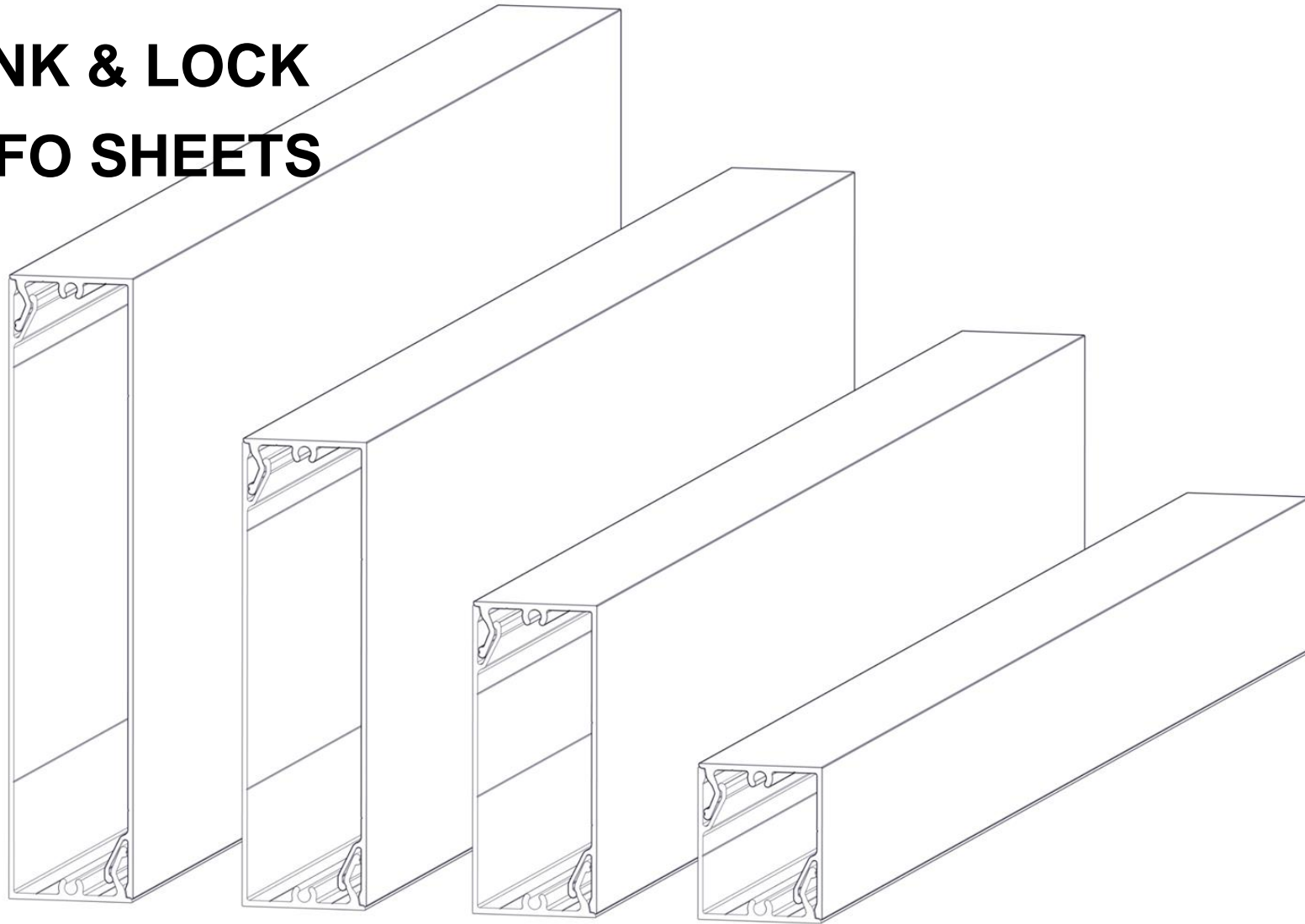


LINK & LOCK INFO SHEETS



L&L DIMENSIONAL

Finishes:

Woodgrains, Solid, Specialty

Custom Solid Color Matching - (Additional lead times apply)



Actual Sizes & Weights

L&L	Width	Depth	Length	Weight(lbs/ft) *per set
2"	2" (50.8mm)	1 5/8" (41.3mm)	24'	0.93
4"	4" (101.6mm)	1 5/8" (41.3mm)	24'	1.3
6"	6" (152.4mm)	1 5/8" (41.3mm)	24'	1.6
8"	8" (203mm)	1 5/8" (41.3mm)	24'	1.9

Key Features:

- Aesthetic look of dimensional lumber
- Ease of install (mount & snap 2 Ls together and end cap)
- Can be installed in batten, fin or end to end orientation
- Easy to clean and no staining needed

Physical data:

- 6063-T5 Extruded Aluminum
- 100% recyclable
- Warranty on Finish: 15 year (standard)/20 year* (ultra) (*10week lead time); Aluminum: 50 year

BIM & CAD:

- RVT & DWG files available, see website for details

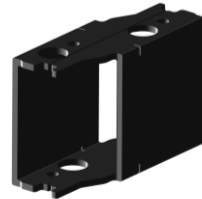
L&L Installation Components

[See L&L Install Guide for details](#)



Mounting Clip:

- Injection Molded PA6 33% Glass with embedded SS washer
- Used on Batten and Fin orientation to secure the back "L" to the substrate
- Included in order with L&L for 6' O.C. attachment
- Additional Clips purchased separately (48 pcs/box)



End Mount:

- Extruded 6063-T5 Aluminum Alloy, powder coated black
- Used for End-to-End attachment to provide a solid mount for the L&L set to wrap around and snap together
- Available for 2", 4', 6" & 8" L&L
- Purchased separately (20 pcs/box)



#12 Fastener (By others):

- Zinc-plated or Stainless Steel
- Used for attaching the back "L" to the substrate
- Use the correct fastener for the required project substrate
- Supplied by others



Internal Stiffener:

- Extruded 6063-T5 Aluminum Alloy (comes powder coated black)
- Used for reinforcing the 4", 6" & 8" L&L to allow for up to 12' spans between attachment points
- See Testing and Loading page for span allowance



1/2" Pilot Point Drill Bit:

- 1/2" Pilot Point Drill Bit
- Used for Drilling out the holes for mounting the L&L to the substrate
- See Install Guide for drilling details



Paint Pen:

- Color choices available
- Used for touch ups at the ends before installing End Caps
- Purchased separately



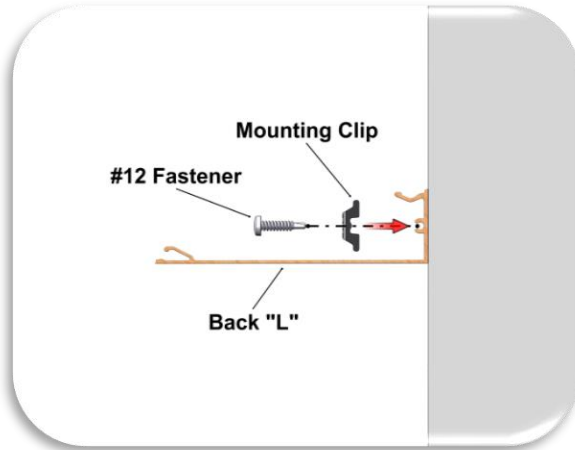
Double-sided Adhesive Tape:

- 3M VHB Tape
- Used for attaching the Internal Stiffener to the back "L" of the L&L set
- Tape is placed in the center of the Stiffener

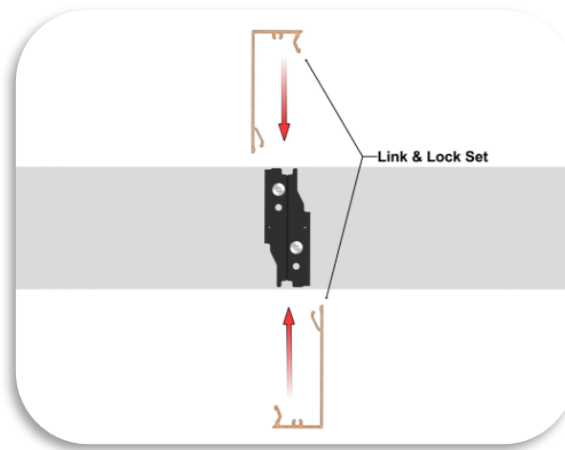
L&L Install Images

[See L&L Install Guide for details](#)

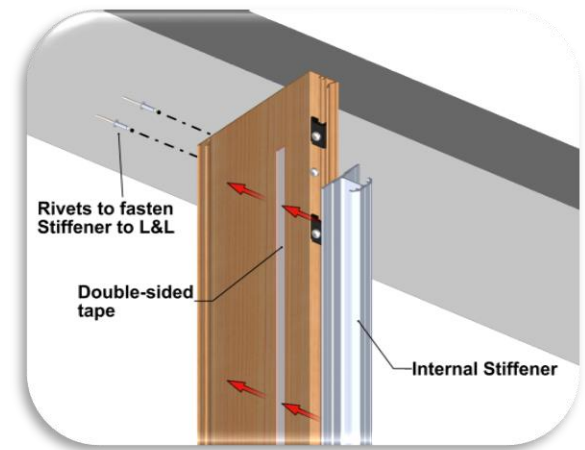
Mounting Clip (Fin orientation)



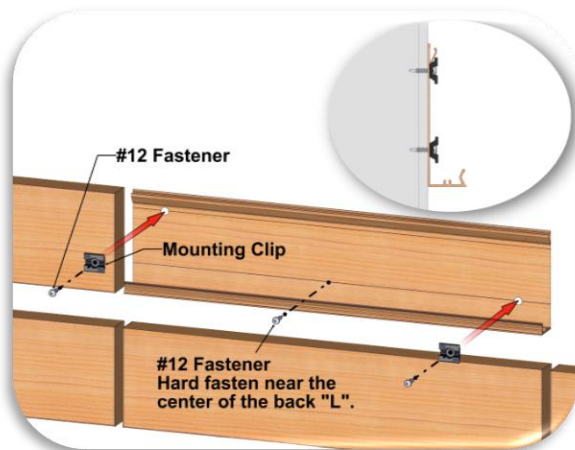
End Mount



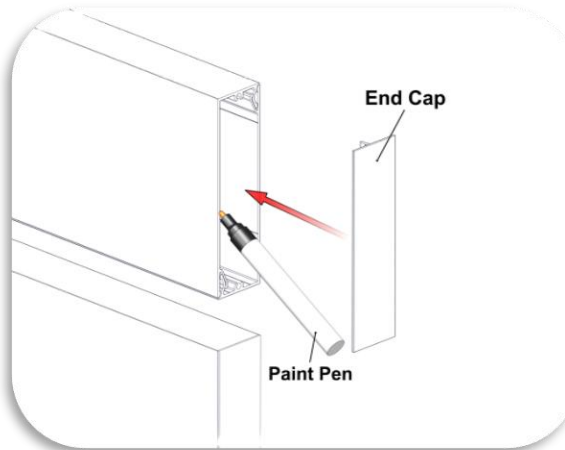
Internal Stiffener (with Double-sided Tape)



Mounting Clip (Batten orientation)



Paint Pen (for cut edges)



Drilling (Fin orientation)



L&L Testing Data and Allowable Spans

LONGBOARD®
ARCHITECTURAL PRODUCTS

2" LINK & LOCK		PSF (FACTORED/ULTIMATE)										
		30	40	50	60	70	80	90	100	110	120	
ALLOWABLE SPAN (ft)	4'	[Green]										
	6'	[Green]										
	8'	[Green]										
	10'	[Green]										

All testing has been performed using L/180 deflection limits

LONGBOARD®
ARCHITECTURAL PRODUCTS

4" LINK & LOCK		PSF (FACTORED/ULTIMATE)										
		30	40	50	60	70	80	90	100	110	120	
ALLOWABLE SPAN (ft)	2'	[Green]										
	4'	[Green]										
	6'	[Green]										
	8'	[Green]										

All testing has been performed using L/180 deflection limits

LONGBOARD®
ARCHITECTURAL PRODUCTS

6" LINK & LOCK		PSF (FACTORED/ULTIMATE)									
		30	40	50	60	70	80	90	100	110	120
ALLOWABLE SPAN (ft)	2'	[Green]									
	4'	[Green]									
	6'	[Green]									

All testing has been performed using L/180 deflection limits

LONGBOARD®
ARCHITECTURAL PRODUCTS

8" LINK & LOCK		PSF (FACTORED/ULTIMATE)										
		30	40	50	60	70	80	90	100	110	120	
ALLOWABLE SPAN (ft)	2'	[Green]										
	4'	[Green]										
	6'	[Green]										

All testing has been performed using L/180 deflection limits


Testing:


ICC-ES Evaluation Report - Division: 05 00 00 – METALS

- Section: 05 50 00 - Metal Fabrications

LARR - Los Angeles Department of Building Safety (LADBS) accepts ICC-ES reports as proof of compliance

International Building Code (IBC). International Residential Code (IRC)
California Building Code (CBC), California Residential Code (CRC)
City of Los Angeles Building Code (LABC)
City of Los Angeles Residential Code (LARC)
Florida Building Code – Building, Florida Building Code - Residential

 Fire Rating: Class A Non-Combustible by ASTM E136 & ASTM E84

 Light Reflectance: 5% (Black) up to 73.2% (Ultra White)

L&L Allowable Spans with Stiffener

LONGBOARD®
ARCHITECTURAL PRODUCTS

4" LINK & LOCK W. STIFFENER		PSF (FACTORED/ULTIMATE)																		
		30	40	50	60	70	80	90	100	110	120									
ALLOWABLE SPAN (ft)	**4'	✓	✓	✓	✓	✓	✓	✓	✓	✓	✓	✓	✓	✓	✓	✓	✓	✓	✓	✓
	**6'	✓	✓	✓	✓	✓	✓	✓	✓	✓	✓	✓	✓	✓	✓	✓	✓	✓	✓	✓
	**8'	✓	✓	✓	✓	✓	✓	✓	✓	✓	✓	✓	✓	✓	✓	✓	✓	✓	✓	✓
	**10'	✓	✓	✓	✓	✓	✓	✓	✓	✓	✓	✓	✓	✓	✓	✓	✓	✓	✓	✓
	**12'	✓	✓	✓	✓	✓	✓	✓	✓	✓	✓	✓	✓	✓	✓	✓	✓	✓	✓	✓

All testing has been performed using L/180 deflection limits
 **Using Longboard Link & Lock Internal Stiffener

LONGBOARD®
ARCHITECTURAL PRODUCTS

6" LINK & LOCK W. STIFFENER		PSF (FACTORED/ULTIMATE)																		
		30	40	50	60	70	80	90	100	110	120									
ALLOWABLE SPAN (ft)	**4'	✓	✓	✓	✓	✓	✓	✓	✓	✓	✓	✓	✓	✓	✓	✓	✓	✓	✓	✓
	**6'	✓	✓	✓	✓	✓	✓	✓	✓	✓	✓	✓	✓	✓	✓	✓	✓	✓	✓	✓
	**8'	✓	✓	✓	✓	✓	✓	✓	✓	✓	✓	✓	✓	✓	✓	✓	✓	✓	✓	✓
	**10'	✓	✓	✓	✓	✓	✓	✓	✓	✓	✓	✓	✓	✓	✓	✓	✓	✓	✓	✓

All testing has been performed using L/180 deflection limits
 **Using Longboard Link & Lock Internal Stiffener

LONGBOARD®
ARCHITECTURAL PRODUCTS

8" LINK & LOCK W. STIFFENER		PSF (FACTORED/ULTIMATE)																		
		30	40	50	60	70	80	90	100	110	120									
ALLOWABLE SPAN (ft)	**2'	✓	✓	✓	✓	✓	✓	✓	✓	✓	✓	✓	✓	✓	✓	✓	✓	✓	✓	✓
	**4'	✓	✓	✓	✓	✓	✓	✓	✓	✓	✓	✓	✓	✓	✓	✓	✓	✓	✓	✓
	**6'	✓	✓	✓	✓	✓	✓	✓	✓	✓	✓	✓	✓	✓	✓	✓	✓	✓	✓	✓
	**8'	✓	✓	✓	✓	✓	✓	✓	✓	✓	✓	✓	✓	✓	✓	✓	✓	✓	✓	✓

All testing has been performed using L/180 deflection limits
 **Using Longboard Link & Lock Internal Stiffener