



INSPIRING ARCHITECTURE

Bold. Innovative. Sustainable.

Change the face of
ARCHITECTURE™

We believe inspiring architecture is a powerful force that positively impacts people and communities.

Incorporating our sustainable products into exhilarating architectural designs has a positive impact on the world.

Project: Humber College Barrett Centre for Technology Innovation

Architect: Perkins & Will

Product: 6" V Groove - Light Oak

Location: Etobicoke, Toronto, ON

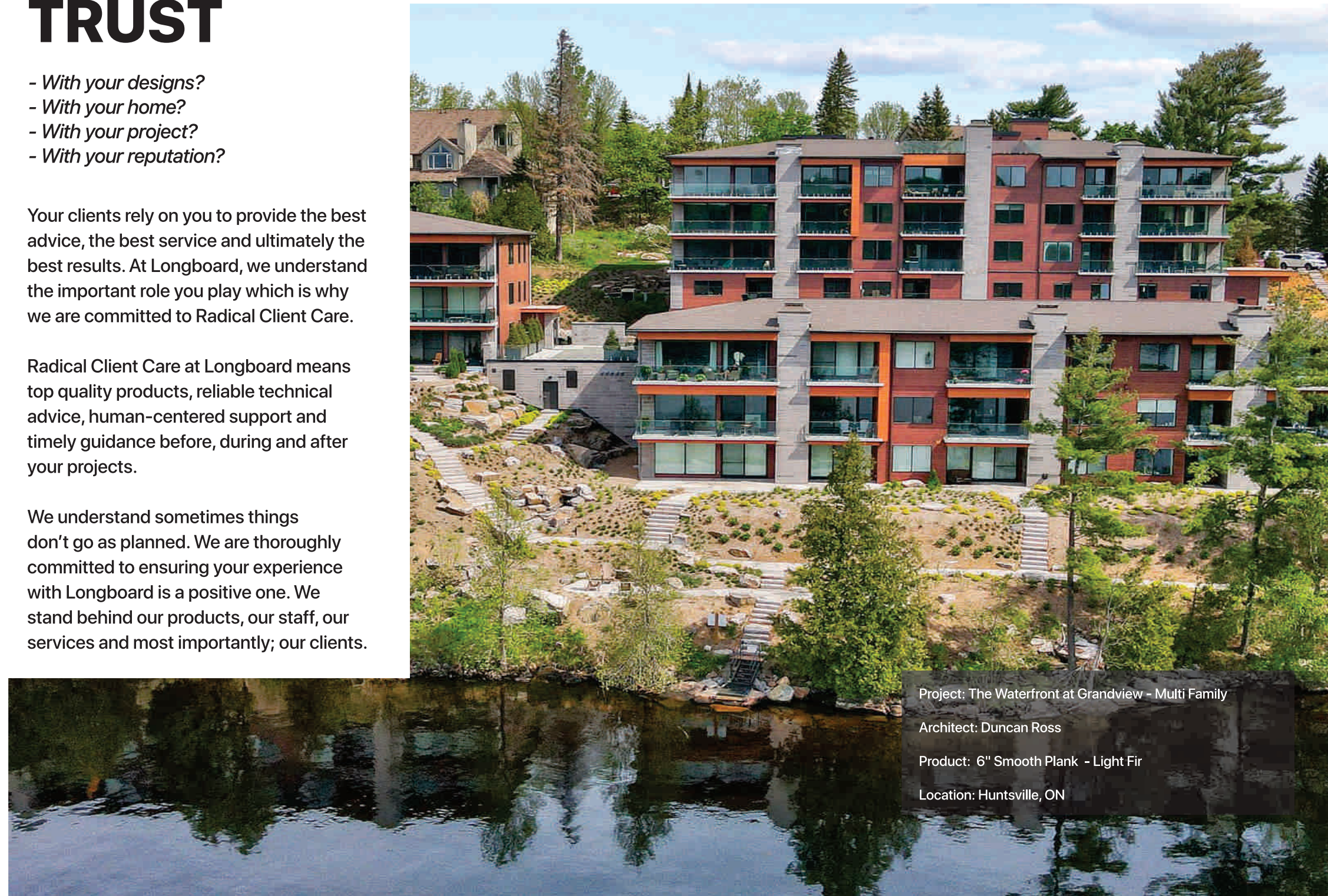
WHO DO YOU TRUST

- With your designs?
- With your home?
- With your project?
- With your reputation?

Your clients rely on you to provide the best advice, the best service and ultimately the best results. At Longboard, we understand the important role you play which is why we are committed to Radical Client Care.

Radical Client Care at Longboard means top quality products, reliable technical advice, human-centered support and timely guidance before, during and after your projects.

We understand sometimes things don't go as planned. We are thoroughly committed to ensuring your experience with Longboard is a positive one. We stand behind our products, our staff, our services and most importantly; our clients.



Project: The Waterfront at Grandview - Multi Family
Architect: Duncan Ross
Product: 6" Smooth Plank - Light Fir
Location: Huntsville, ON



Project: Uptown Apartments at Kirkland Urban

Architect: Weber Thompson Architects

Product: 6" V Groove- Light Cherry

Location: Kirkland, WA



FAQ

- Longboard is made from single-sourced extruded aluminum
- All aluminum is extruded in-house in our manufacturing plant located in British Columbia, Canada
- Products available for order in 12 or 24ft lengths
- 3-6 Business Day Production Lead Time
- Longboard products are safe for both interior and exterior use
- Custom Color matching is available upon request
- Tongue & Groove material can be installed both vertically, and horizontally
- 15-20 year warranty options
- AAMA 2604/2605 certified powder coating facility
- Class A Fire Rating
- 40+ On-Demand Finish Options

Exterior Spaces

All of our exterior products and systems are powder coated with AAMA 2604/2605 certified powder. This means that you are ensured to have high quality material that will hold up against the exterior elements, including corrosion and UV rays. All Longboard materials are created in-house, starting from the aluminum extrusion and ending with the finishing touches, packaging and shipping to site. Explore our different systems and contact us with any questions you have.

- AAMA 2605 Certified Facility
- 100% Extruded Aluminum
- Non-Combustible
- Weather-Resistant
- Maintenance-Free
- Over 40 available finishes
- 100% Recyclable
- Earn LEED Credits
- 3-6 Business Days
- Radical Client Care
- VOC Free



Project: Northern Lakes College

Architect: MANASC ISAAC Architects

Product: 4" Link & Lock - Birchwood

Location: High Prairie, AB

Cladding



Project: The Vicinity Apartments

Architect: Sherman Associates

Product: 6" V Groove- Light Cherry

Location: Minneapolis, MN

Soffit

Project: Union Community Health Connection

Architect: Tillmann Ruth Robinson inc.

Product: 6" V Groove- Light National Walnut & Anodic Ice

Location: Tulsa, OK



Panelboard™



Project: Education

Architect: X Architecture

Product: 6" Smooth Planks - Bone White, Moonstone & Medium Blue

Location: Vancouver, BC

Privacy Screens

Project: Cooling Tower Screen

Architect: E.Yohanon

Product: 1 x 3", 1 x 5" Privacy Beams - Dark National Walnut, Dark Fir

Location: New York, NY



Endura

Ceiling System

Interior

Spaces

All of our exterior products and systems are powder coated with AAMA 2604/2605 certified powder. This means that you are ensured to have high quality material that will hold up against the exterior elements, including corrosion and UV rays. All Longboard materials are created in-house, starting from the aluminum extrusion and ending with the finishing touches, packaging and shipping to site. Explore our different systems and contact us with any questions you have.

- AAMA 2605 Certified Facility
- 100% Extruded Aluminum
- Non-Combustible
- Weather-Resistant
- Maintenance-Free
- Over 40 available finishes
- 100% Recyclable
- Earn LEED Credits
- 3-6 Business Days
- Radical Client Care
- VOC Free

Project: Phantom Creek Winery

Architect: Gallagher Bros.

Product: 6" V Groove - Dark Antique Oak

Location: Oliver, BC

Intrepid

Ceiling System

with **LINK & LOCK™**
battens

Project: Aurora

Architect: GMC Architects / Bruce Mau Design

Product: 6" Link & Lock™ - Bone White

Location: Edmonton, BC

Dauntless

Ceiling System



Project: Equinox

Architect: Montalba Architects

Product: 6 " Dauntless Beams - Sand Drift

Location: Vancouver, BC

Privacy Beams



Winner of the 2022 Ceilings and Interior
Systems Construction Association
Construction Excellence Gold Award

Project: LB Entrance

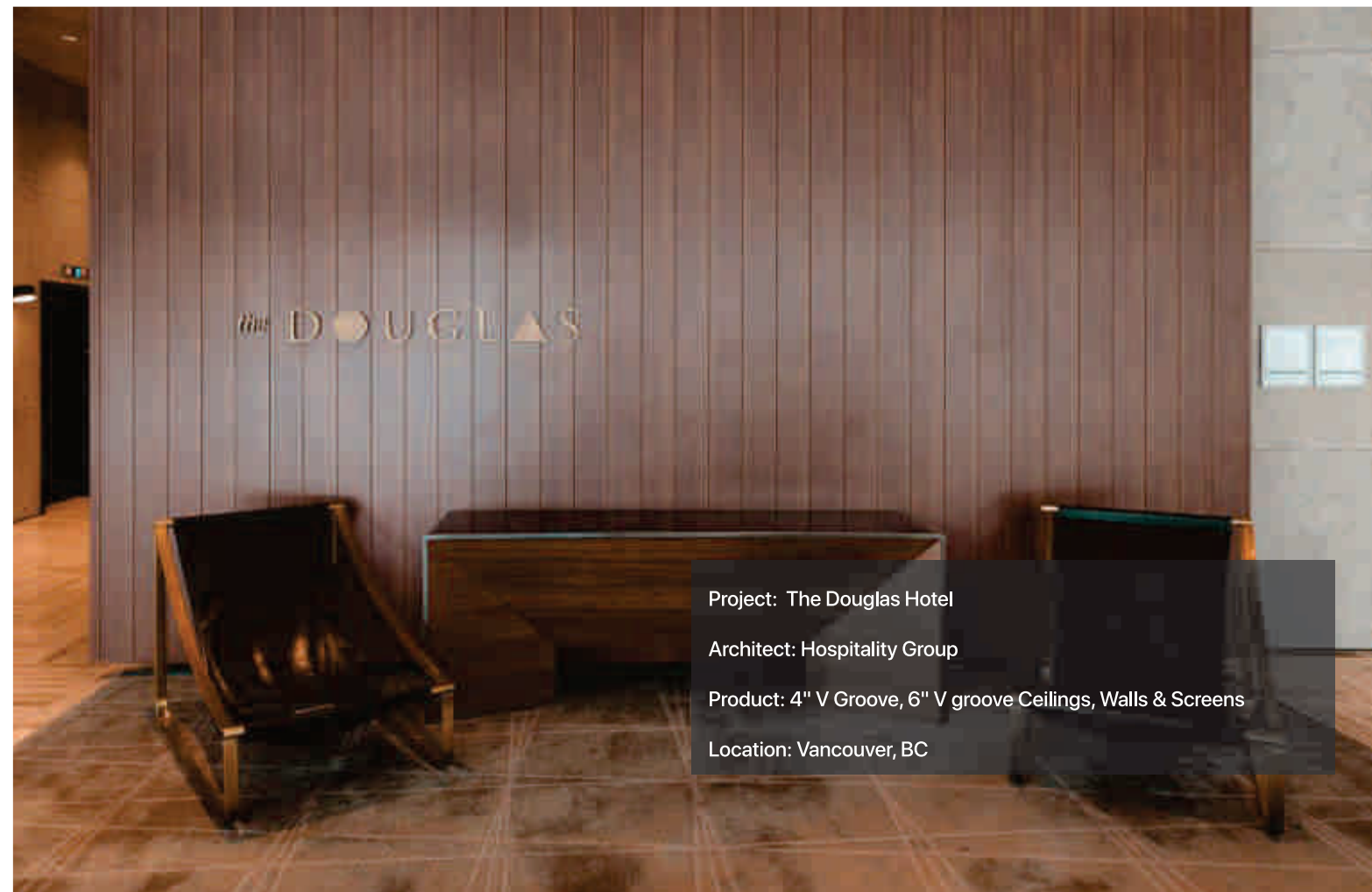
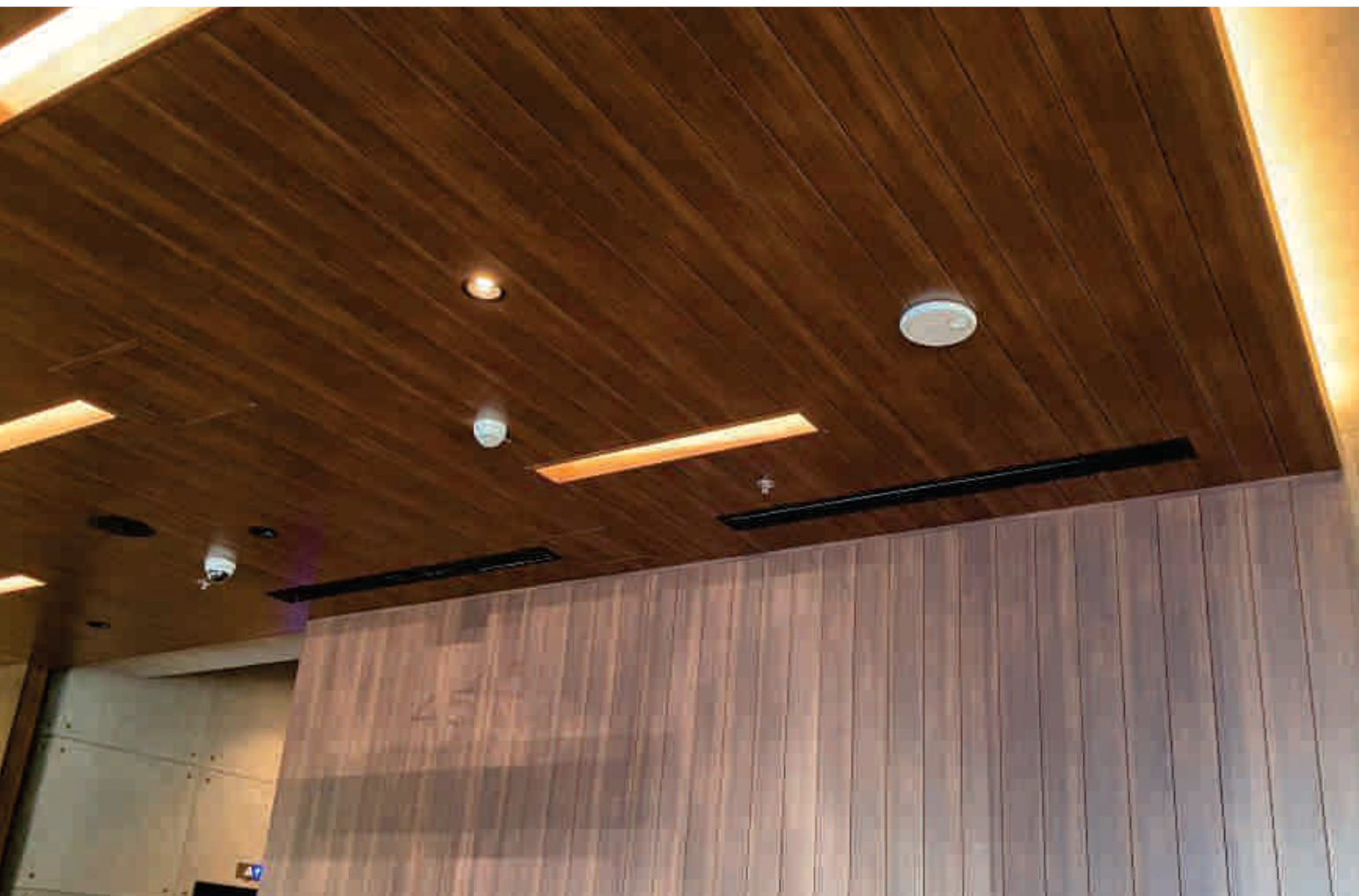
Architect: X Architecture

Product: 1 x 3" Privacy Beams - Sand Drift

Location: Abbotsford, BC

Interior

Ceilings, Walls, Screens



Project: The Douglas Hotel
Architect: Hospitality Group
Product: 4" V Groove, 6" V groove Ceilings, Walls & Screens
Location: Vancouver, BC

LEED

Platinum & Net Zero



Project: Humber College Barrett Centre for Technology Innovation

Architect: Perkins & Will

Product: 6" V Groove - Light Oak

Location: Etobicoke, Toronto, ON

We are building a sustainable future.

RAINA
RAINSCREEN ASSOCIATION
IN NORTH AMERICA



cool, temperate climate



CERTIFIED COMPONENT
Passive House Institute

All Longboard products are 100% recyclable, VOC and LBC red list free, made using a chrome-free pretreatment, manufactured using hydro-electric power, and can help earn LEED credits.

We provide architects, designers, and builders a sustainable option in reducing embodied carbon, supports LEED certification, and makes achieving net-zero emissions attainable.

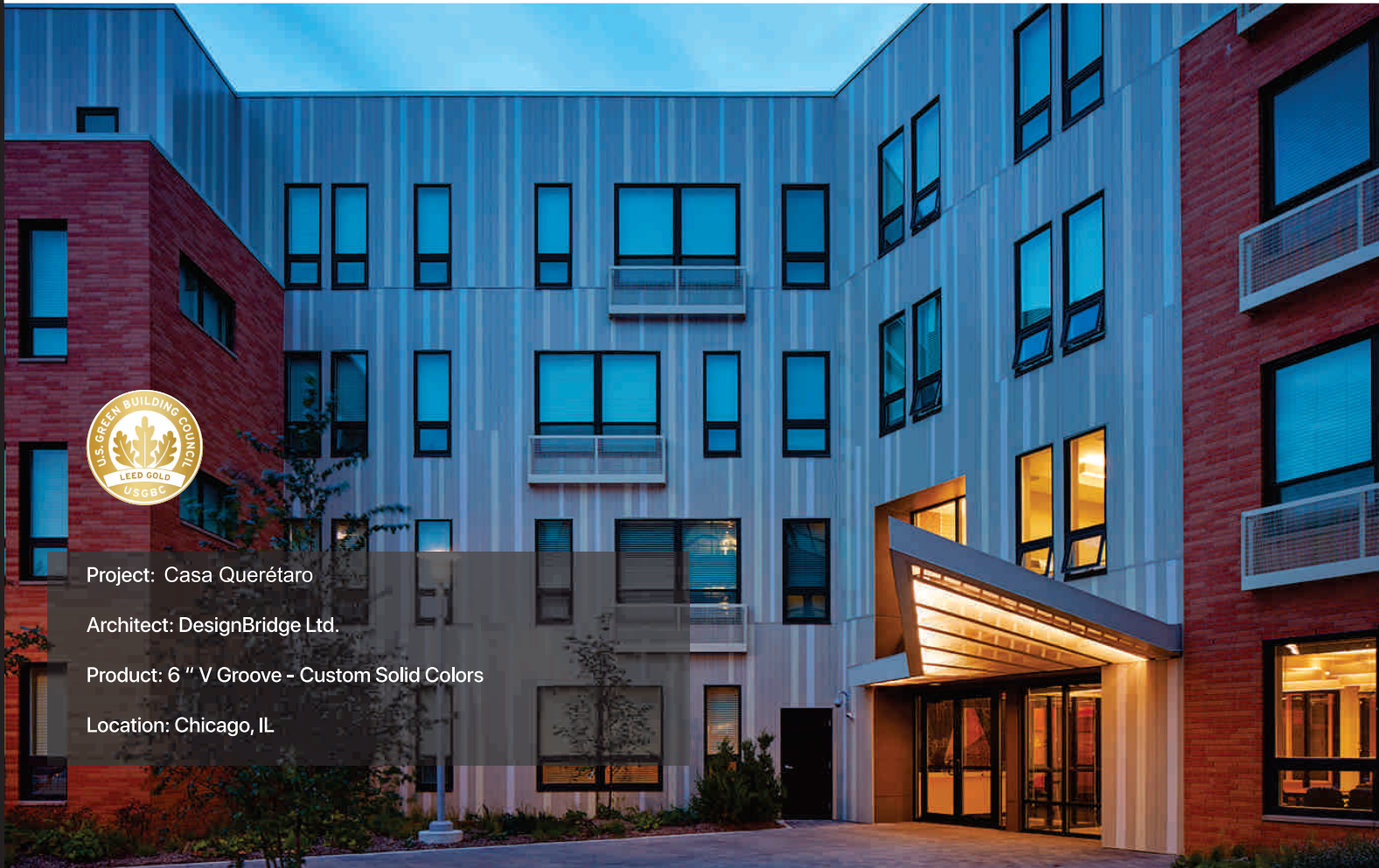
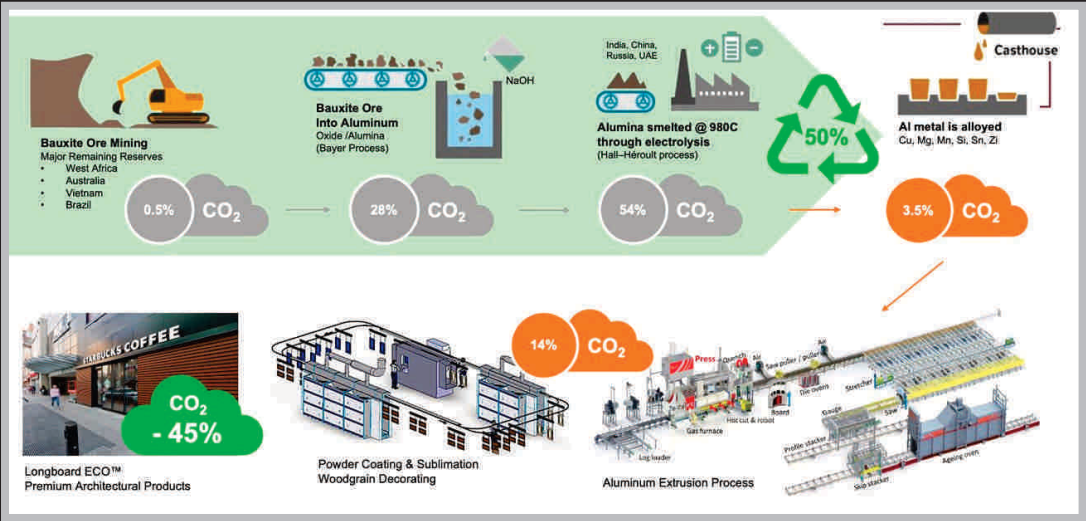
Our water filtration system ensures that any water used in the manufacturing and pretreatment process is returned clean to the environment.



LONGBOARD **ECO**

Our Longboard ECO™ suite of products contain at least 50% recycled aluminum. Manufacturing these products results in less greenhouse gas emissions and generates less than 50% of industry average embodied carbon.

These products meet the same strict quality benchmarks as our standard line of products, are offered with the same robust warranties, and possess verified life cycle impact analysis (LCIA) and environmental product declarations (EPD).



Testing & Certification

Project: The Commons at Ballard

Architect: Studio Meng Strazzara

Product: 6 " V Groove - Dark Cherry, Dark National Walnut, Light Fir

Location: Seattle, WA



NRC Acoustical testing

Typical testing measuring a products sound absorption qualities.

ICC ESR

Document for compliance of code approvals and testing certifications.

Flame spread

Products are tested to meet or exceed ASTM E2768-11 and ASTM E84 and achieve class 1 fire ratings

EXAP report

Extended application report showing compliance of similar product lines.

Florida Product Code

FL 41934, FL 41776, FL 41842

MIAMI Dade

NOA No. 22-0209.01
Exp. Date: January 26, 2028.

Combustibility

Products are tested to meet or exceed CAN/ULC S114 / ASTM E136 non-combustibility standards.

EK/EU Fire rating

Products are tested to meet or exceed EN 13501-1 standards to achieve class A2-S1, D0 fire ratings.

BS EN ISO 1716

Specifies a method for the determination of the gross heat of combustion of products.

AAMA 509-9

Certified rainscreen V2/W1

Wildland-Urban Interface

WUI, California

EPD

Product Specific EPD's available

Design Assist

As a building product manufacturer with its own in-house engineering and product design team, that owns its entire manufacturing process and that also understands building sciences, it truly makes us the design assist partner of choice. We can offer various custom solutions ranging from custom aluminum extrusions, unique powder coating finishes, value added processing using our CNC metal fabrication capabilities, prefabrication, and modular design solutions

Project: Makers Mark Distillery

Architect: Morris Workshop

Product: 6 " V Groove Custom Facade - Dark Brown, Classic Bronze, Slate Grey, Black

Location: Loretta, KY

Change the face of
ARCHITECTURE™

- Early Communication and Design Support
- Technical Support
- Custom Finish Matching
- Opportunity for Custom Profiles
- Product Innovation Team
- Shop Drawings & Material Estimates

Contact us to learn more about our
premium architectural solutions.



Head office 120-1777 Clearbrook Road
Abbotsford, BC, Canada V2T 5X5

Toll free 1 800 604 0343

Email info@longboardproducts.com

Web longboardproducts.com