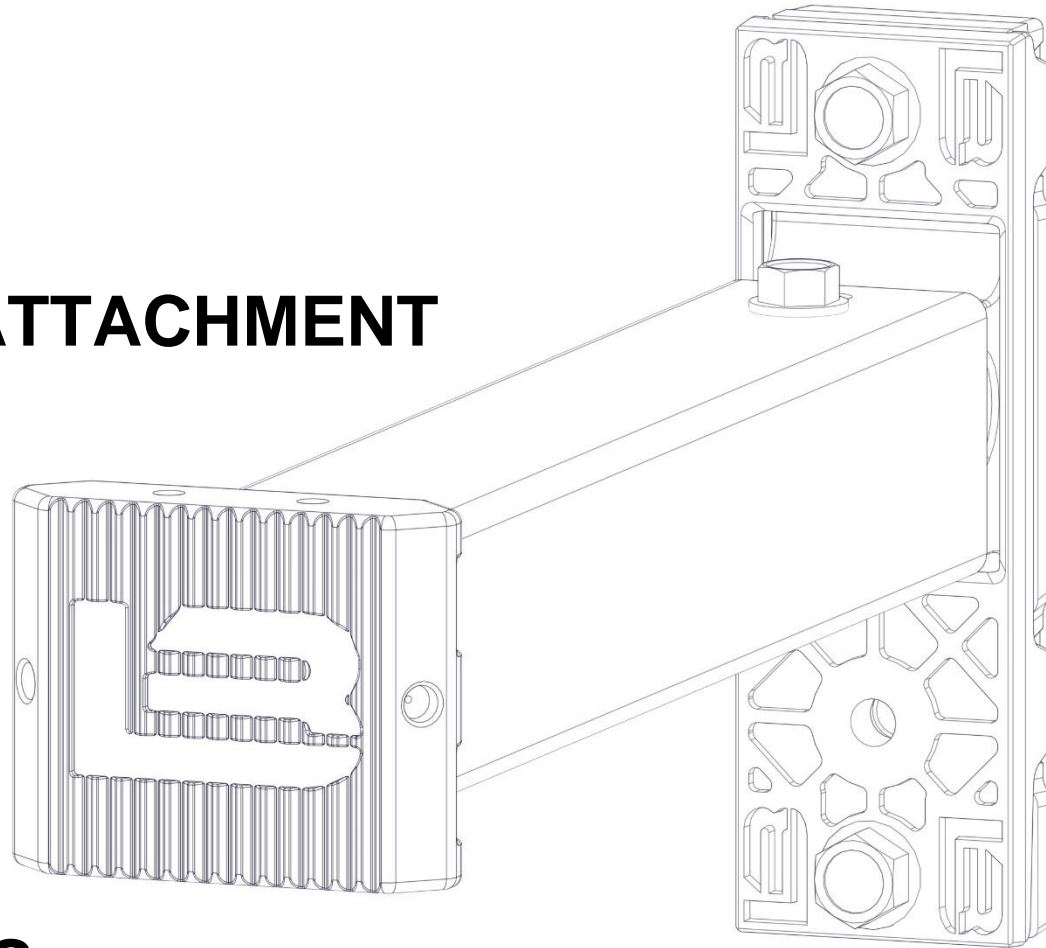


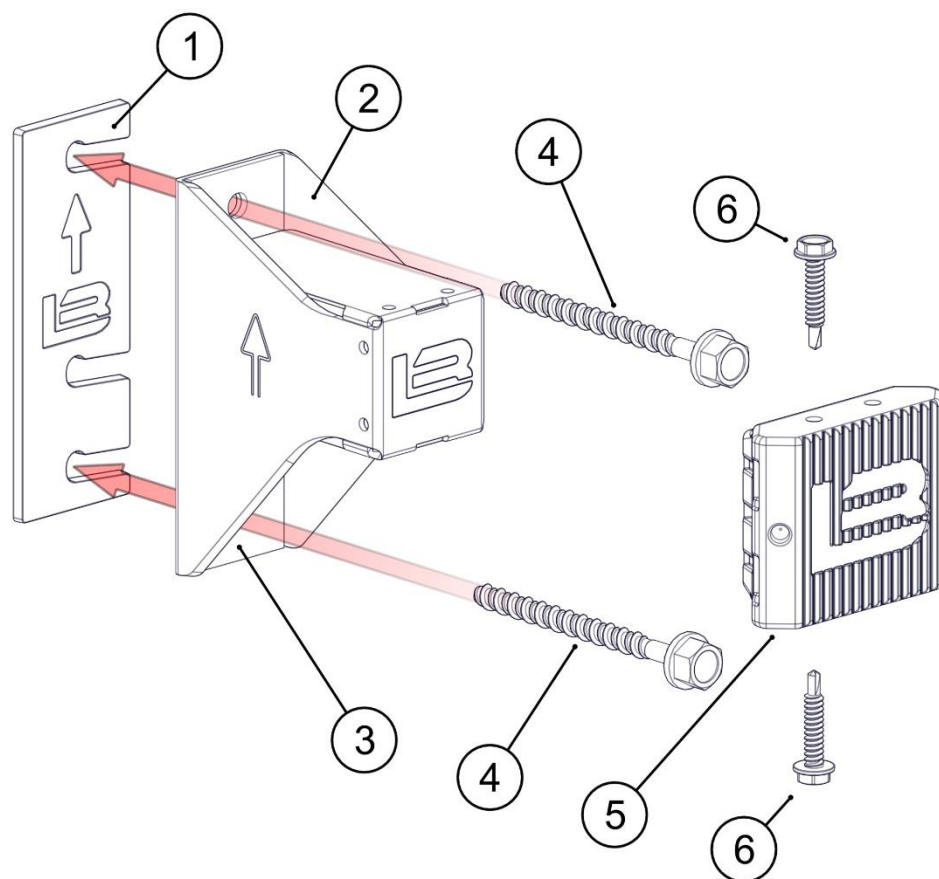
# **HITCH™**

## **CLADDING ATTACHMENT SYSTEM**

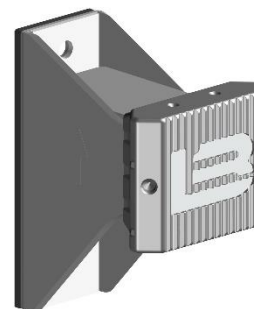


**INFO SHEETS**

# HITCH™ SD



No.	Description	Material	Qty
1	SD Thermal Base Shim	PA6 33% Glass	1
2	SD Clip Base	304 Stainless Steel - 16ga wall	1
3	SD Washer Plate	304 Stainless Steel	1
4	#14 Fastener	By others	2
5	Thermal Cap	Injection Molded PA6 33% Glass	1
6	#10 x 1" Self Drilling Hex Head Screw	410 Stainless Steel	2



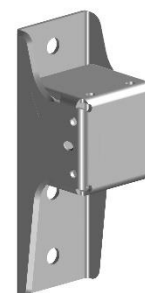
## ★ Key Features:

Deadload Capacity  
6 - 7.5 psf

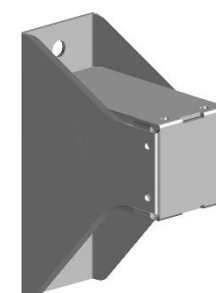
@35 psf wind load  
(factored/ultimate)  
Assuming a clip spacing  
of 32" x 48"

Adjustable using 1/8"  
SD Thermal Base Shims  
-3 max (3/8")

Up to 94% thermal  
efficiency



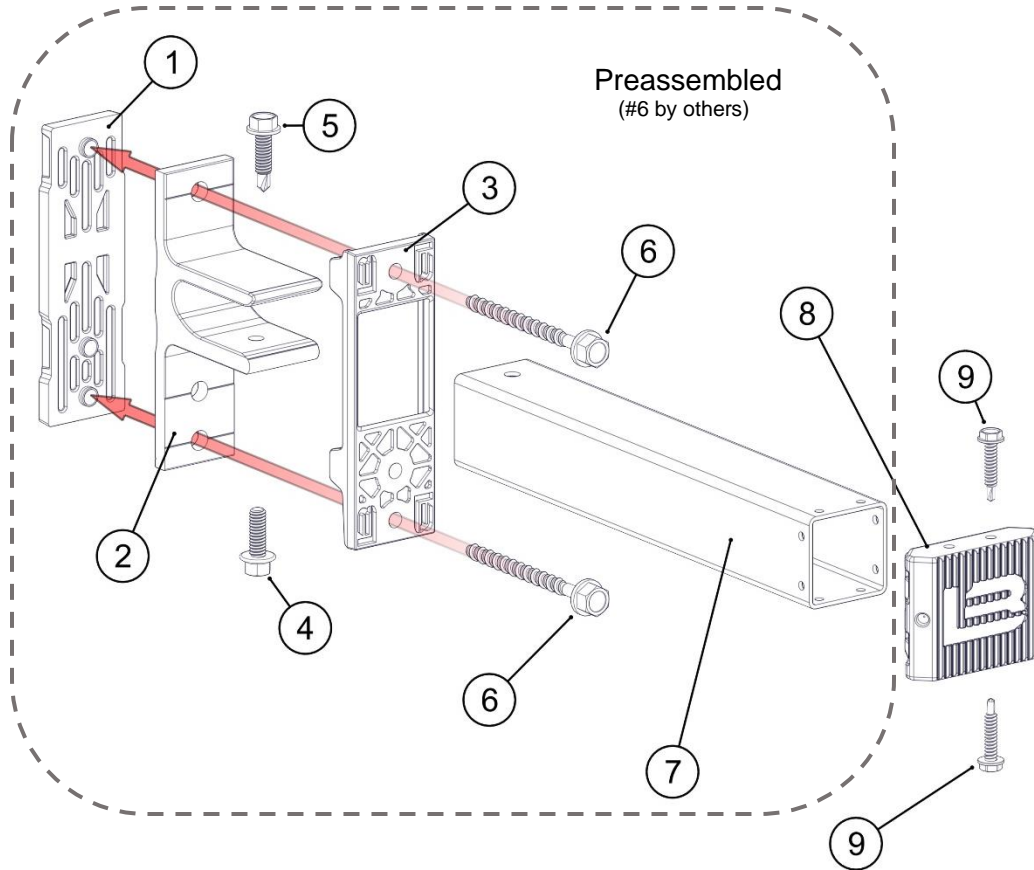
**SD Clip Base**  
1" Insulation



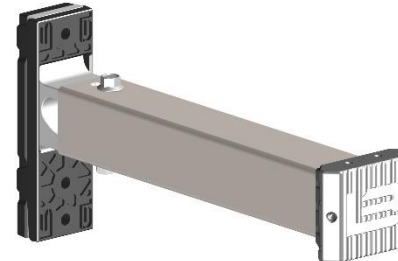
**SD Clip Base**  
2 1/2" Insulation

1 1/2" & 2"  
also available.

# HITCH™ HD & HD+

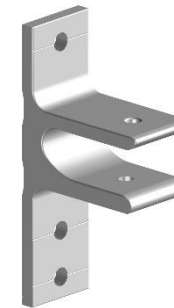


No.	Description	Material	Qty
1	HD Thermal Base	Injection Molded PA6 33% Glass	1
2	HD Clip Base	Extruded 6063 Aluminum Alloy	1
3	HD Thermal Base Cap	Injection Molded PA6 33% Glass	1
4	1/4" -20 Hex Head Screw	Stainless Steel	1
5	1/4" -20 Self-Drilling Hex Head Screw	Stainless Steel	1
6	#14 Fastener	By others	2
7	HD Post Arm	304 Stainless Steel - 16ga wall	1
8	Thermal Cap	Injection Molded PA6 33% Glass	1
9	#10 x 1" Self Drilling Hex Head Screw	410 Stainless Steel	2



## ★ Key Features:

- 1" Telescopic adjustability
- Lengths available in 1/2" increments
- Up to 94% thermal efficiency



**HD** Clip Base  
3" - 16" Insulation

Deadload Capacity  
3" - 16.5 psf  
16" - 3.5 psf

@35 psf wind load  
(factored/ultimate)  
Assuming a clip spacing  
of 32" x 48"



**HD+** Clip Base  
6" - 16" Insulation

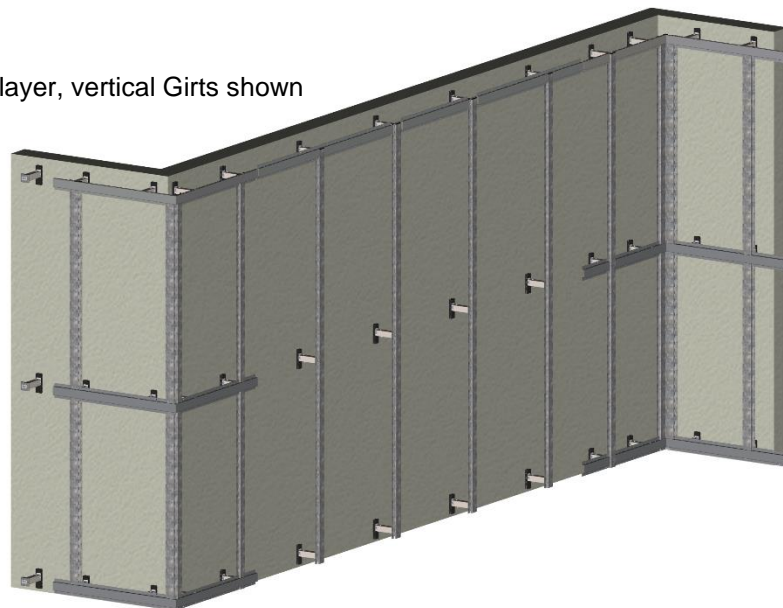
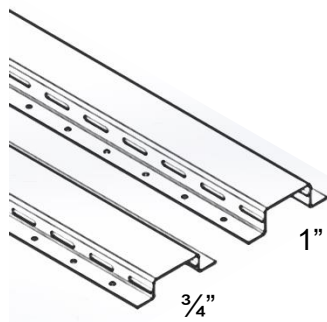
Deadload Capacity  
6" - 14 psf  
16" - 9.5 psf

@35 psf wind load  
(factored/ultimate)  
Assuming a clip spacing  
of 32" x 48"

# HITCH™ GIRTS

Single layer, vertical Girts shown

**Hitch Girts** and accessories are manufactured from 16-gauge roll formed steel with a protective galvalume coating to protect it from corrosion. The shape of the Girts is that of a “hat track” and are pre-punched for ease of installation. Hitch Girts are offered in depths of  $\frac{3}{4}$ ” and 1” to accommodate structural performance requirements.



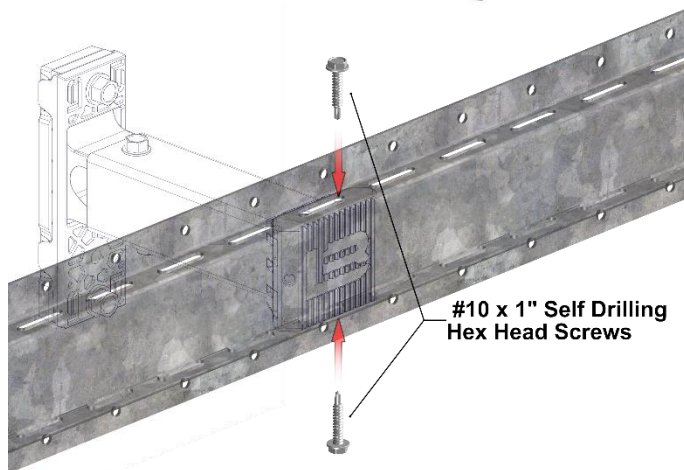
$\frac{3}{4}$ ” Girt

**Standard Girts** are used in horizontal and vertical applications.

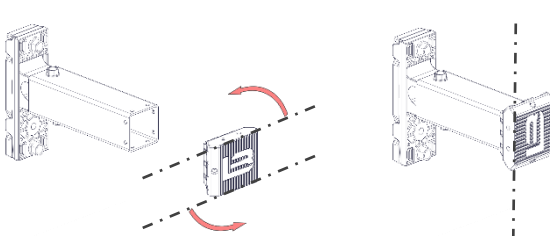


Corner Girt

**Corner Girts** are used around inside and outside corners. They are bent onsite to achieve the required angle.



#10 x 1" Self Drilling Hex Head Screws

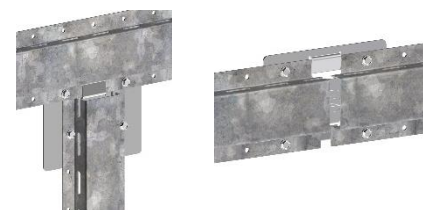


Rotate Thermal Cap 90° to change Girt orientation.



Edge Girt

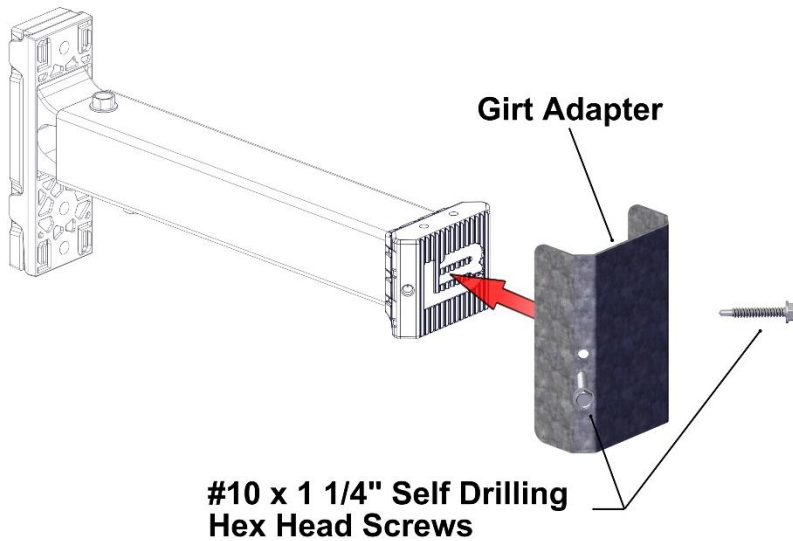
**Edge Girts** are used to support cladding components at the edge of application where required.



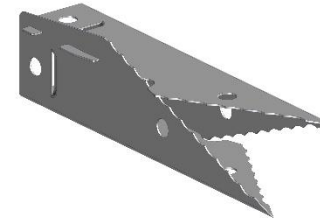
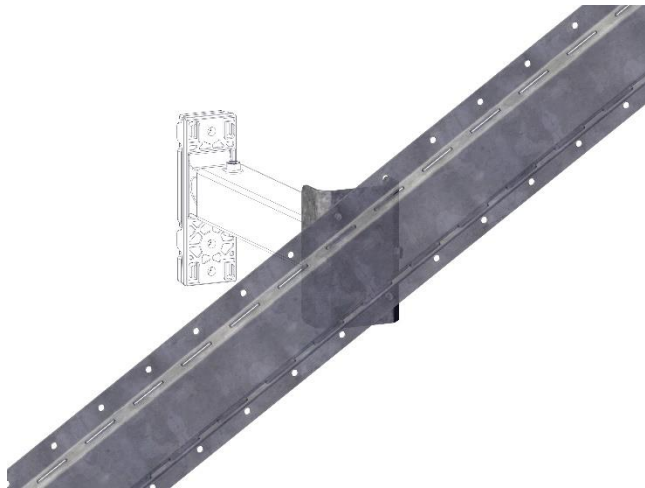
Girt Connector

**Girt Connectors** are used to connect Girts perpendicular and end to end. They are used to connect Standard Girts, Edge Girts and Corner Girts.

# Girt Accessories



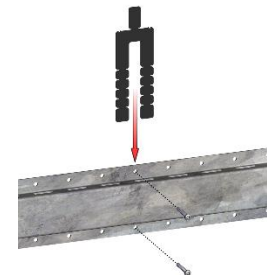
The **Girt Adapter** is an accessory to the Hitch system to be used when 3<sup>rd</sup> party Girts/Rails are specified. It allows a surface for mounting at any angle. The Girt Adapter can also be rotated.



**Piercing Tool** is used to cut the insulation at the required location for a high-quality exterior insulation install.



**Plunger Tool** is used to support the insulation install for HD/HD+ by pressing the cut insulation into the Hitch Clip Post Arm. the required location for a high-quality exterior insulation install.



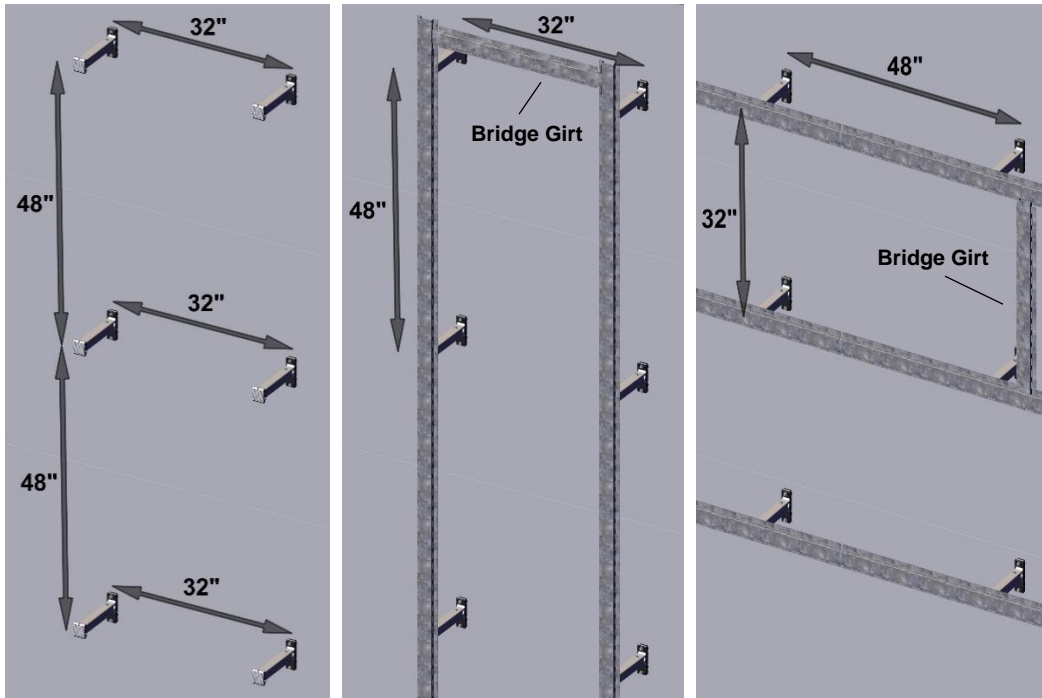
**U-Shim** is used when installing Girts directly to substrate. It is installed between the Girts and the substrate to allow for water run-off.

# Substructure Design Options

HITCH CLIP SPACING CONSISTENT, TO MAINTAIN THERMAL EFFICIENCY

## SINGLE LAYER GIRTS

**WIND LOAD <40 PSF** using Longboard Planks



Typical Hitch Clip  
Layout 32" x 48"

Horizontal Cladding  
Install

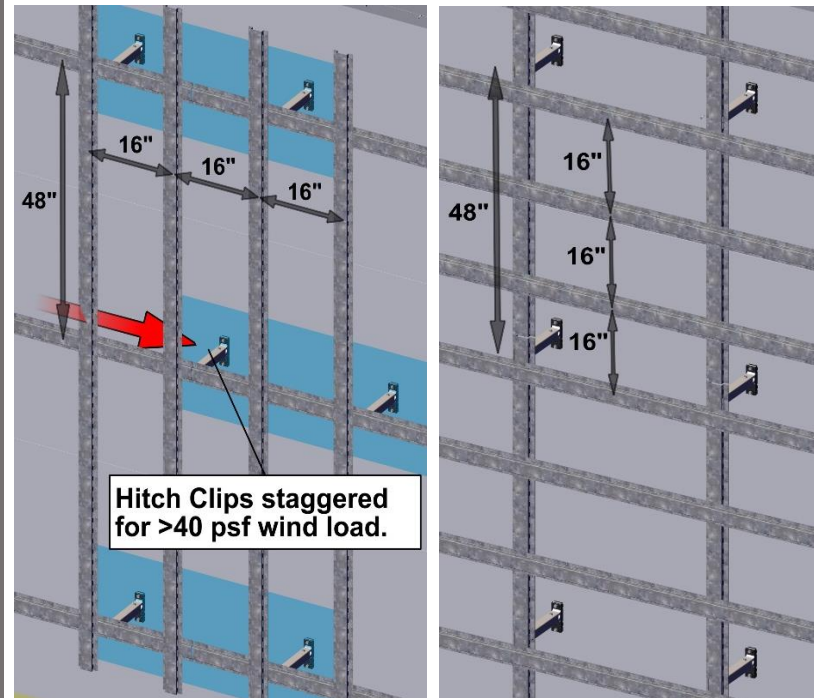
Girts Installed  
Vertically

Vertical Cladding  
Install

Girts Installed  
Horizontally

## DUAL LAYER GIRTS

**WIND LOAD >40 PSF** using Longboard Planks



Horizontal Cladding  
Install

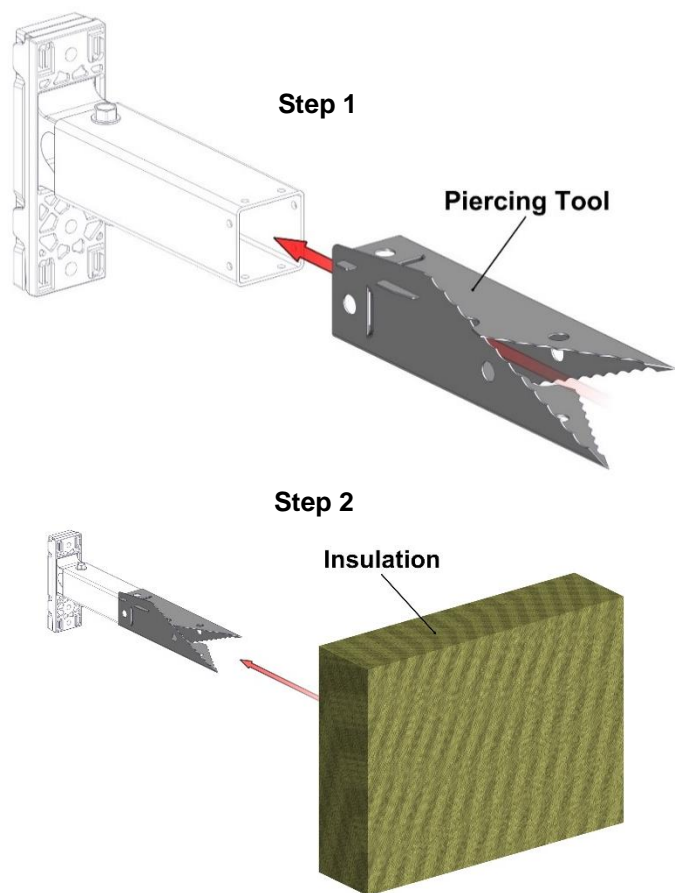
Second Layer Girts  
Installed Vertically

Vertical Cladding  
Install

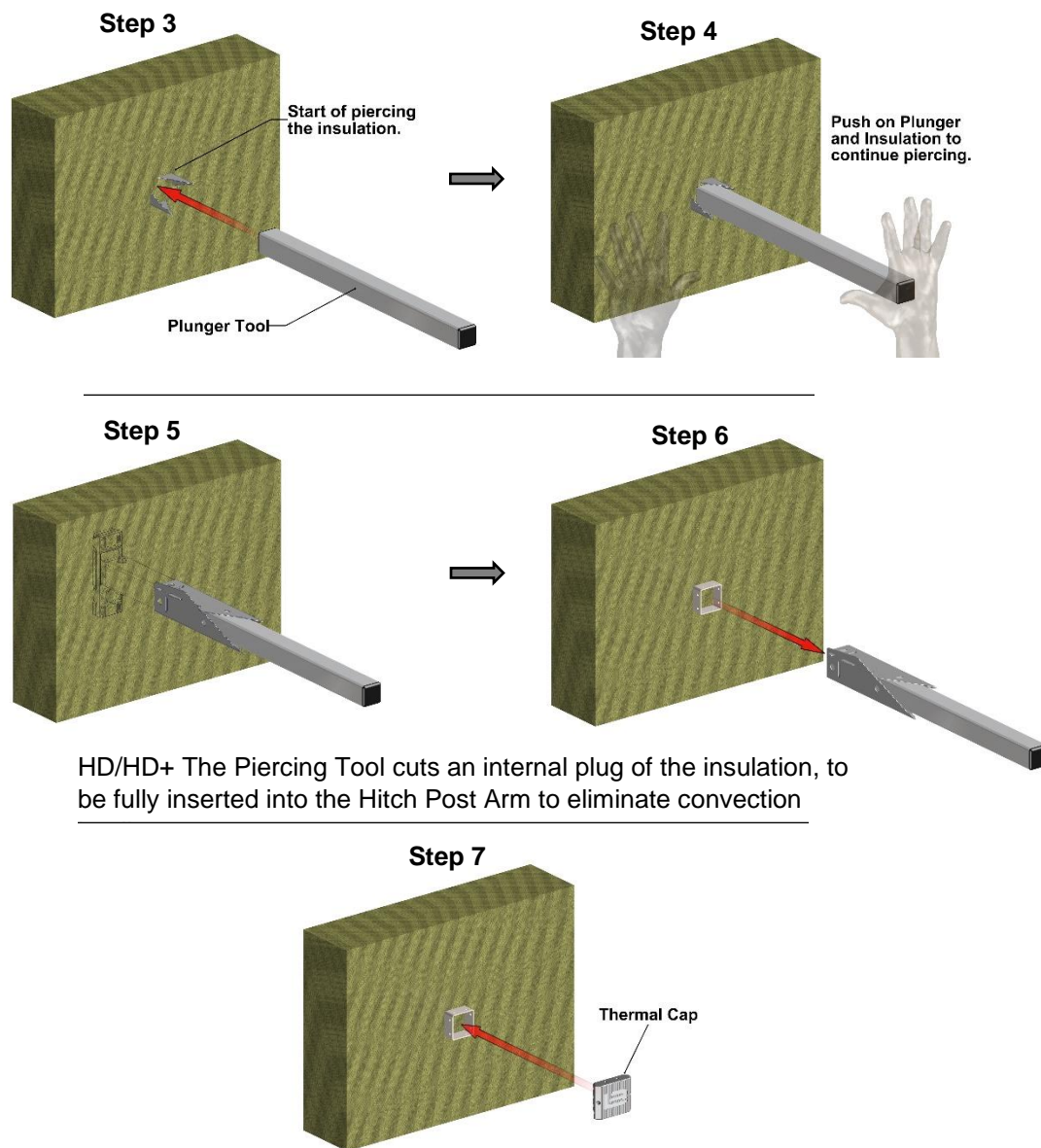
Second Layer Girts  
Installed Horizontally

# Hitch Piercing Technology

The Hitch system uses a proprietary Piercing Tool accessory that gets used during installation to pierce through various insulation types including Mineral Wool, Poly ISO, EPS, XPS and Fiberglass. The piercing technology enables a unique installation sequence which makes for a more productive and higher quality exterior insulation install. The result is a clean-cut insulation edge and a snug fit around and inside the Hitch Clip Post Arm. This process supports a high-quality installation with minimal air gaps and a true continuous layer of insulation.



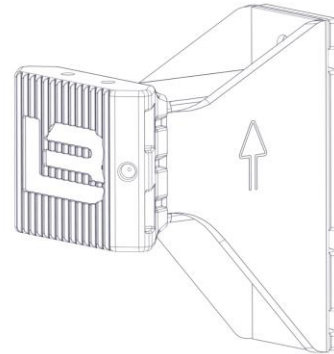
## Piercing Sequence



HD/HD+ The Piercing Tool cuts an internal plug of the insulation, to be fully inserted into the Hitch Post Arm to eliminate convection

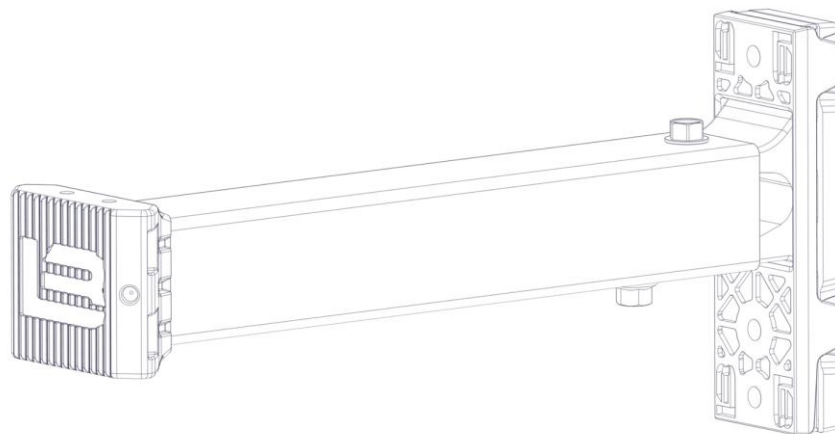
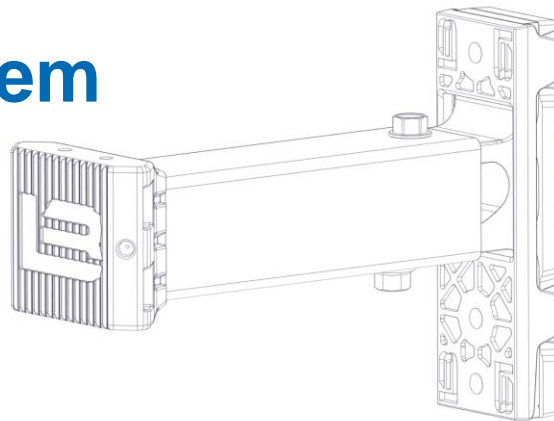


**LONGBOARD®**  
INSPIRING ARCHITECTURE



# Hitch™ Cladding Attachment System

Installation Guidelines



## Table of Contents

<b>Material Specifications</b>	<b>3</b>
Thermal Performance	3
Structural Performance	3
Material ordering and deliveries	3
Storage and handling	3
Warranty	3
<b>Components</b>	<b>4</b>
Components (Typical)	4
<b>Tools/Cutting/Fastening</b>	<b>5</b>
Tools	5
Cutting	5
Fastening and Framing requirements	6
<b>System Install</b>	<b>7</b>
Layout	7
Installation	8
Clips	8-9
Insulation	9-10
Thermal Cap and prep for Girts	11
Girts and accessories	12-16
Corner Girts	12
Edge Girts	12
Standard Girts	12
Substructure Design Options	13
Girt Connector	14-15
Girt Adapter	16
HD Washer and HD Washer Plate	16
U-Shim	16
<b>Appendix</b>	<b>17</b>
Hitch Order Information	17-18
Blank page	19
Contact Info	20

## Material Specifications

Longboard Hitch structural and thermal performance data has been analyzed, calculated, and documented in reports by RDH Building Sciences Inc. Through this process, Longboard has developed an easy-to-use calculator for cladding attachment design and material specifications. These tools and reports were prepared by Longboard Architectural Products and RDH Building Sciences Inc. and are not for use without express written consent.

It is recommended to always consult with a Longboard technical representative in using the calculator to develop an optimized attachment layout considering structural, thermal and project specific conditions. The results from the consultation are intended to be used as guidance and must be verified by a licensed engineer of record in the province or state where the product is being installed.

Contact Longboard at [info@longboardproducts.com](mailto:info@longboardproducts.com) or 1-800-604-0343 for technical support.

### Thermal Performance

- Passive House Certified -Advanced Component
- Up to 94% thermal efficiency
- R-values up to R60 for various wall assemblies



### Structural Performance (Example: Concrete Substrate)

Hitch Clip	Dead Load Capacity★	Insulation Depth	Clip Spacing	Wind Load★★
SD	6 -7.5 psf	1 – 2.5"	32" x 48"	@35 psf
HD	16.5 psf	3"	32" x 48"	@35 psf
	3.5 psf	16"	32" x 48"	@35 psf
HD+	14 psf	6"	32" x 48"	@35 psf
	9.5 psf	16"	32" x 48"	@35 psf

★ 20MPa / 3000 PSI Concrete Substrate

★★ Factored / Ultimate Wind Load

### Material Ordering & Delivery

- Ordering: Hitch Clips (preassembled): 12/box  
Standard Girts & Edge Girts (¾" or 1"): 8', 10', 12, 16' lengths  
Corner Girts & Corner Edge Girts (¾" or 1"): 6' lengths (Bent on site to 3'x3')
- Shipping: Lead time is 10 weeks\* + shipping (\**subject to change*), delivered on skids weighing up to 2000 lbs. A mechanical lift with forks is required on site to receive the order.
- QC: Always inspect the delivery for damage and contact LB ASAP if there are any issues: [info@longboardproducts.com](mailto:info@longboardproducts.com) or 1-800-604-0343 and include your PO# and any pictures if possible. Mark the delivery receipt as "damaged" and accept the delivery as-is. Longboard is not responsible for the installation of blemished or damaged material.

### Storage & Handling

Be sure to store the material flat, keep it dry, safe & secure and remain in unopened cartons until ready to be installed.

### Warranty

Upon substantial completion of the project, register for warranty online here: [longboardproducts.com/warranty](https://longboardproducts.com/warranty)

⚠ Registration is required for the warranty to be in effect.

## Components

### Components (Typical)








Longboard Hitch Cladding Attachment System consists of a Hitch Clip, Girts, and accessories. For all LB components go to [longboardproducts.com](http://longboardproducts.com).

 <p><b>Hitch SD</b> Insulation 1" – 2.5" Available in 1/2" increments SD.15 – SD.30</p>	 <p><b>Hitch HD</b> Insulation 3" – 16" Available in 1/2" increments HD.22 – HD.160</p>	 <p><b>Hitch HD+</b> Insulation 6" – 16" Available in 1/2" increments HDP.47 – HDP.155</p>	 <p><b>Fasteners</b> (By others)</p>
 <p><b>Standard Girts</b> Depths: 3/4"/1" Lengths: 8'/10'/12'/16' STDGRT</p>	 <p><b>Corner Girt/Corner Edge Girt</b> Depths: 3/4"/1" Lengths: 6' CRNGRT/CRNEDGGRT</p>	 <p><b>Edge Girt</b> Depths: 3/4"/1" Lengths: 8'/10'/12'/16' EDGGRT</p>	 <p><b>Girt Connector</b> GRTCNCTR</p>
 <p><b>Girt Adapter</b> GRTADPTR</p>	 <p><b>Plunger Tool</b></p>	 <p><b>Piercing Tool</b></p>	 <p><b>U-Shim</b> (For Girt direct to substrate) SHIM.1001</p>
<p><b>Insulation Kit</b> Includes: -Plunger Tool (x1) INSULKIT -Piercing Tool (x4)</p>			

## Tools/Cutting/Fastening

### Tools

Commonly used tools for Hitch System Install.

				
Chop Saw with Steel cutting blade	Optional Carbide Ferrous Metal Blade 60-80T (for cutting Steel)	Hammer Drill (for Hitch Clip install onto concrete/CMU)	Cordless Drill with Clutch	5/16' & 7/16" Nut Driver Bit
				
Quick Grip Clamp	Tape Measure	Laser Level	Chalk or String Line	Nut Driver Extension Bit

### Cutting

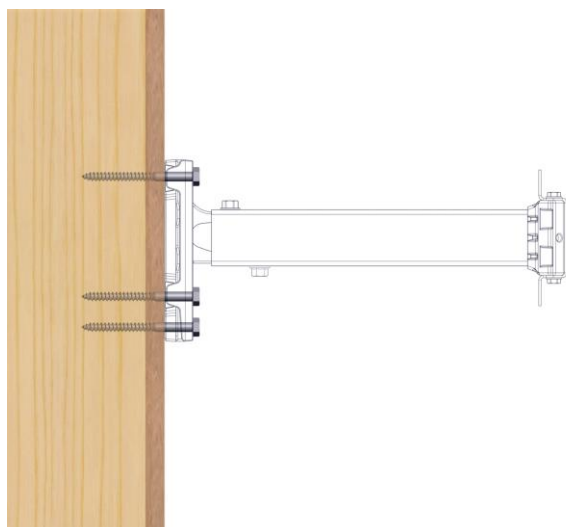
 Always be sure to wear appropriate PPE: eye & hearing protection.

Cut girts using a Miter/Chop Saw to terminate to accurately measured distances between subsequent girts and area limitations.



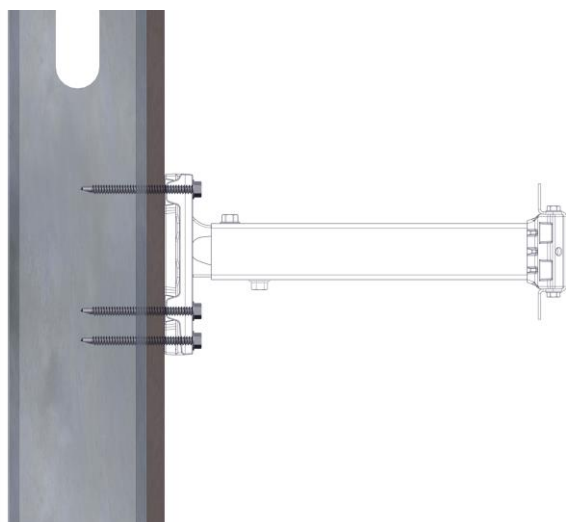
## Fastening & Framing requirements

⚠ All fasteners should be suitable for exterior use and be compatible with the substrate type. **Fasteners should be anchored into a solid secure framing member.**

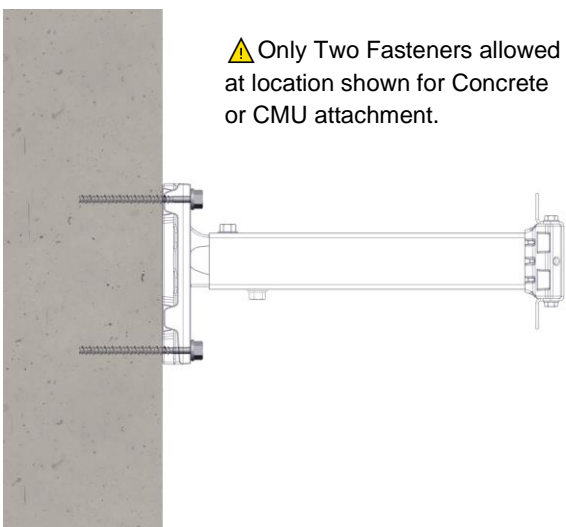


SD	Backup Wall	Fasteners
	Wood Stud SPF	Three #14 x 2 1/2" Lag wood screws/GRK

HD, HD+	Backup Wall	Fasteners
	Wood Stud SPF	Three #14 x 3 1/2" Lag wood screws/GRK



SD, HD, HD+	Backup Wall	Fasteners
	18 Gauge Steel Stud	Three ITW Teks 1/4"-14 x 2 1/2" Self-Drilling Screws
	16 Gauge Steel Stud	Three ITW Teks 1/4"-14 x 2 1/2" Self-Drilling Screws



⚠ Only Two Fasteners allowed at location shown for Concrete or CMU attachment.

SD, HD	Backup Wall	Fasteners
	20Mpa / 3,000 PSI Concrete	Two Ultracon + Hex Flange 1/4" x 3 1/4" (44.4mm Embedment) DFM2ELC170
	CMU*	Two Ultracon + Hex Flange 1/4" x 3 1/4" DFM2ELC170

HD+	Backup Wall	Fasteners
	20Mpa / 3,000 PSI Concrete	Two Hilti KH-EZ 1/4" x 3 1/2" (49mm Embedment)
	CMU*	Two Hilti KH-EZ 1/4" x 3 1/2"

\*CMU fully grouted with 1500 psi prism strength(min)

\*\*Minimum of 2" edge distance to be maintained

## System Install

### Layout

#### Step 1

Establish clip spacing

Contact Longboard and provide the following:

- Insulation thickness(inches)
- Girt clearance, if any(inches)
- Wind Load
- Backup Wall Structure type

#### Step 2

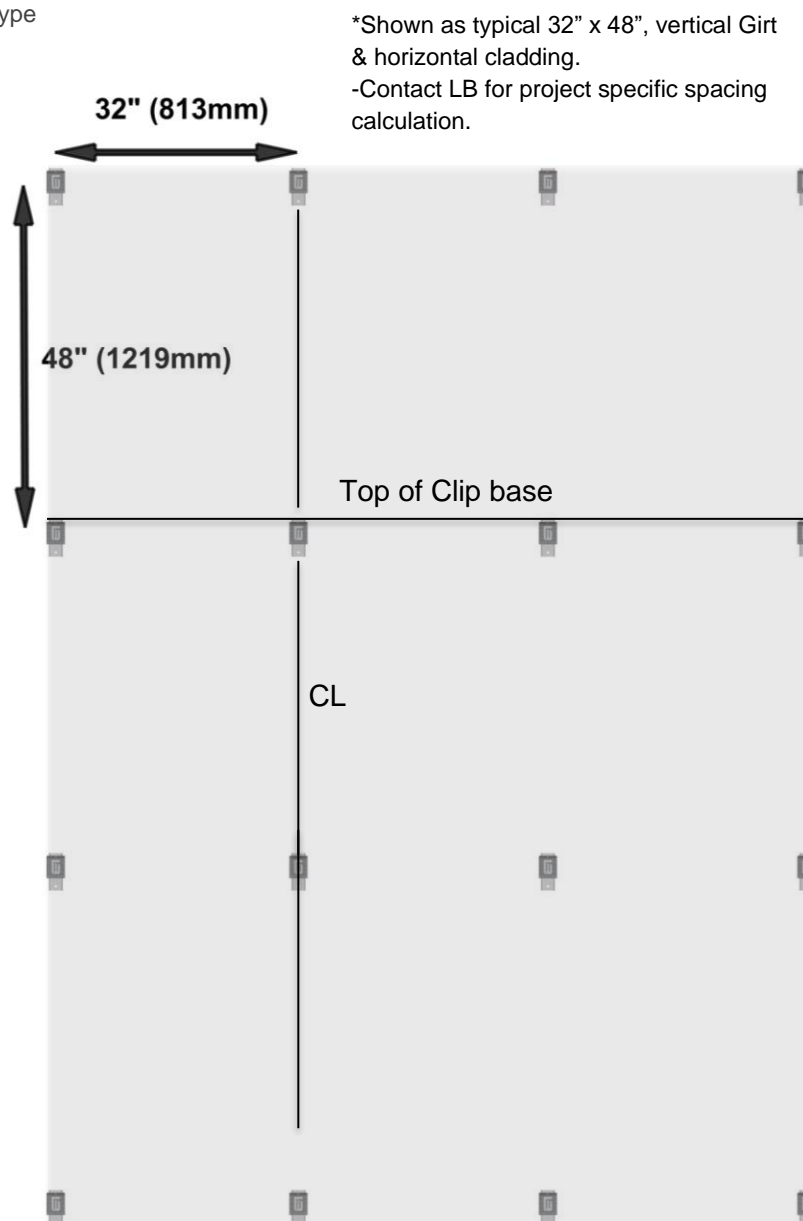
Layout and mark vertical centerlines of clip while maintaining minimum edge distances. Ensure all clips will land on a stud or framing member.

#### Step 3

Layout and mark horizontal lines to the top of the clip base where possible.

#### Step 4

Layout around windows, doors, or other penetrations.



## Installation

### Step 5 Clips

Step 5A -Place and secure Hitch Clips. Anchor with Fasteners into substrate/structural member. See page 6 for fastener type and Qty.

**⚠ Note:** Check to make sure Hitch Clip Base is securely fastened and tight to the substrate.

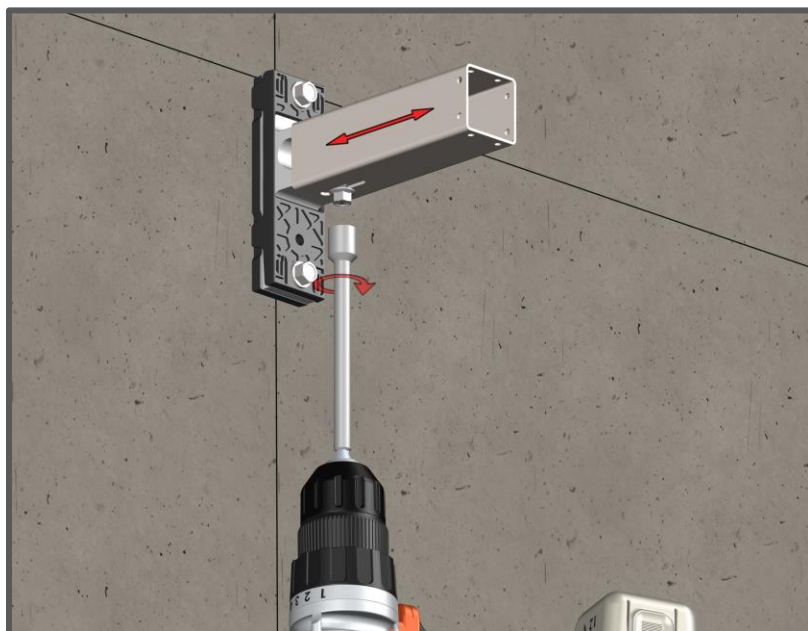
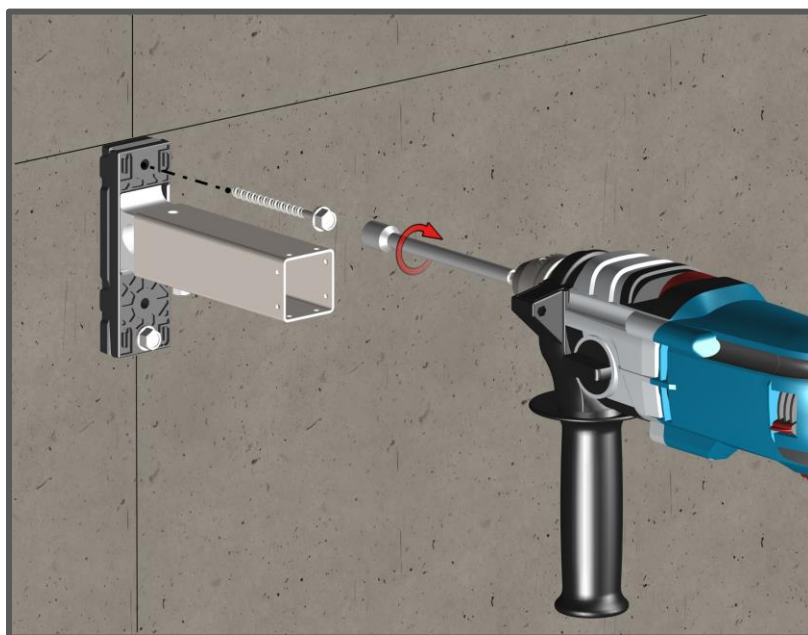
Step 5B -Check for high points of the wall area. It is good practice to check installation level/plumb and flat/straight, for best results.

### Step 5C -Adjust Clip Depth

#### **-HD/HD+**

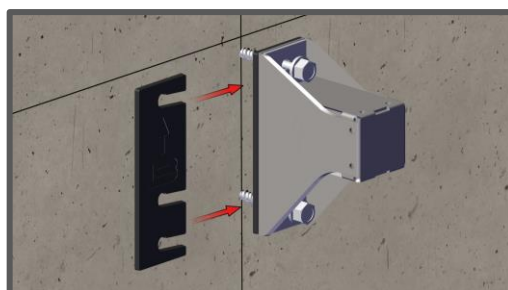
Adjust the Post Arm along the slot to achieve the correct measurement and wall alignment accordingly. Tighten screw under the Post Arm to secure Hitch Clip dimension.

Note: Check the measurement from substrate after tightening to confirm.



#### **-SD**

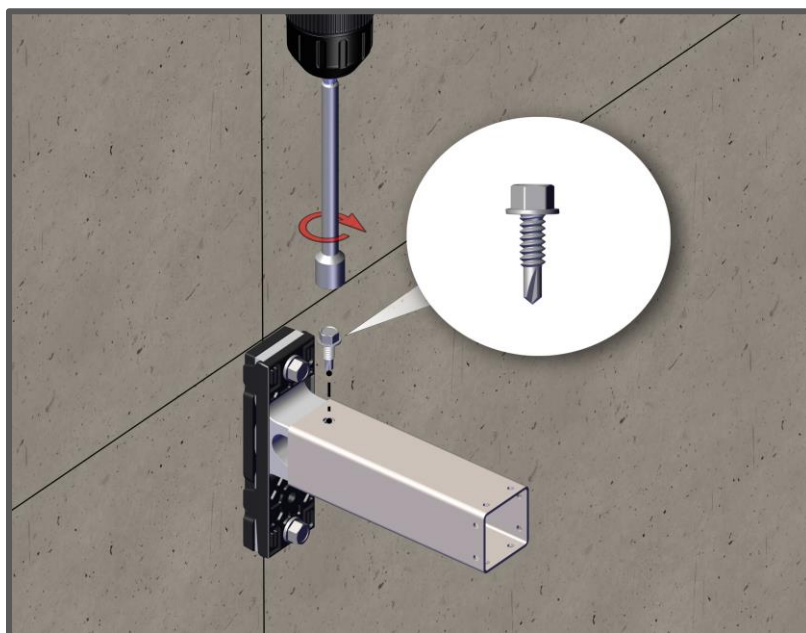
Loosen fasteners and place additional shim(s) where needed at low spots. Limit the use of SD shims to 3 max (3/8"). (Skip to Step 2)



#### Step 5D

##### **-HD/HD+**

Install the 1/4" -20 Self-Drilling Hex Head Screw(supplied) into the top hole to secure Post Arm into place. If necessary, pre-drill the hole using a 3/16" drill bit.



#### Step 6 Stick Pins

Install Stick Pins where necessary to prep for insulation.

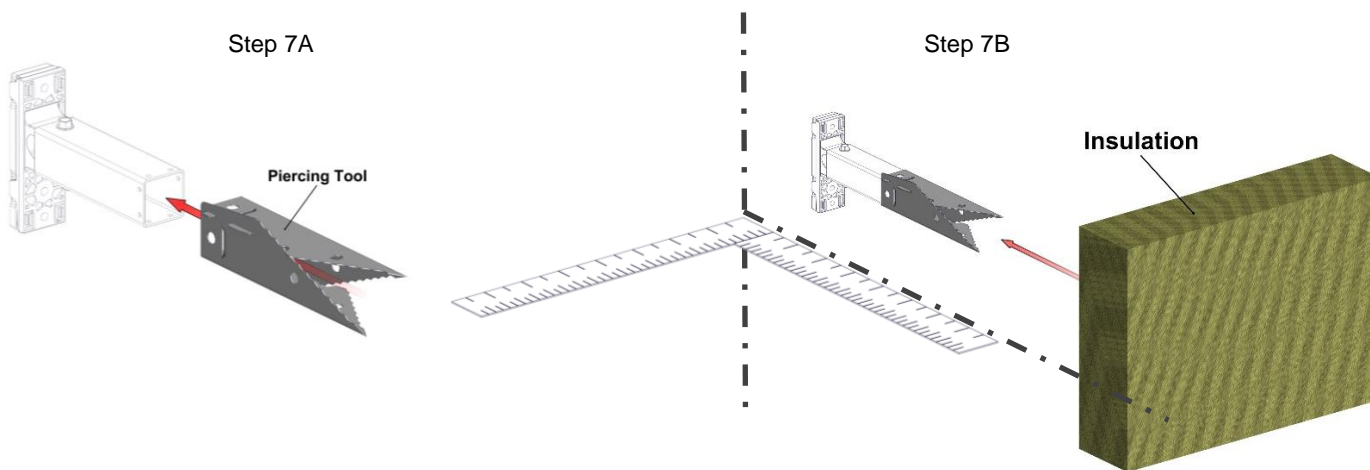
#### Step 7 Insulation

Compatible insulation:

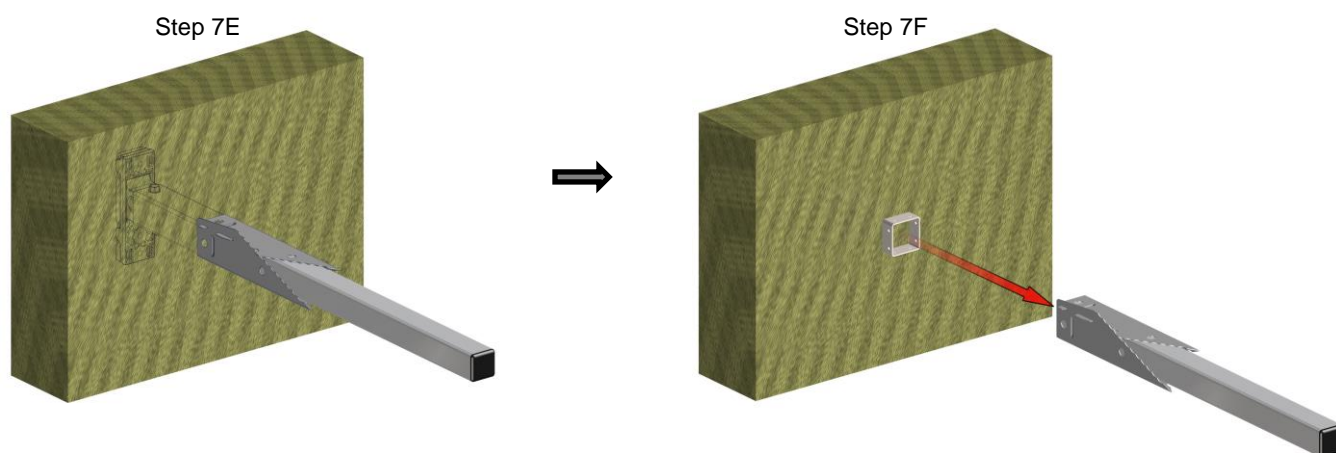
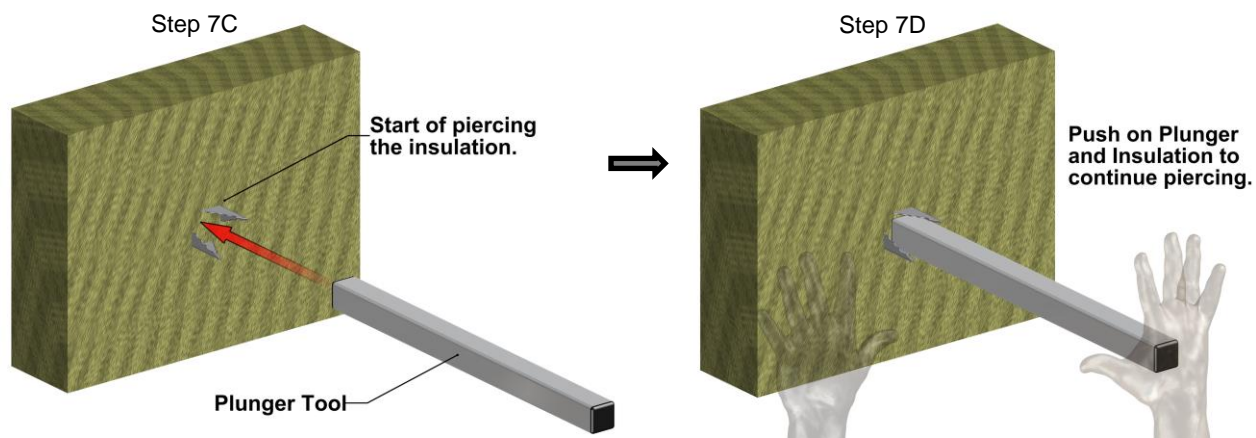
- Mineral Wool
- Poly ISO
- EPS
- XPS
- Fiberglass

7A -Install the insulation by placing the Piercing Tool onto the Hitch Clip and slide it onto the end of the Post Arm and make sure it is secure.

7B -Next slide your insulation at the measured location onto the Piercing Tool. See continued piercing sequence next page.



# Piercing Sequence

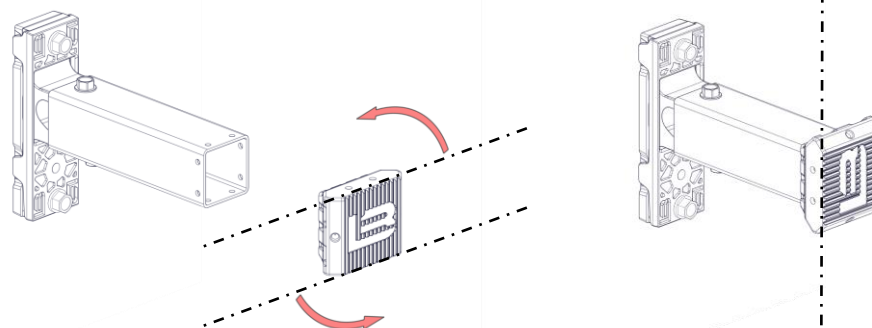
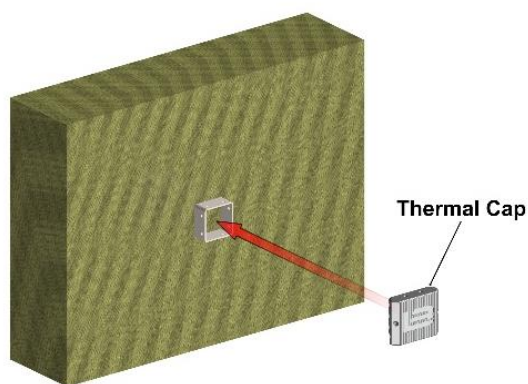


## HD/HD+

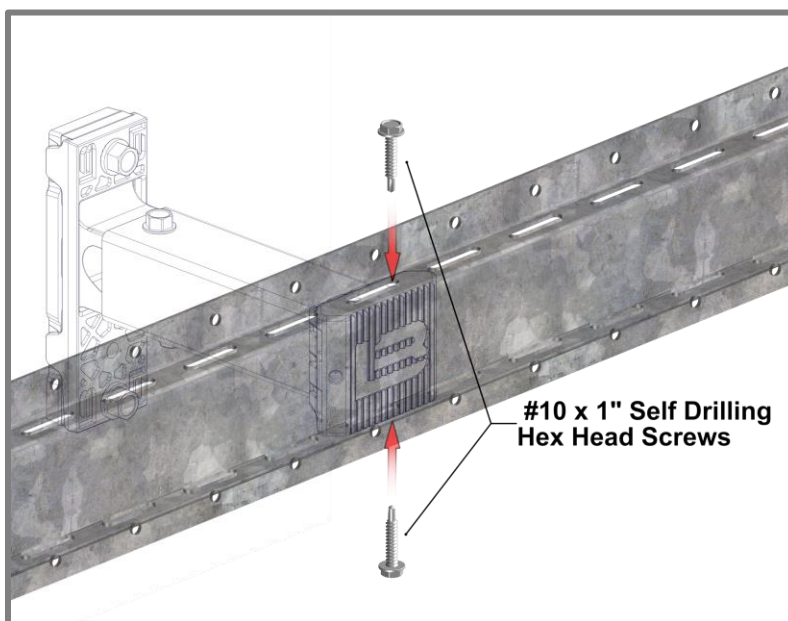
The Piercing Tool cuts an internal plug of the insulation, to be fully inserted into the Hitch Post Arm to eliminate thermal convection loading.

## Step 8 – Thermal Cap and prep for Girts

After insulation is installed, place the Thermal Caps with the flat sides of the caps in the orientation of the Girts. The Thermal Cap and the Post Arm have pre-drilled holes for fastening.



Rotate Thermal Cap 90° to change Girt orientation.

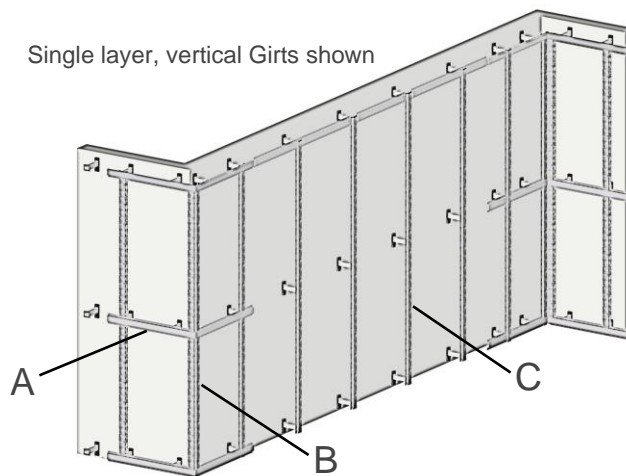


Note: 2 x #10 x 1" Self Drilling Hex Head Screws are included with Thermal Cap.

Single layer, vertical Girts shown

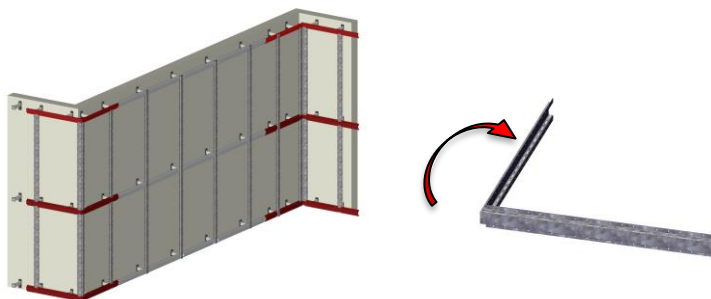
### Step 9 Girts

- A – Corner Girts
- B – Edge Girts
- C – Standard Girts



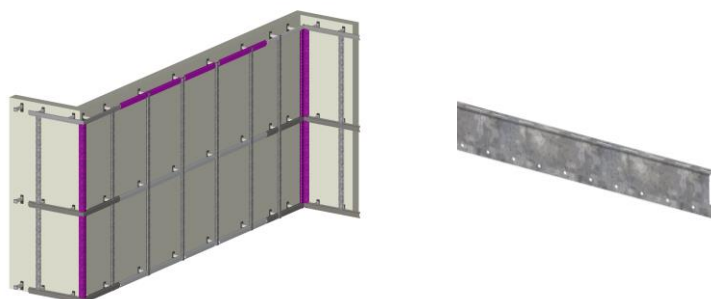
#### Step 9A - Corner Girts/Corner Edge Girts

The Corner Girt is supplied straight with cut flanges in the middle and needs to be bent onsite to the required angle. It can be bent for outside or inside corners. Install at the corners of the building.



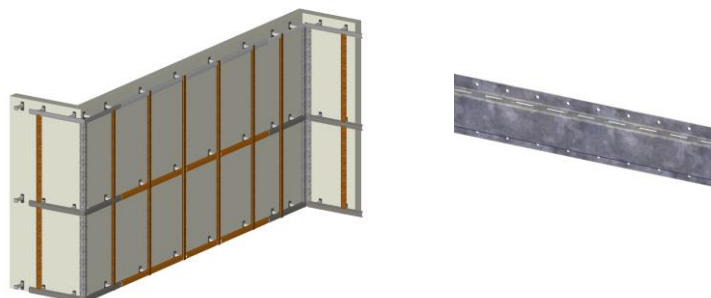
#### Step 9B – Edge Girts

Install Edge Girts around the perimeter of the wall area. These Girts support cladding components at the edge of the application where required. Use Girt Connectors to attach to adjacent Girts.

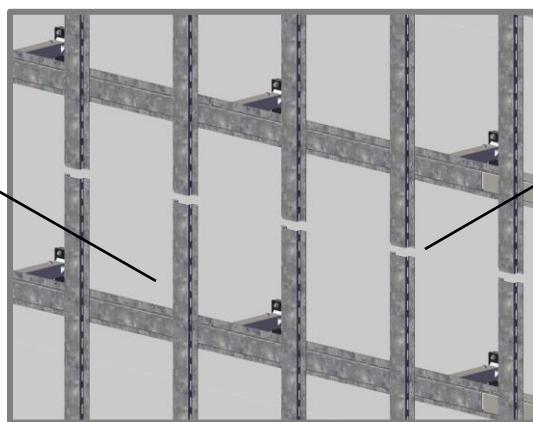


#### Step 9C - Standard Girts

Next install the Standard Girts throughout the main wall area. For support needed in specific areas use Standard Girts and Girt Connectors to Bridge across areas.  
(See next page for Girt Connector details).



Girts max 12" cantilevered without support.



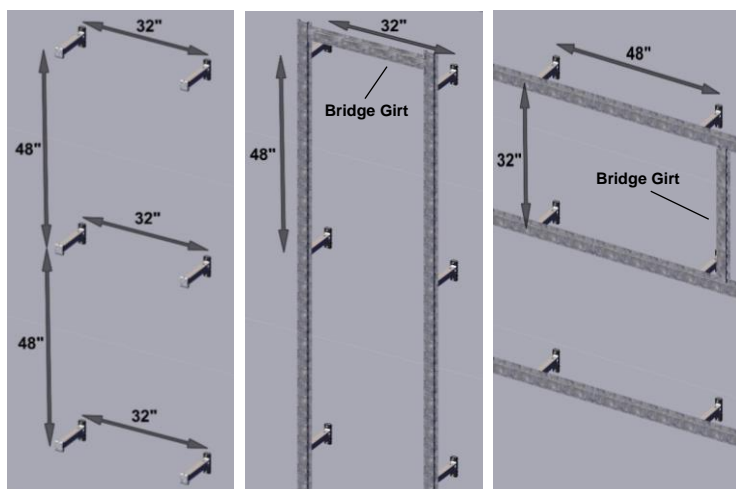
Allow for 1/4" gap between Girt ends.

## Substructure Design Options

HITCH CLIP SPACING CONSISTENT, TO MAINTAIN THERMAL EFFICIENCY

### SINGLE LAYER GIRTS

WIND LOAD <40 PSF using Longboard Planks



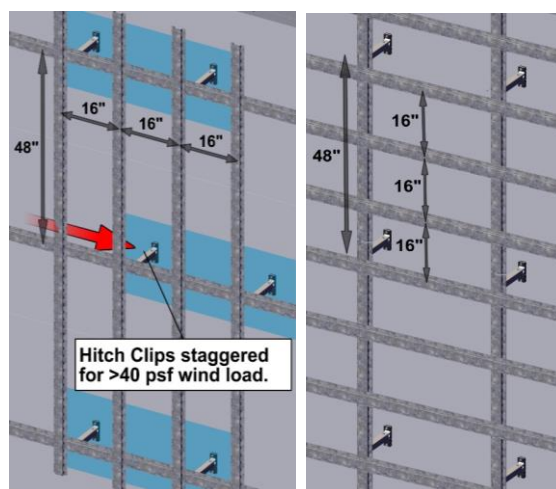
Typical Hitch Clip Layout 32" x 48"

Horizontal Cladding Install  
Girts Installed Vertically

Vertical Cladding Install  
Girts Installed Horizontally

### DUAL LAYER GIRTS

WIND LOAD >40 PSF using Longboard Planks



Hitch Clips staggered for >40 psf wind load.

Horizontal Cladding Install  
Second Layer Girts Installed Vertically

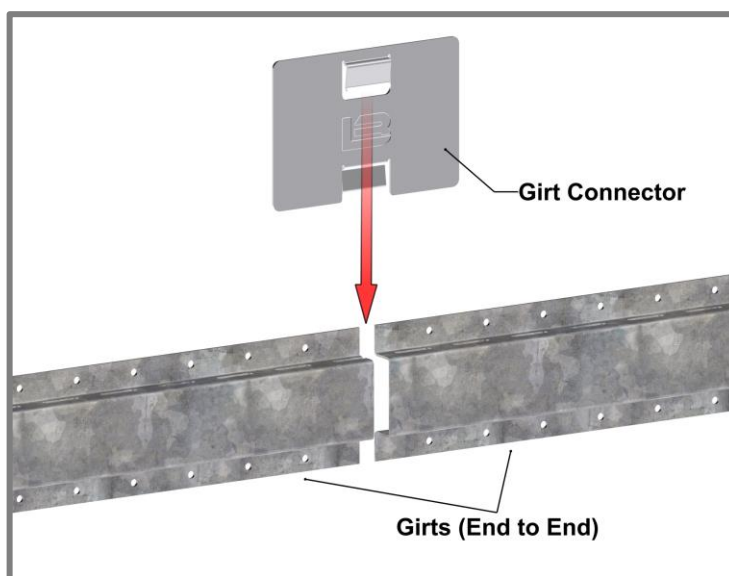
Vertical Cladding Install  
Second Layer Girts Installed Horizontally

## Girt Connector

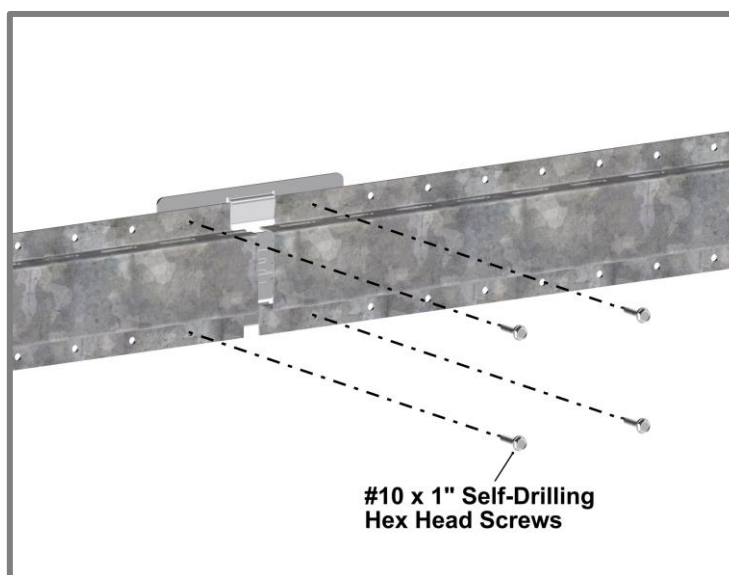
The Girt Connector is used to connect Girts perpendicular and end to end. It is used to connect Standard Girts, Edge Girts, and Corner Girts.

### End to End Connection

Slide the Girt Connector tab over the Girt flange to hold it in place while using screws to secure it.

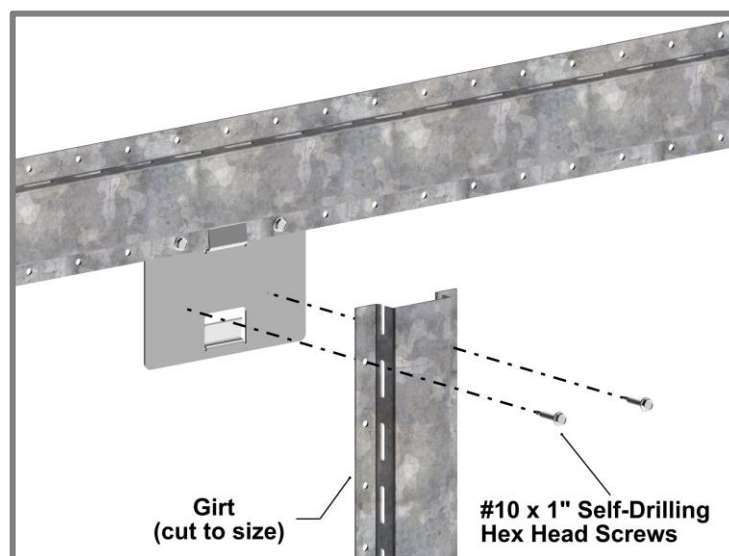
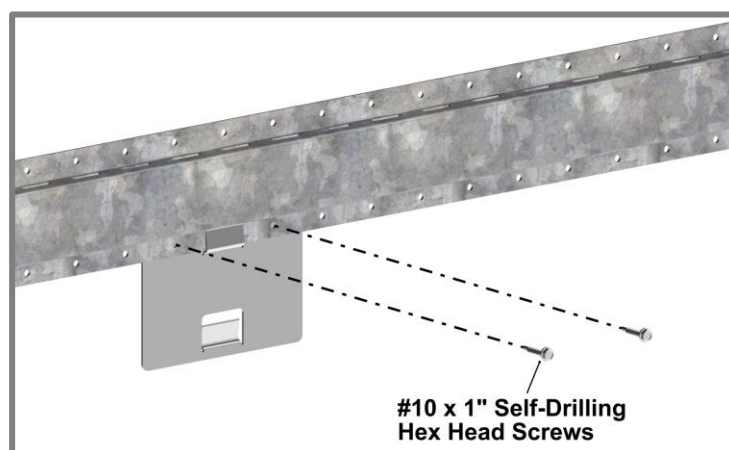
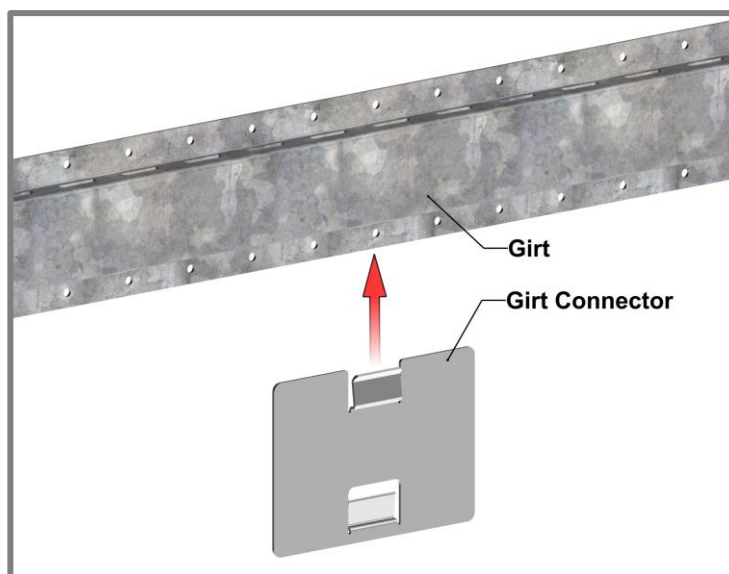


**⚠ Note:** Confirm measurement of Girt before installing screws.



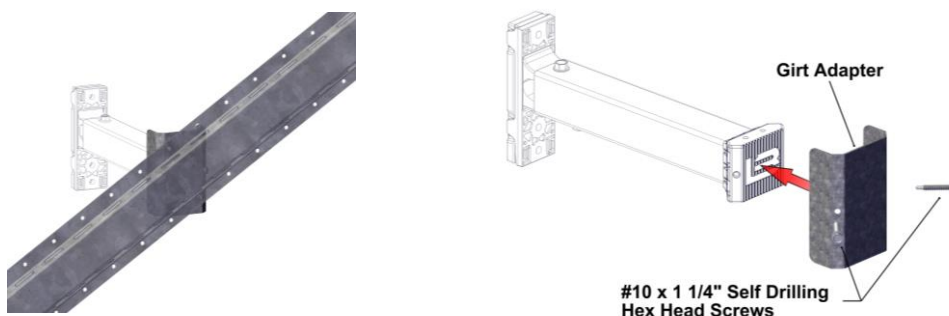
## Perpendicular Connection

Slide the Girt Connector tab over the Girt flange to hold it in place while using screws to secure it. Then align second Girt and secure with screws.



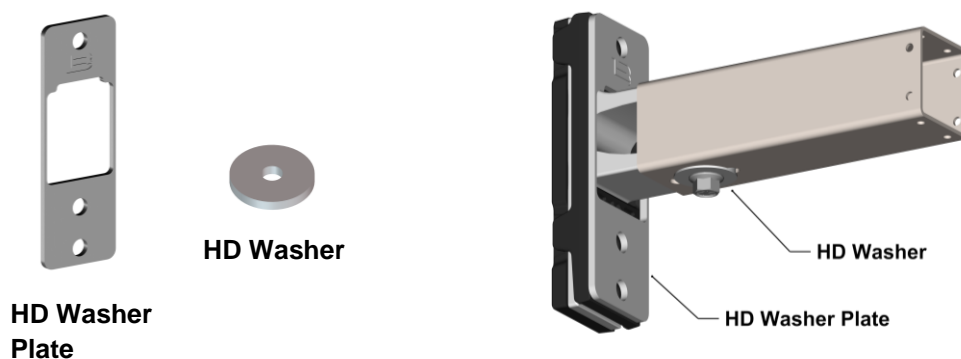
### Girt Adapter

The Girt Adapter is an accessory to the Hitch system to be used when 3<sup>rd</sup> party Girts/Rails are specified. It allows a surface for mounting at any angle. The Girt Adapter can also be rotated.



### HD Washer and Washer Plate

The HD Washer and HD Washer Plate are required for project specific wind loads and larger depth walls. These components come pre-assembled.



### U-Shim

The 1/16" U-Shim is installed between the Girts and the substrate to allow for water run-off. U-Shims are sold separately.



# Appendix

## HITCH Order Information

### Hitch™ Clips \*

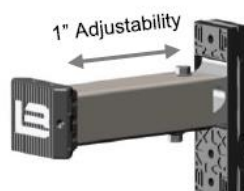
Type	1"	1.5"	2"	2.5"
<b>HITCH™ SD</b>	HITCH.SD.15	HITCH.SD.20	HITCH.SD.25	HITCH.SD.30

Type	3"	4"	6"	8"	10"	16"
<b>HITCH™ HD</b>	HITCH.HD.22	HITCH.HD.32	HITCH.HD.52	HITCH.HD.72	HITCH.HD.92	HITCH.HD.152

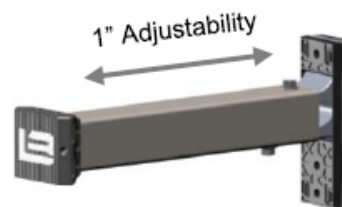
Type	6"	8"	10"	12"	14"	16"
<b>HITCH™ HD+</b>	HITCH.HDP.47	HITCH.HDP.67	HITCH.HDP.87	HITCH.HDP.107	HITCH.HDP.127	HITCH.HDP.147



Hitch SD



Hitch HD



Hitch HD+

\* Clip SKUs and order information are non-exhaustive and for illustrative purposes only  
Sample clip sizes are presented that would accommodate a certain exterior insulation thickness  
Always consult the Hitch calculator and Longboard technical representative to verify clip order information

### Hitch™ Girts

Type	96"	120"	144"	192"
<b>3/4" Standard Girt</b>	HITCH.75STDGRT.96	HITCH.75STDGRT.120	HITCH.75STDGRT.144	HITCH.75STDGRT.192
<b>1" Standard Girt</b>	HITCH.1STDGRT.96	HITCH.1STDGRT.120	HITCH.1STDGRT.144	HITCH.1STDGRT.192
<b>3/4" Edge Girt</b>	HITCH.75EDGGRT.96	HITCH.75EDGGRT.120	HITCH.75EDGGRT.144	HITCH.75EDGGRT.192
<b>1" Edge Girt</b>	HITCH.1EDGGRT.96	HITCH.1EDGGRT.120	HITCH.1EDGGRT.144	HITCH.1EDGGRT.192



Standard Girt



Edge Girt

## Hitch™ Corner Girts

Type	72"
3/4" Corner Girt	HITCH.75CRNGRT.72
1" Corner Girt	HITCH.1CRNGRT.72
3/4" Corner Edge Girt	HITCH.75CRNEDGGRT.72
1" Corner Edge Girt	HITCH.1CRNEDGGRT.72



Corner Girt



Corner Edge Girt

## Hitch™ Installation Accessories

Girt Adapter	HITCH.GRTADPTR
Girt Connector	HITCH.GRTCNCNTR
U-Shim	SHIM.1001
Insulation Piercing Tool	HITCH.PRCNGTL
Insulation Plunger Tool	HITCH.PLNGRTL
Insulation Piercing Kit	HITCH.INSULKIT

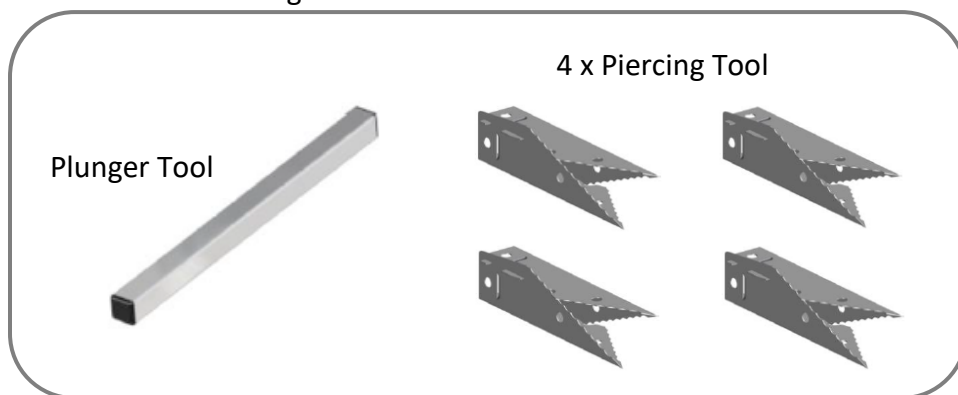


Girt Adapter



Girt Connector

### Insulation Piercing Kit



U-Shim

**BLANK  
PAGE**



Longboard Architectural Products Inc.  
© Longboard Architectural Products Inc. All rights reserved.

Longboard® is a registered trademark of Longboard Architectural Products Inc.

Longboard  
1777 Clearbrook Road  
Abbotsford, BC V2T 8X8  
Canada  
[longboardproducts.com](http://longboardproducts.com)

Every effort has been made to ensure that the information in these installation guidelines is accurate. Longboard is not responsible for printing or clerical errors.

For more information, contact client care at [info@longboardproducts.com](mailto:info@longboardproducts.com) or call toll free 1-800-604-0343.



## Clips

Please note, clip SKUs and order information are non-exhaustive and for illustrative purposes only.  
Sample clip sizes are presented that would accommodate a certain exterior insulation thickness.  
Always consult the Hitch calculator and Longboard technical representatives to verify clip order information.

### Hitch SD

Insulation Thickness	SKU
1"	HITCH.SD.15
1 ½"	HITCH.SD.20
2"	HITCH.SD.25
2 ½"	HITCH.SD.30

### Hitch HD

Insulation Thickness	SKU
3"	HITCH.HD.22
4"	HITCH.HD.32
6"	HITCH.HD.52
8"	HITCH.HD.72
10"	HITCH.HD.92
16"	HITCH.HD.152

### Hitch HD+

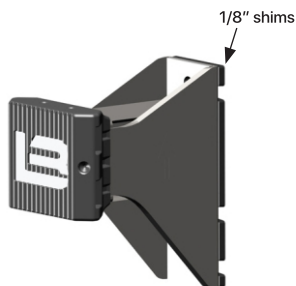
Insulation Thickness	SKU
6"	HITCH.HDP.47
8"	HITCH.HDP.67
10"	HITCH.HDP.87
12"	HITCH.HDP.107
14"	HITCH.HDP.127
16"	HITCH.HDP.147

### Installation Accessories

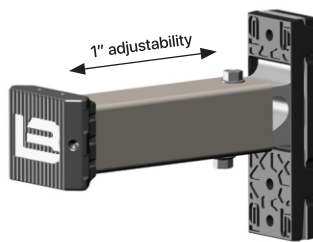
Product	Qty	SKU
Girt Adapter	1	HITCH.GRTADPTR
Girt Connector	1	HITCH.GRTCNCNTR
Insulation Piercing Tool	1	HITCH.PRCNGTL
Insulation Plunger Tool	1	HITCH.PLNGRTL
Insulation Piercing Kit	1	HITCH.INSULKIT
SD Thermal Base Shims	48, bag	SDTHBSHM.N48
1/16" U-SHIM	250, bag	SHIM.1001

## Girts

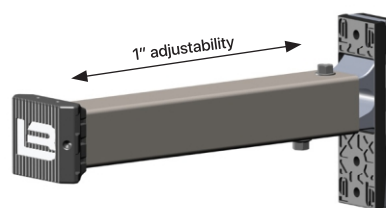
Depth	Type	72"	96"	120"	144"	192"
¾"	Standard	-	HITCH.75STDGRT.96	HITCH.75STDGRT.120	HITCH.75STDGRT.144	HITCH.75STDGRT.192
¾"	Edge	-	HITCH.75EDGGRT.96	HITCH.75EDGGRT.120	HITCH.75EDGGRT.144	HITCH.75EDGGRT.192
¾"	Corner	HITCH.75CRNGRT.72	-	-	-	-
¾"	Corner Edge	HITCH.75CRNEDGGRT.72	-	-	-	-
1"	Standard	-	HITCH.1STDGRT.96	HITCH.1STDGRT.120	HITCH.1STDGRT.144	HITCH.1STDGRT.192
1"	Edge	-	HITCH.1EDGGRT.96	HITCH.1EDGGRT.120	HITCH.1EDGGRT.144	HITCH.1EDGGRT.192
1"	Corner	HITCH.1CRNGRT.72	-	-	-	-
1"	Corner Edge	HITCH.1CRNEDGGRT.72	-	-	-	-



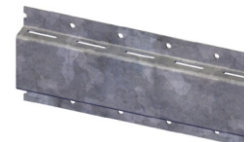
Hitch™ SD



Hitch™ HD



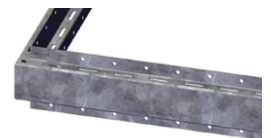
Hitch™ HD+



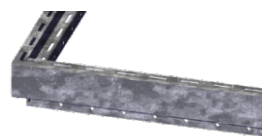
Standard Girt



Edge Girt



Corner Girt



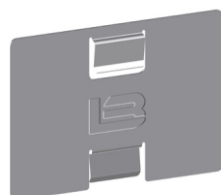
Corner Edge Girt



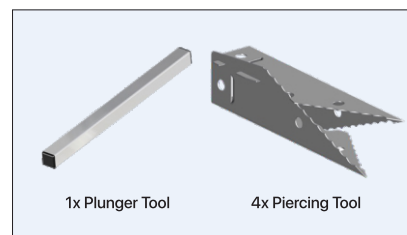
U-Shim



Girt Adapter



Girt Connector



Insulation Piercing Kit