

# LONGBOARD ARCHITECTURAL PRODUCTS

## BOARD AND BATTEN PLANK SYSTEM (HVHZ)



**LONGBOARD**  
ARCHITECTURAL PRODUCTS

1777 CLEARBROOK RD #120  
ABBOTSFORD, BC V2T 5X5, CANADA  
PH: (800) 604-0343

**GENERAL NOTES:**

- THE PRODUCT SHOWN HEREIN IS DESIGNED AND MANUFACTURED TO COMPLY WITH THE CURRENT FLORIDA BUILDING CODE (FBC), **INCLUDING** HVHZ AND HAS BEEN EVALUATED ACCORDING TO THE FOLLOWING:
  - TAS 202-94
  - TAS 203-94
  - ASTM E8-16
- ADEQUACY OF THE EXISTING STRUCTURAL CONCRETE/MASONRY AND 2X FRAMING AS A MAIN WIND FORCE RESISTING SYSTEM CAPABLE OF WITHSTANDING AND TRANSFERRING APPLIED PRODUCT LOADS TO THE FOUNDATION IS THE RESPONSIBILITY OF THE ENGINEER OR ARCHITECT OF RECORD FOR THE PROJECT OF INSTALLATION.
- 1X AND 2X MEMBERS (WHEN USED) SHALL BE DESIGNED AND ANCHORED TO PROPERLY TRANSFER ALL LOADS TO THE STRUCTURE. BUCK DESIGN AND INSTALLATION IS THE RESPONSIBILITY OF THE ENGINEER OR ARCHITECT OF RECORD FOR THE PROJECT OF INSTALLATION.
- THE INSTALLATION DETAILS DESCRIBED HEREIN ARE GENERIC AND MAY NOT REFLECT ACTUAL CONDITIONS FOR A SPECIFIC SITE. IF SITE CONDITIONS CAUSE INSTALLATION TO DEVIATE FROM THE REQUIREMENTS DETAILED HEREIN, A LICENSED ENGINEER OR ARCHITECT SHALL PREPARE SITE SPECIFIC DOCUMENTS FOR USE WITH THIS DOCUMENT.
- ALUMINUM SIDING MEETS THE REQUIREMENTS OF THE CURRENT FBC. APPLICATION OF ALUMINUM SIDING SHALL MEET REQUIREMENTS OF THE CURRENT FBC.
- ALUMINUM SIDING SPECIFICATIONS:
  - MATERIAL: 6063-T5
  - MINIMUM THICKNESS: 0.0358"
- INSTALLATION OF SIDING ACCESSORIES SUCH AS TRIM COMPONENTS SHALL BE DONE IN ACCORDANCE WITH THE FLORIDA BUILDING CODE AND THE MANUFACTURER'S INSTRUCTIONS.

**INSTALLATION NOTES:**

- ONE (1) INSTALLATION ANCHOR IS REQUIRED AT EACH ANCHOR LOCATION SHOWN.
- THE NUMBER OF INSTALLATION ANCHORS DEPICTED IS THE MINIMUM NUMBER OF ANCHORS TO BE USED FOR PRODUCT INSTALLATION.
- INSTALL INDIVIDUAL INSTALLATION ANCHORS WITHIN A TOLERANCE OF ±1/2 INCH OF THE DEPICTED LOCATION IN THE ANCHOR LAYOUT DETAIL (I.E., WITHOUT CONSIDERATION OF TOLERANCES). TOLERANCES ARE NOT CUMULATIVE FROM ONE INSTALLATION ANCHOR TO THE NEXT.
- MINIMUM EMBEDMENT AND EDGE DISTANCE EXCLUDE WALL FINISHES, INCLUDING BUT NOT LIMITED TO STUCCO, FOAM, BRICK VENEER, SHEATHING AND SIDING.
- INSTALLATION ANCHORS AND ASSOCIATED HARDWARE MUST BE MADE OF CORROSION RESISTANT MATERIAL OR HAVE A CORROSION RESISTANT COATING.
- FOR HOLLOW BLOCK AND GROUT FILLED BLOCK, DO NOT INSTALL INSTALLATION ANCHORS INTO MORTAR JOINTS. EDGE DISTANCE IS MEASURED FROM FREE EDGE OF BLOCK OR EDGE OF MORTAR JOINT INTO FACE SHELL OF BLOCK.
- INSTALLATION ANCHORS SHALL BE INSTALLED IN ACCORDANCE WITH ANCHOR MANUFACTURER'S INSTALLATION INSTRUCTIONS, AND ANCHORS SHALL NOT BE USED IN SUBSTRATES WITH STRENGTHS LESS THAN THE MINIMUM STRENGTH SPECIFIED BY THE ANCHOR MANUFACTURER.
- PRODUCT SHALL BE INSTALLED IN FRONT OF CONSTRUCTION THAT COMPLIES WITH SECTION 1626.4 OF THE FLORIDA BUILDING CODE.
- INSTALLATION ANCHOR CAPACITIES FOR PRODUCTS HEREIN ARE BASED ON SUBSTRATE MATERIALS WITH THE FOLLOWING PROPERTIES:
  - WOOD - MINIMUM SPECIFIC GRAVITY OF 0.55.
  - WOOD- MINIMUM 5/8" C/D GRADE PLYWOOD.
  - STEEL - MINIMUM YIELD STRENGTH OF 36 KSI. MINIMUM 18 GA. WALL THICKNESS.
  - ALUMINUM - MINIMUM 1/8 INCH THICK 6063-T5 ALUMINUM.
  - CONCRETE -MINIMUM COMPRESSIVE STRENGTH OF 3000 PSI.
  - MASONRY - CMU UNIT STRENGTH CONFORMS TO ASTM C-90, WITH MIN. COMPRESSIVE STRENGTH OF 2000 PSI AND GROUT CONFORMS TO ASTM C 476, MIN. GROUT COMPRESSIVE STRENGTH OF 2000 PSI.

TABLE OF CONTENTS	
SHEET	SHEET DESCRIPTION
1	GENERAL NOTES, INSTALLATION NOTES AND DESIGN PRESSURE TABLE
2	ELEVATION AND ANCHOR LAYOUT
3	VERTICAL SECTION AND ANCHOR DETAILS
4	HORIZONTAL SECTION AND ANCHOR DETAILS
5	BILL OF MATERIALS AND COMPONENTS

DESIGN PRESSURE TABLE - 7" BOARD AND BATTEN PLANK					
VERTICAL O.C. SPACING (IN)	ALLOWABLE DESIGN PRESSURE (PSF)				
	WOOD	STEEL	ALUM.	CONCRETE	MASONRY
10	120.0	120.0	120.0	120.0	120.0
12	118.3	120.0	118.2	120.0	116.6
16	88.7	120.0	88.7	120.0	87.4

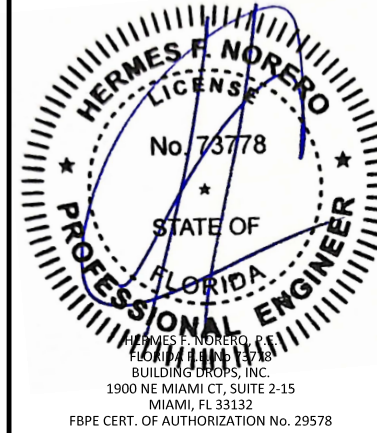
TITLE: BOARD AND BATTEN PLANK SYSTEM (HVHZ)  
GENERAL NOTES, INSTALLATION NOTES & DESIGN PRESSURE TABLE

PREPARED BY: 

BUILDING DROPS, INC.  
1900 NE MIAMI CT, SUITE 2-15  
MIAMI, FL 33132  
PH: (954)399-8478  
FAX: (954)744-4738  
WEB: www.buildingdrops.com

REMARKS	BY	DATE

THE INSTALLATION DETAILS DESCRIBED HEREIN ARE GENERIC AND MAY NOT REFLECT ACTUAL CONDITIONS FOR A SPECIFIC SITE. IF SITE CONDITIONS CAUSE INSTALLATION TO DEVIATE FROM THE REQUIREMENTS DETAILED HEREIN, A LICENSED ENGINEER OR ARCHITECT SHALL PREPARE SITE SPECIFIC DOCUMENTS FOR USE WITH THIS DOCUMENT.



FL #: **FL47291**

DATE: **01.20.25**

DWG. BY: **DB**      CHK. BY: **HFN**

SCALE: **NTS**

DWG. #: **LBD005**

SHEET: **1**

OF 5

c:\users\d\wamiwata\building\_drops\_inc\building\_drops\_projects\longboard\_architectural\_products\lbc-24-0532 - fbc submittal - board & batten plank lap\_siding\_plank\dwgs\lbd005.dwg 2/11/2025 8:30 AM



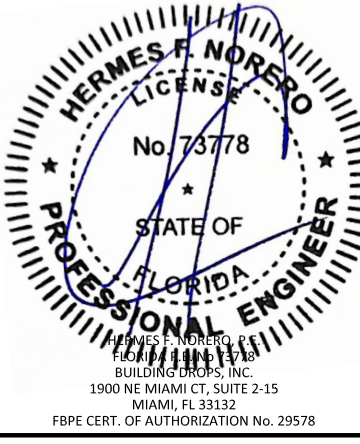
TITLE: BOARD AND BATTEN PLANK SYSTEM (HVHZ) VERTICAL SECTION AND ANCHOR DETAILS

PREPARED BY: BUILDING DROPS, INC.  
1900 NE MIAMI CT, SUITE 2-15  
MIAMI, FL 33132  
PH: (954)399-8478  
FAX: (954)744-4738  
WEB: www.buildingdrops.com

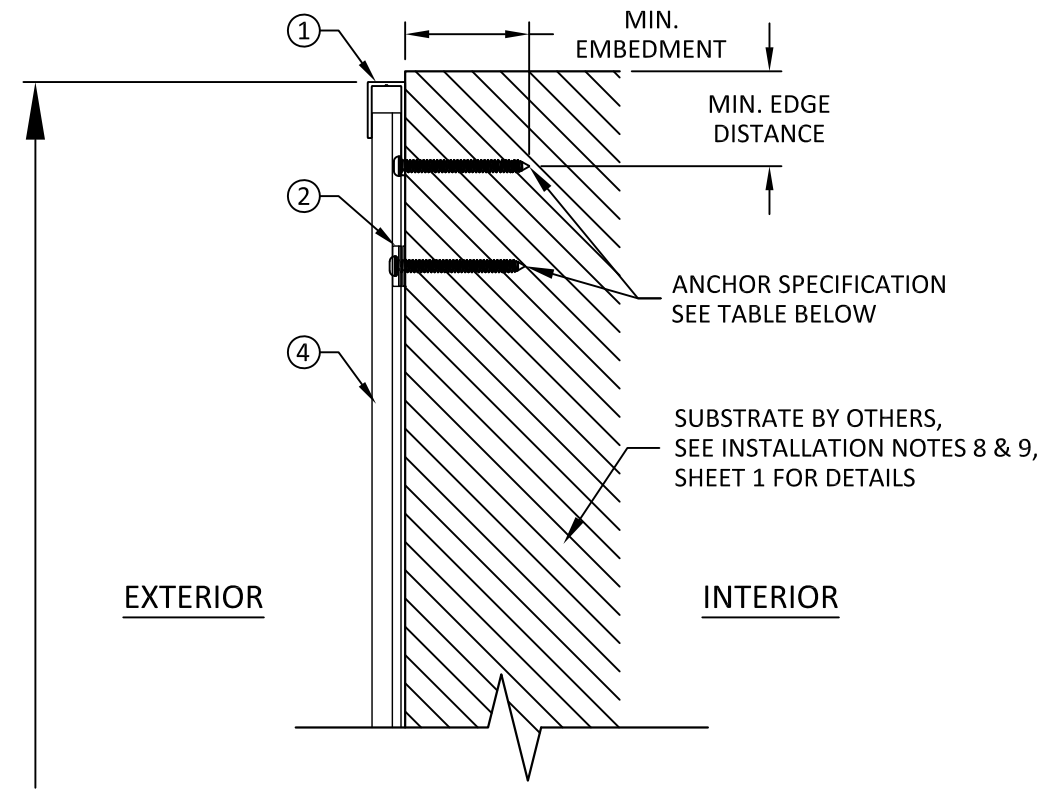


REMARKS	BY	DATE

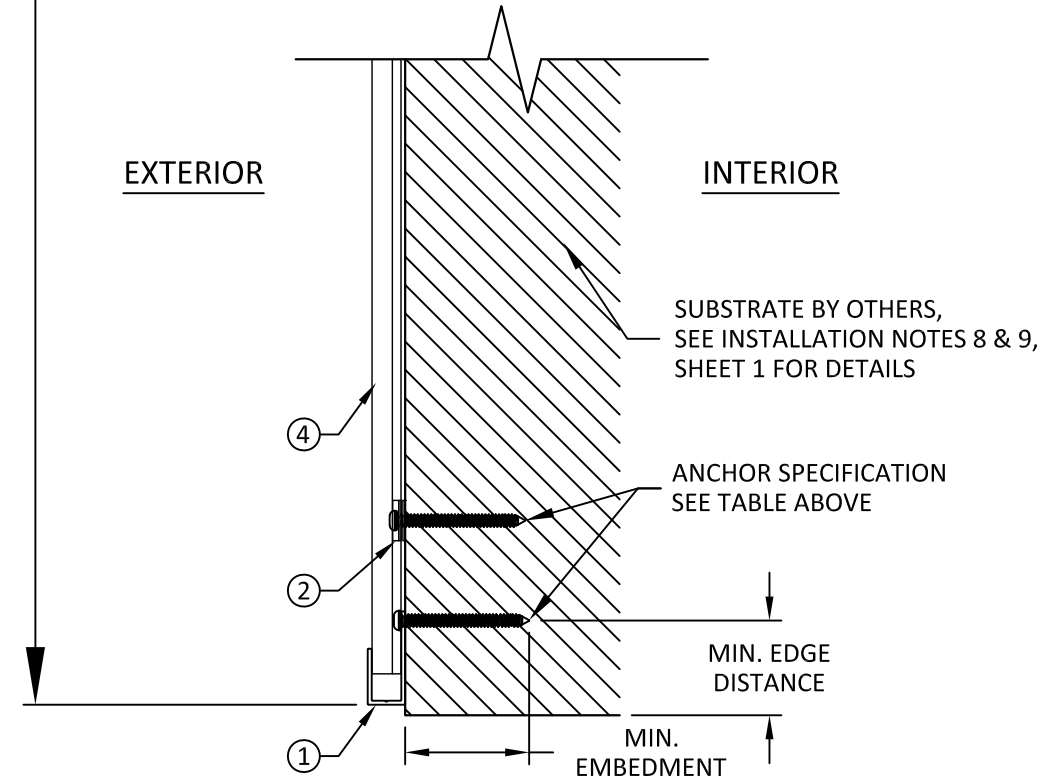
THE INSTALLATION DETAILS DESCRIBED HEREIN ARE GENERIC AND MAY NOT REFLECT ACTUAL CONDITIONS FOR A SPECIFIC SITE. IF SITE CONDITIONS CAUSE INSTALLATION TO DEVIATE FROM THE REQUIREMENTS DETAILED HEREIN, A LICENSED ENGINEER OR ARCHITECT SHALL PREPARE SITE SPECIFIC DOCUMENTS FOR USE WITH THIS DOCUMENT.



FL #:	<b>FL47291</b>
DATE:	<b>01.20.25</b>
DWG. BY:	<b>DB</b>
CHK. BY:	<b>HFN</b>
SCALE:	<b>NTS</b>
DWG. #:	<b>LBD005</b>
SHEET:	<b>3</b>



SUBSTRATE	ANCHOR DESCRIPTION	MIN. EMBEDMENT	MIN. EDGE DISTANCE
WOOD: MIN. S.G. = 0.55	#10 WOOD PAN HEAD SCREW	1.50"	0.50"
WOOD: MIN. 5/8" C/D GRADE PLYWOOD		0.25" PAST PLYWOOD STRUCTURE	1"
STEEL: MIN. 18 GA., MIN. Fy=36 KSI	#10 SELF-DRILLING OR SELF-TAPPING PAN HEAD SCREW	3 THREADS PENETRATION PAST METAL STRUCTURE	0.75"
ALUM.: MIN. 1/8", MIN. 6063-T5			
CONCRETE: MIN. F'C = 3000 PSI	3/16" HEX HEAD ITW TAPCON	1"	1.875"
HOLLOW / GROUT-FILLED BLOCK PER C-90: MIN. F'C = 2000 PSI		1"	4"



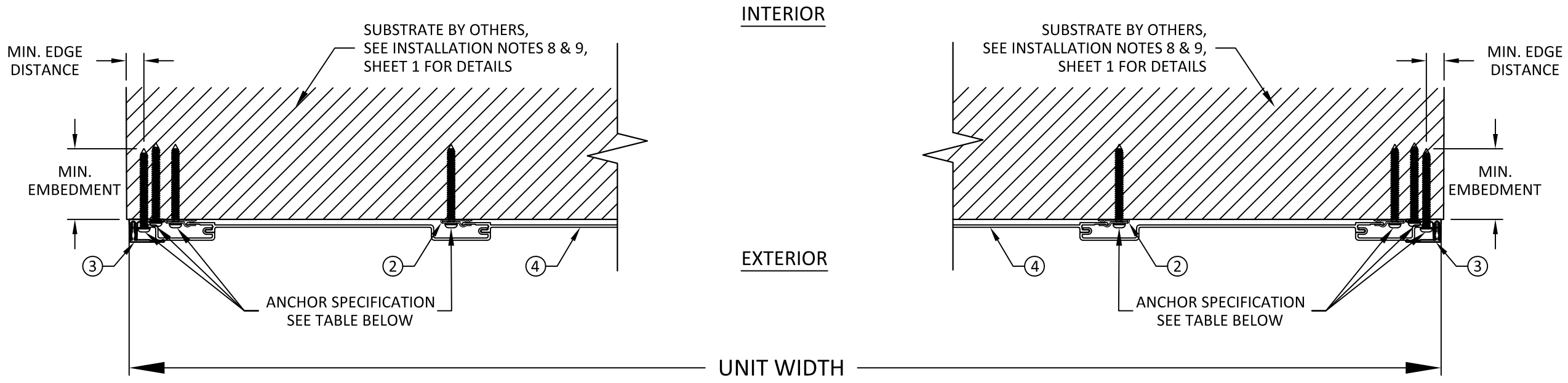
**A**  
**3** VERTICAL SECTION

c:\users\d\aniwata\building\_drops\_inc\building\_drops\_products\longboard\_architectural\_products\fbc-24-0532 - fbc submittal - board & batten plank lap\_siding\_plank\dwgs\lbd005.dwg 2/11/2025 8:30 AM

TITLE: BOARD AND BATTEN PLANK SYSTEM (HVHZ) HORIZONTAL SECTION AND ANCHOR DETAILS

PREPARED BY: **BD** BUILDING DROPS

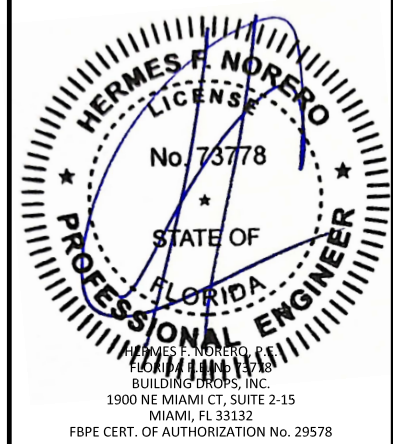
BUILDING DROPS, INC.  
1900 NE MIAMI CT, SUITE 2-15  
MIAMI, FL 33132  
PH: (954)399-8478  
FAX: (954)744-4738  
WEB: www.buildingdrops.com



**A**  
**4** HORIZONTAL SECTION

SUBSTRATE	ANCHOR DESCRIPTION	MIN. EMBEDMENT	MIN. EDGE DISTANCE
WOOD: MIN. S.G. = 0.55	#10 WOOD PAN HEAD SCREW	1.50"	0.50"
WOOD: MIN. 5/8" C/D GRADE PLYWOOD		0.25" PAST PLYWOOD STRUCTURE	1"
STEEL: MIN. 18 GA., MIN. F <sub>y</sub> =36 KSI	#10 SELF-DRILLING OR SELF-TAPPING PAN HEAD SCREW	3 THREADS PENETRATION PAST METAL STRUCTURE	0.75"
ALUM.: MIN. 1/8", MIN. 6063-T5			1.875"
CONCRETE: MIN. F'C = 3000 PSI	3/16" HEX HEAD ITW TAPCON	1"	4"
HOLLOW / GROUT-FILLED BLOCK PER C-90: MIN. F'C = 2000 PSI		1"	

THE INSTALLATION DETAILS DESCRIBED HEREIN ARE GENERIC AND MAY NOT REFLECT ACTUAL CONDITIONS FOR A SPECIFIC SITE. IF SITE CONDITIONS CAUSE INSTALLATION TO DEVIATE FROM THE REQUIREMENTS DETAILED HEREIN, A LICENSED ENGINEER OR ARCHITECT SHALL PREPARE SITE SPECIFIC DOCUMENTS FOR USE WITH THIS DOCUMENT.



FL #: **FL47291**

DATE: **01.20.25**

DWG. BY: **DB** CHK. BY: **HFN**

SCALE: **NTS**

DWG. #: **LBD005**

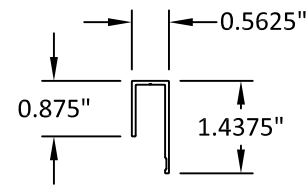
SHEET: **4**

OF 5

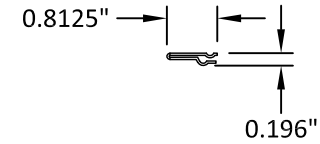
c:\users\d\aniwata\building\_drops, inc\building\_drops, inc\common\projects\longboard\_architectural\_products\fbc-24-0532 - fbc submittal - board & batten plank lap siding\_plank\dwg\lbd005.dwg 2/11/2025 8:30 AM

2/11/2025 8:30 AM

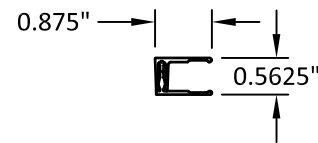
BILL OF MATERIALS		
PART NO.	DESCRIPTION	MATERIAL
1	CRAFTSMAN J-TRACK	ALUMINUM 6063-T5
2	QUICK-SCREEN CLIP	ALUMINUM 6063-T5
3	CRAFTSMAN TWO PIECE J-TRACK	ALUMINUM 6063-T5
4	7" BOARD AND BATTEN PLANK	ALUMINUM 6063-T5
5	BACK-TO-BACK STARTER	ALUMINUM 6063-T5
6	TRADITIONAL STARTER STRIP	ALUMINUM 6063-T5
7	TRADITIONAL CORNER SET	ALUMINUM 6063-T5



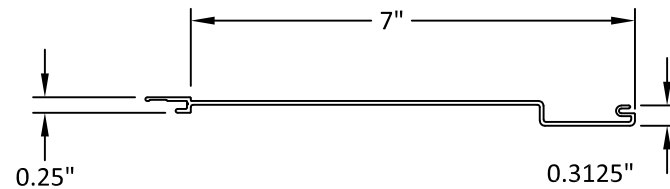
① CRAFTSMAN J-TRACK



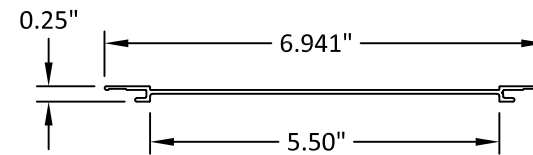
② QUICK-SCREEN CLIP



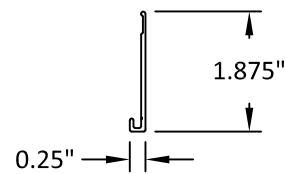
③ CRAFTSMAN TWO PIECE J-TRACK



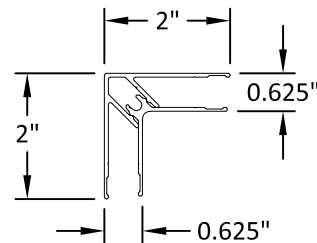
④ 7" BOARD AND BATTEN PLANK



⑤ BACK-TO-BACK STARTER



⑥ TRADITIONAL STARTER STRIP



⑦ TRADITIONAL CORNER SET

TITLE: BOARD AND BATTEN PLANK SYSTEM (HVHZ) BILL OF MATERIALS AND COMPONENTS

PREPARED BY: BUILDING DROPS, INC.  
1900 NE MIAMI CT, SUITE 2-15  
MIAMI, FL 33132  
PH: (954) 399-8478  
FAX: (954) 744-4738  
WEB: www.buildingdrops.com



REMARKS	BY	DATE

THE INSTALLATION DETAILS DESCRIBED HEREIN ARE GENERIC AND MAY NOT REFLECT ACTUAL CONDITIONS FOR A SPECIFIC SITE. IF SITE CONDITIONS CAUSE INSTALLATION TO DEVIATE FROM THE REQUIREMENTS DETAILED HEREIN, A LICENSED ENGINEER OR ARCHITECT SHALL PREPARE SITE SPECIFIC DOCUMENTS FOR USE WITH THIS DOCUMENT.



FL #:	<b>FL47291</b>
DATE:	<b>01.20.25</b>
DWG. BY:	<b>DB</b>
CHK. BY:	<b>HFN</b>
SCALE:	<b>NTS</b>
DWG. #:	<b>LBD005</b>
SHEET:	<b>5</b>

c:\users\d\wamiwata\building\_drops\_inc\building\_drops\_projects\longboard\_architectural\_products\fbc-24-0532 - fbc submittal - board & batten plank lap siding plank\dwgs\lbd005.dwg