

# LONGBOARD ARCHITECTURAL PRODUCTS

## TEXTURED PLANK WALL CLADDING SYSTEM

(HVHZ)

GENERAL NOTES:

- THE PRODUCT SHOWN HEREIN IS DESIGNED AND MANUFACTURED TO COMPLY WITH THE CURRENT FLORIDA BUILDING CODE (FBC), **INCLUDING** HVHZ AND HAS BEEN EVALUATED ACCORDING TO THE FOLLOWING:
  - TAS 202-94
  - TAS 203-94
  - ASTM E8-16
- ADEQUACY OF THE EXISTING STRUCTURAL CONCRETE/MASONRY AND 2X FRAMING AS A MAIN WIND FORCE RESISTING SYSTEM CAPABLE OF WITHSTANDING AND TRANSFERRING APPLIED PRODUCT LOADS TO THE FOUNDATION IS THE RESPONSIBILITY OF THE ENGINEER OR ARCHITECT OF RECORD FOR THE PROJECT OF INSTALLATION.
- 1X AND 2X MEMBERS (WHEN USED) SHALL BE DESIGNED AND ANCHORED TO PROPERLY TRANSFER ALL LOADS TO THE STRUCTURE. BUCK DESIGN AND INSTALLATION IS THE RESPONSIBILITY OF THE ENGINEER OR ARCHITECT OF RECORD FOR THE PROJECT OF INSTALLATION.
- THE INSTALLATION DETAILS DESCRIBED HEREIN ARE GENERIC AND MAY NOT REFLECT ACTUAL CONDITIONS FOR A SPECIFIC SITE. IF SITE CONDITIONS CAUSE INSTALLATION TO DEVIATE FROM THE REQUIREMENTS DETAILED HEREIN, A LICENSED ENGINEER OR ARCHITECT SHALL PREPARE SITE SPECIFIC DOCUMENTS FOR USE WITH THIS DOCUMENT.
- ALUMINUM SIDING MEETS THE REQUIREMENTS OF THE CURRENT FBC. APPLICATION OF ALUMINUM SIDING SHALL MEET REQUIREMENTS OF THE CURRENT FBC.
- ALUMINUM SIDING SPECIFICATIONS:
  - MATERIAL: 6063-T5
  - MINIMUM THICKNESS: 0.0358"
- INSTALLATION OF SIDING ACCESSORIES SUCH AS TRIM COMPONENTS SHALL BE DONE IN ACCORDANCE WITH THE FLORIDA BUILDING CODE AND THE MANUFACTURER'S INSTRUCTIONS.

INSTALLATION NOTES:

- ONE (1) INSTALLATION ANCHOR IS REQUIRED AT EACH ANCHOR LOCATION SHOWN.
- THE NUMBER OF INSTALLATION ANCHORS DEPICTED IS THE MINIMUM NUMBER OF ANCHORS TO BE USED FOR PRODUCT INSTALLATION.
- INSTALL INDIVIDUAL INSTALLATION ANCHORS WITHIN A TOLERANCE OF ±1/2 INCH OF THE DEPICTED LOCATION IN THE ANCHOR LAYOUT DETAIL (I.E., WITHOUT CONSIDERATION OF TOLERANCES). TOLERANCES ARE NOT CUMULATIVE FROM ONE INSTALLATION ANCHOR TO THE NEXT.
- MINIMUM EMBEDMENT AND EDGE DISTANCE EXCLUDE WALL FINISHES, INCLUDING BUT NOT LIMITED TO STUCCO, FOAM, BRICK VENEER, SHEATHING AND SIDING.
- INSTALLATION ANCHORS AND ASSOCIATED HARDWARE MUST BE MADE OF CORROSION RESISTANT MATERIAL OR HAVE A CORROSION RESISTANT COATING.
- FOR HOLLOW BLOCK AND GROUT FILLED BLOCK, DO NOT INSTALL INSTALLATION ANCHORS INTO MORTAR JOINTS. EDGE DISTANCE IS MEASURED FROM FREE EDGE OF BLOCK OR EDGE OF MORTAR JOINT INTO FACE SHELL OF BLOCK.
- INSTALLATION ANCHORS SHALL BE INSTALLED IN ACCORDANCE WITH ANCHOR MANUFACTURER'S INSTALLATION INSTRUCTIONS, AND ANCHORS SHALL NOT BE USED IN SUBSTRATES WITH STRENGTHS LESS THAN THE MINIMUM STRENGTH SPECIFIED BY THE ANCHOR MANUFACTURER.
- PRODUCT SHALL BE INSTALLED IN FRONT OF CONSTRUCTION THAT COMPLIES WITH SECTION 1626.4 OF THE FLORIDA BUILDING CODE.
- INSTALLATION ANCHOR CAPACITIES FOR PRODUCTS HEREIN ARE BASED ON SUBSTRATE MATERIALS WITH THE FOLLOWING PROPERTIES:
  - WOOD - MINIMUM SPECIFIC GRAVITY OF 0.55.
  - WOOD- MINIMUM 5/8" C/D GRADE PLYWOOD.
  - STEEL - MINIMUM YIELD STRENGTH OF 36 KSI. MINIMUM 18 GA. WALL THICKNESS.
  - ALUMINUM - MINIMUM 1/8 INCH THICK 6063-T5 ALUMINUM.
  - CONCRETE -MINIMUM COMPRESSIVE STRENGTH OF 3000 PSI.
  - MASONRY - CMU UNIT STRENGTH CONFORMS TO ASTM C-90, WITH MIN. COMPRESSIVE STRENGTH OF 2000 PSI AND GROUT CONFORMS TO ASTM C 476, MIN. GROUT COMPRESSIVE STRENGTH OF 2000 PSI.

TABLE OF CONTENTS	
SHEET	SHEET DESCRIPTION
1	GENERAL NOTES, INSTALLATION NOTES AND DESIGN PRESSURE TABLES
2	ELEVATION AND ANCHOR LAYOUT
3	ELEVATION AND ANCHOR LAYOUT
4	ELEVATION AND ANCHOR LAYOUT
5	ELEVATION AND ANCHOR LAYOUT
6	VERTICAL SECTIONS
7	VERTICAL SECTIONS
8	HORIZONTAL SECTIONS
9	HORIZONTAL SECTIONS
10	BILL OF MATERIALS, COMPONENTS, & ANCHOR SCHEDULE

DESIGN PRESSURE TABLE						
HORIZONTAL O.C. SPACING (IN)		ALLOWABLE DESIGN PRESSURE (PSF)				
		WOOD	STEEL	ALUM.	CONCRETE	MASONRY
6" SINGLE BEVEL SIDING PLANK	8	120.0	120.0	120.0	120.0	120.0
	12	120.0	120.0	120.0	120.0	120.0
	16	120.0	120.0	120.0	120.0	93.0

DESIGN PRESSURE TABLE						
HORIZONTAL O.C. SPACING (IN)		ALLOWABLE DESIGN PRESSURE (PSF)				
		WOOD	STEEL	ALUM.	CONCRETE	MASONRY
6" TRIPLE BEVEL SIDING PLANK	8	120.0	120.0	120.0	120.0	120.0
	12	120.0	120.0	120.0	120.0	120.0
	16	120.0	120.0	120.0	120.0	93.0

DESIGN PRESSURE TABLE						
HORIZONTAL O.C. SPACING (IN)		ALLOWABLE DESIGN PRESSURE (PSF)				
		WOOD	STEEL	ALUM.	CONCRETE	MASONRY
8" CASTELLATION SIDING PLANK	8	120.0	120.0	120.0	120.0	120.0
	12	120.0	120.0	120.0	120.0	93.0
	16	120.0	120.0	120.0	120.0	69.8

DESIGN PRESSURE TABLE						
HORIZONTAL O.C. SPACING (IN)		ALLOWABLE DESIGN PRESSURE (PSF)				
		WOOD	STEEL	ALUM.	CONCRETE	MASONRY
4" CASTELLATION SIDING PLANK	8	120.0	120.0	120.0	120.0	120.0
	12	120.0	120.0	120.0	120.0	120.0
	16	120.0	120.0	120.0	120.0	120.0



1777 CLEARBROOK RD #120  
ABBOTSFORD, BC V2T 5X5, CANADA  
PH: (800) 604-0343

TITLE: TEXTURED PLANK WALL CLADDING SYSTEM (HVHZ)

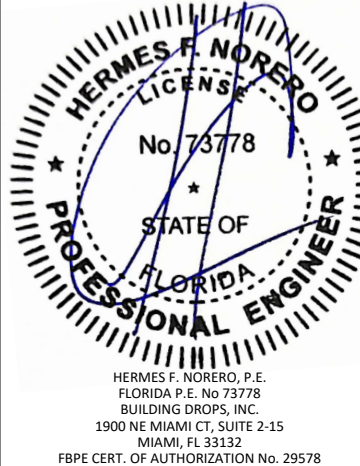
GENERAL NOTES, INSTALLATION NOTES & DESIGN PRESSURE TABLES

PREPARED BY:

BUILDING DROPS, INC.  
1900 NE MIAMI CT, SUITE 2-15  
MIAMI, FL 33132  
PH: (954)399-8478  
FAX: (954)744-4738  
WEB: www.buildingdrops.com

REMARKS	BY	DATE

THE INSTALLATION DETAILS DESCRIBED HEREIN ARE GENERIC AND MAY NOT REFLECT ACTUAL CONDITIONS FOR A SPECIFIC SITE. IF SITE CONDITIONS CAUSE INSTALLATION TO DEVIATE FROM THE REQUIREMENTS DETAILED HEREIN, A LICENSED ENGINEER OR ARCHITECT SHALL PREPARE SITE SPECIFIC DOCUMENTS FOR USE WITH THIS DOCUMENT.



FL #: **FL41934**

DATE: **09.02.25**

DWG. BY: **HJ**      CHK. BY: **HFN**

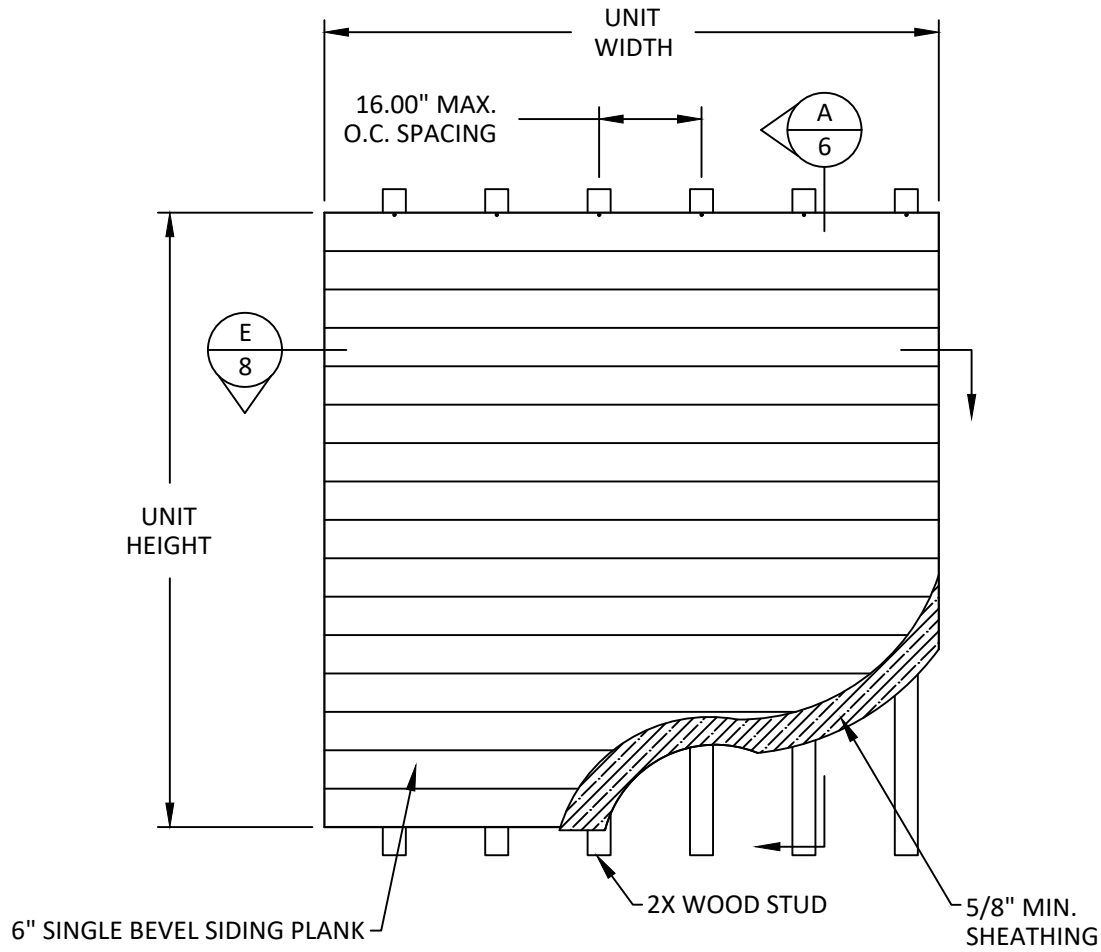
SCALE: **NTS**

DWG. #: **LBD007**

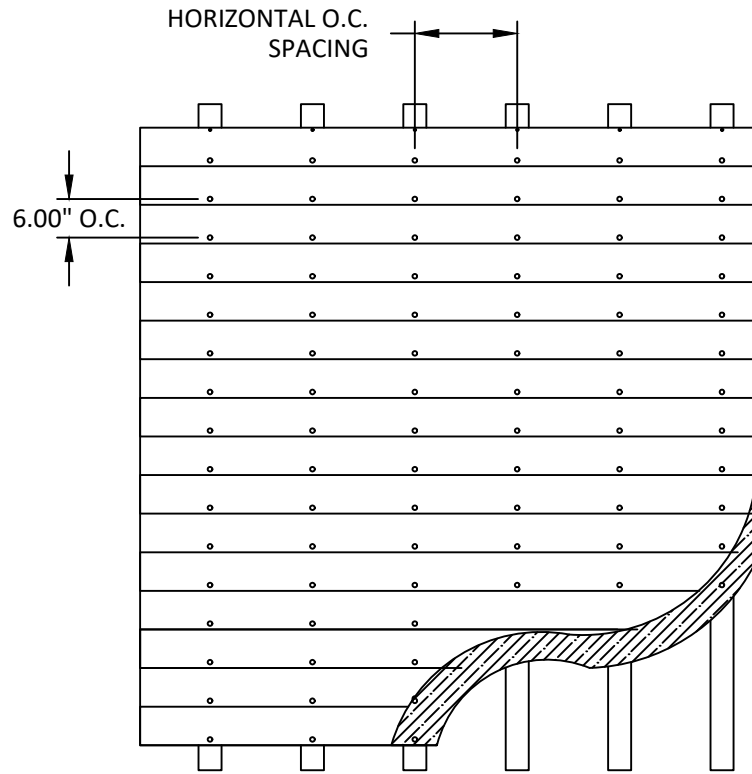
SHEET: **1**

OF 10

c:\users\harley\my\building drops, inc\building drops landing - common\projects\longboard architectural products\lbc-25-0267 - fbc submittal - textured plank wall cladding\dwgs\lbd007.dwg 9/8/2025 5:54 PM



SINGLE BEVEL SIDING PLANK ELEVATION



SINGLE BEVEL SIDING PLANK ANCHOR LAYOUT

NOTE: SEE DESIGN PRESSURE TABLE ON SHEET 1 FOR HORIZONTAL O.C. SPACING



1777 CLEARBROOK RD #120  
ABBOTSFORD, BC V2T 5X5, CANADA  
PH: (800) 604-0343

TITLE: TEXTURED PLANK WALL  
CLADDING SYSTEM  
(HVHZ)

ELEVATION AND ANCHOR LAYOUT

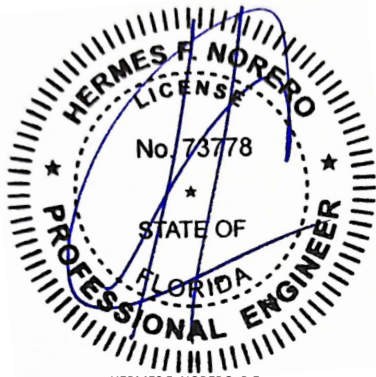
PREPARED BY:

BUILDING DROPS, INC.  
1900 NE MIAMI CT, SUITE 2-15  
MIAMI, FL 33132  
PH: (954)399-8478  
FAX: (954)744-4738  
WEB: www.buildingdrops.com



REMARKS	BY	DATE

THE INSTALLATION DETAILS DESCRIBED HEREIN ARE GENERIC AND MAY NOT REFLECT ACTUAL CONDITIONS FOR A SPECIFIC SITE. IF SITE CONDITIONS CAUSE INSTALLATION TO DEVIATE FROM THE REQUIREMENTS DETAILED HEREIN, A LICENSED ENGINEER OR ARCHITECT SHALL PREPARE SITE SPECIFIC DOCUMENTS FOR USE WITH THIS DOCUMENT.



HERMES F. NORERO, P.E.  
FLORIDA P.E. No. 73778  
BUILDING DROPS, INC.  
1900 NE MIAMI CT, SUITE 2-15  
MIAMI, FL 33132  
FBPE CERT. OF AUTHORIZATION No. 29578

FL #: FL41934

DATE: 09.02.25

DWG. BY:  
HJ

CHK. BY:  
HFN

SCALE: NTS

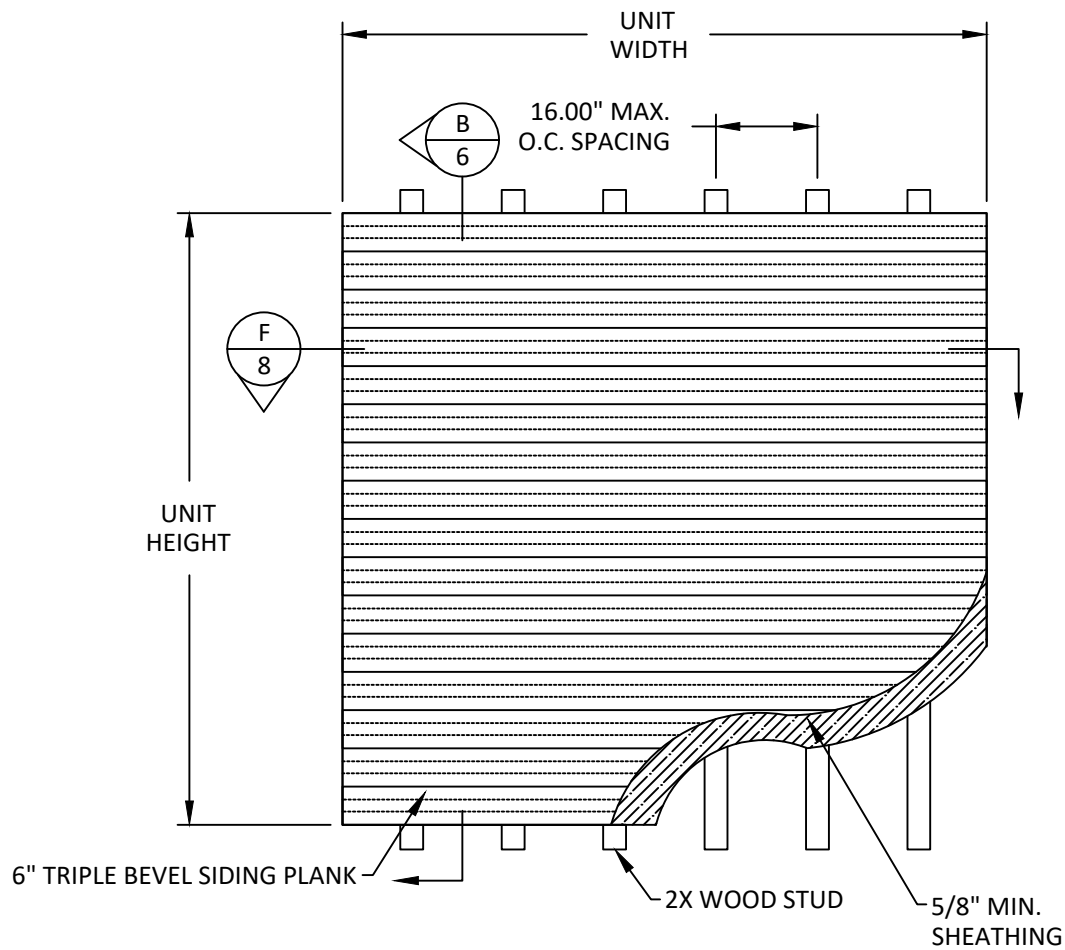
DWG. #: LBD007

SHEET:

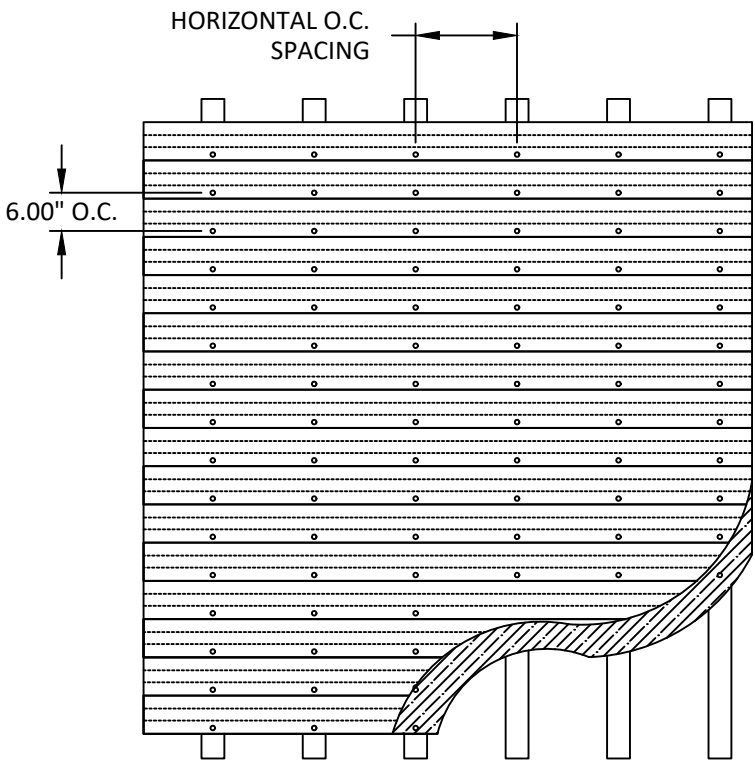
2

OF 10

c:\users\harley\my\building drops, inc\building drops landing - common\projects\longboard architectural products\fbc-25-0267 - fbc submittal - textured plank wall cladding.dwg  
9/8/2025 5:54 PM



6" TRIPLE BEVEL SIDING PLANK ELEVATION



6" TRIPLE BEVEL SIDING PLANK ANCHOR LAYOUT

NOTE: SEE DESIGN PRESSURE TABLE ON SHEET 1 FOR HORIZONTAL O.C. SPACING



1777 CLEARBROOK RD #120  
ABBOTSFORD, BC V2T 5X5, CANADA  
PH: (800) 604-0343

TITLE: TEXTURED PLANK WALL  
CLADDING SYSTEM  
(HVHZ)

ELEVATION AND ANCHOR LAYOUT

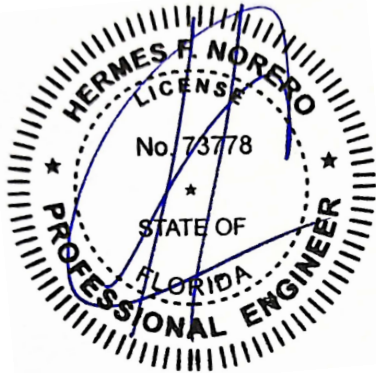
PREPARED BY:

BUILDING DROPS, INC.  
1900 NE MIAMI CT, SUITE 2-15  
MIAMI, FL 33132  
PH: (954)399-8478  
FAX: (954)744-4738  
WEB: www.buildingdrops.com



REMARKS	BY	DATE

THE INSTALLATION DETAILS DESCRIBED HEREIN ARE GENERIC AND MAY NOT REFLECT ACTUAL CONDITIONS FOR A SPECIFIC SITE. IF SITE CONDITIONS CAUSE INSTALLATION TO DEVIATE FROM THE REQUIREMENTS DETAILED HEREIN, A LICENSED ENGINEER OR ARCHITECT SHALL PREPARE SITE SPECIFIC DOCUMENTS FOR USE WITH THIS DOCUMENT.



HERMES F. NORERO, P.E.  
FLORIDA P.E. No. 73778  
BUILDING DROPS, INC.  
1900 NE MIAMI CT, SUITE 2-15  
MIAMI, FL 33132  
FBPE CERT. OF AUTHORIZATION No. 29578

FL #: FL41934

DATE: 09.02.25

DWG. BY:  
HJ

CHK. BY:  
HFN

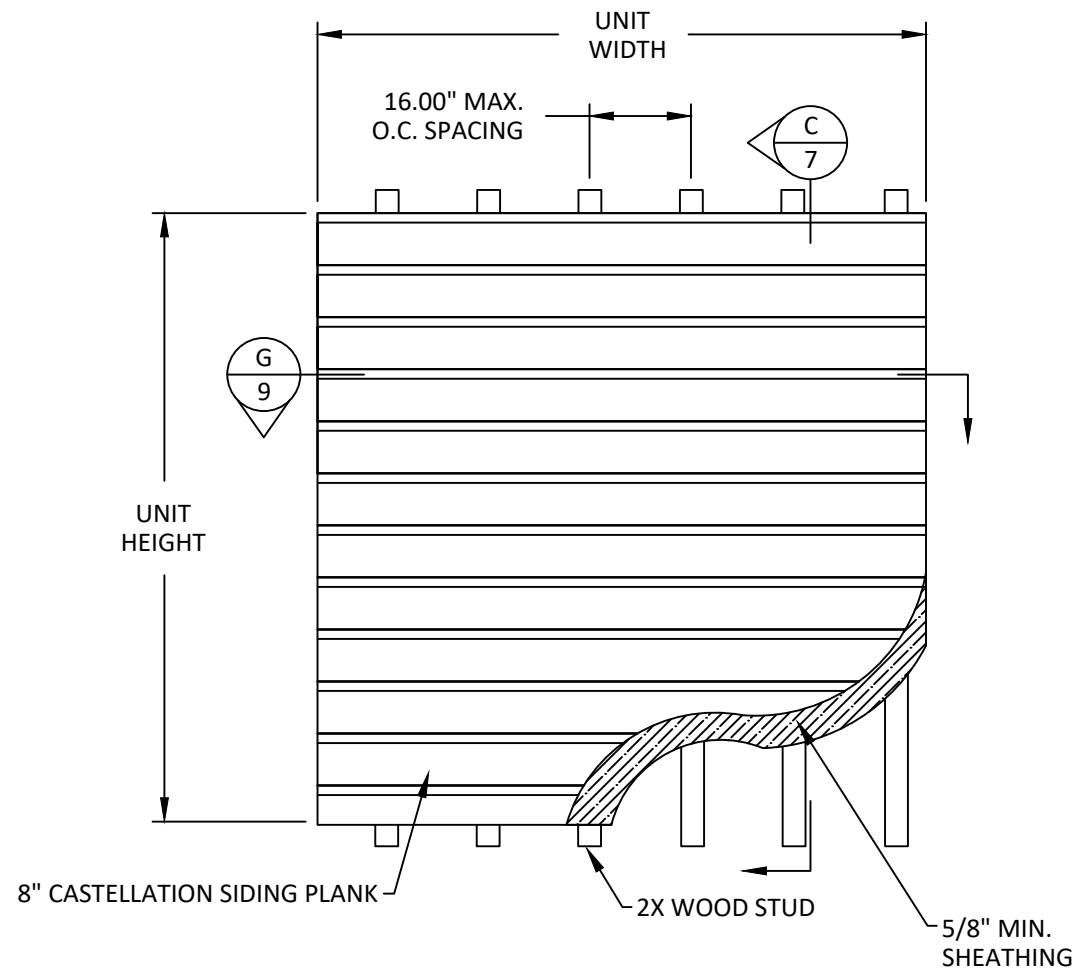
SCALE: NTS

DWG. #: LBD007

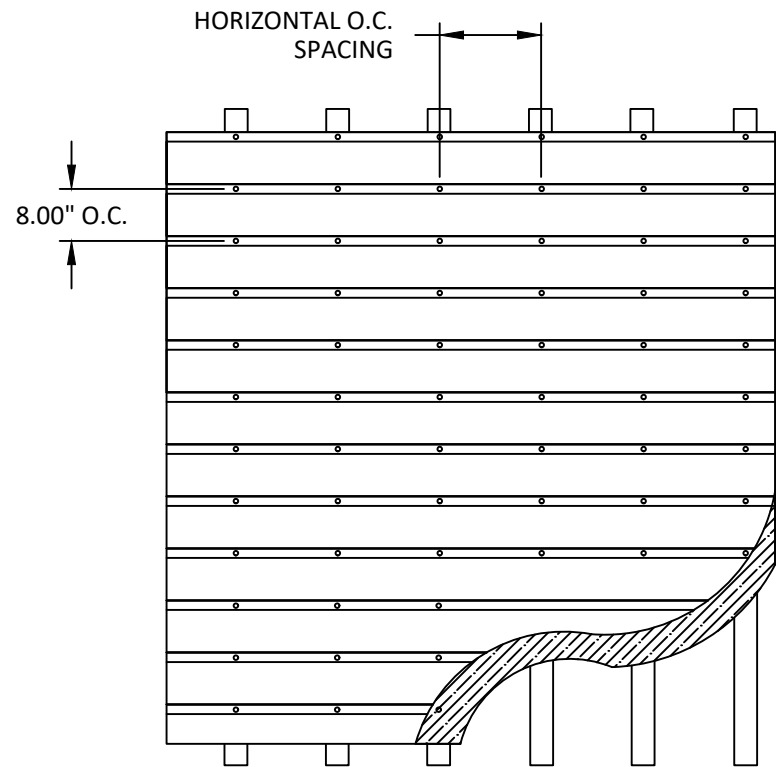
SHEET:

3

c:\users\harley\my\building drops, inc\building drops landing - common\projects\longboard architectural products\lbc-25-0267 - fbc submittal - textured plank wall cladding\dwgs\lbd007.dwg 9/8/2025 5:54 PM



8" CASTELLATION SIDING PLANK ELEVATION



8" CASTELLATION SIDING PLANK ANCHOR LAYOUT

NOTE: SEE DESIGN PRESSURE TABLE ON SHEET 1 FOR HORIZONTAL O.C. SPACING



1777 CLEARBROOK RD #120  
ABBOTSFORD, BC V2T 5X5, CANADA  
PH: (800) 604-0343

TITLE: TEXTURED PLANK WALL  
CLADDING SYSTEM  
(HVHZ)

ELEVATION AND ANCHOR LAYOUT

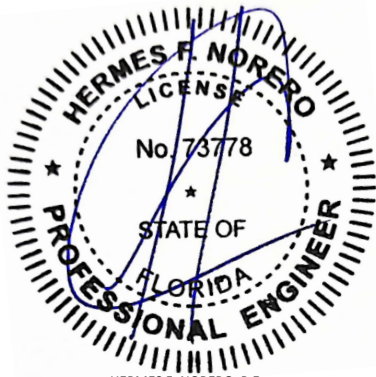
PREPARED BY:

BUILDING DROPS, INC.  
1900 NE MIAMI CT, SUITE 2-15  
MIAMI, FL 33132  
PH: (954)399-8478  
FAX: (954)744-4738  
WEB: www.buildingdrops.com



REMARKS	BY	DATE

THE INSTALLATION DETAILS DESCRIBED HEREIN ARE GENERIC AND MAY NOT REFLECT ACTUAL CONDITIONS FOR A SPECIFIC SITE. IF SITE CONDITIONS CAUSE INSTALLATION TO DEVIATE FROM THE REQUIREMENTS DETAILED HEREIN, A LICENSED ENGINEER OR ARCHITECT SHALL PREPARE SITE SPECIFIC DOCUMENTS FOR USE WITH THIS DOCUMENT.



HERMES F. NORERO, P.E.  
FLORIDA P.E. No. 73778  
BUILDING DROPS, INC.  
1900 NE MIAMI CT, SUITE 2-15  
MIAMI, FL 33132  
FBPE CERT. OF AUTHORIZATION No. 29578

FL #: FL41934

DATE: 09.02.25

DWG. BY: HJ

CHK. BY: HFN

SCALE: NTS

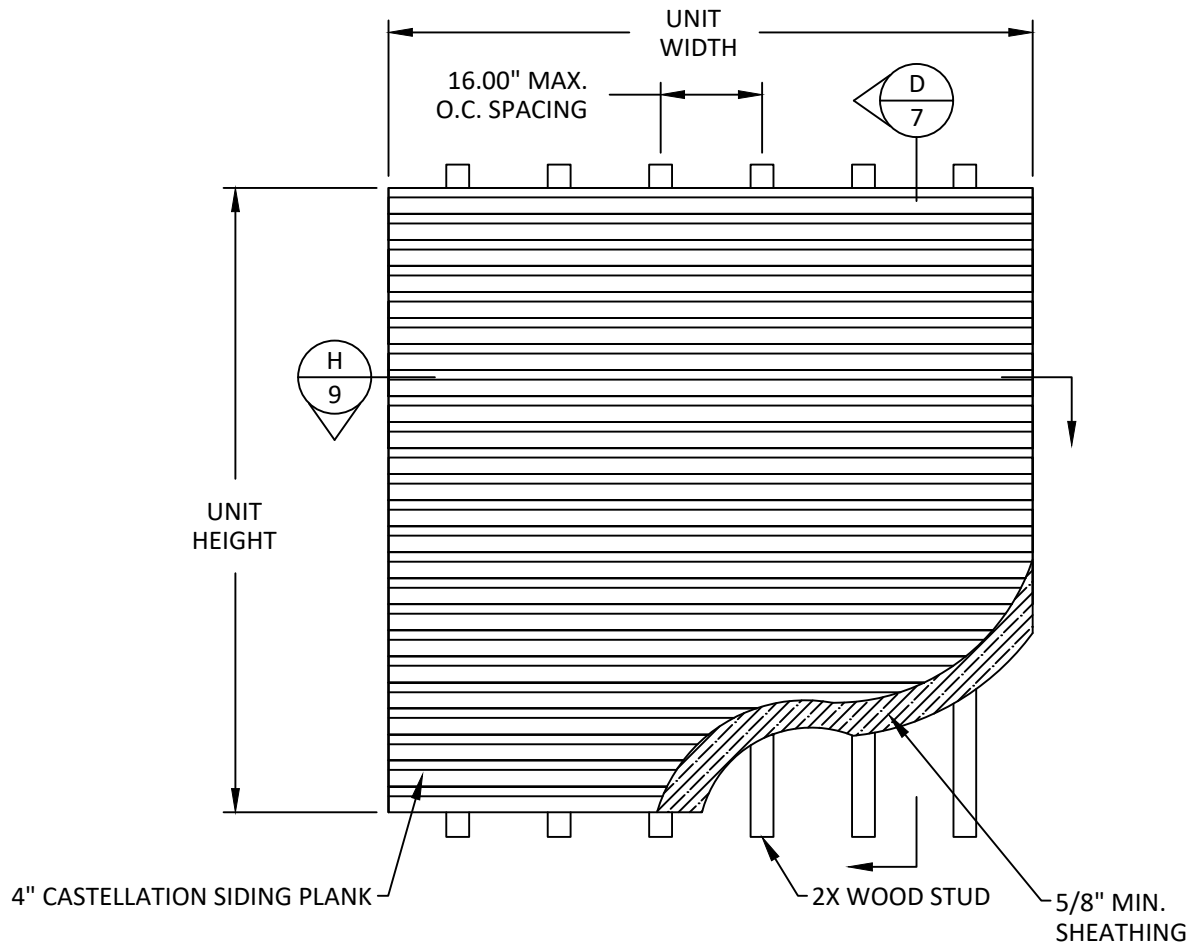
DWG. #: LBD007

SHEET:

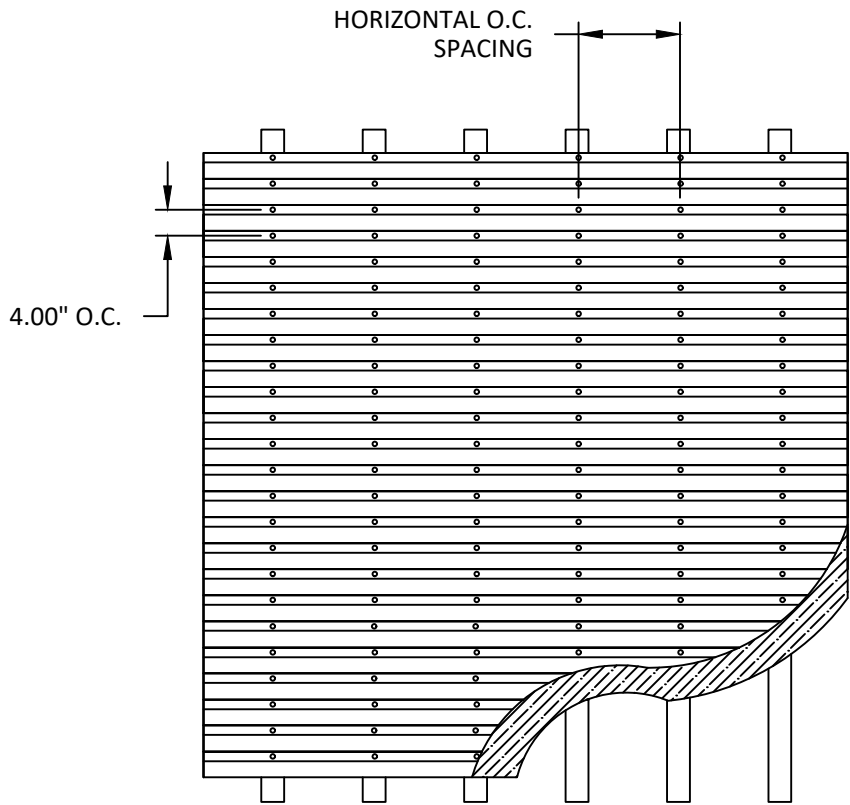
4

OF 10

c:\users\harley\my\building drops, inc\building drops landing - common\projects\longboard architectural products\lbc-25-0267 - fbc submittal - textured plank wall cladding.dwg, lbc007.dwg, 9/8/2025 5:54 PM



4" CASTELLATION SIDING PLANK ELEVATION



4" CASTELLATION SIDING PLANK ANCHOR LAYOUT

NOTE: SEE DESIGN PRESSURE TABLE ON SHEET 1 FOR HORIZONTAL O.C. SPACING



1777 CLEARBROOK RD #120  
ABBOTSFORD, BC V2T 5X5, CANADA  
PH: (800) 604-0343

TITLE: TEXTURED PLANK WALL  
CLADDING SYSTEM  
(HVHZ)

ELEVATION AND ANCHOR LAYOUT

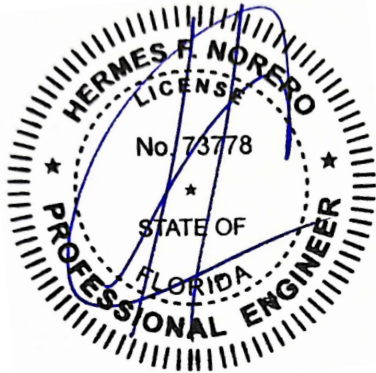
PREPARED BY:

BUILDING DROPS, INC.  
1900 NE MIAMI CT, SUITE 2-15  
MIAMI, FL 33132  
PH: (954)399-8478  
FAX: (954)744-4738  
WEB: www.buildingdrops.com



REMARKS	BY	DATE

THE INSTALLATION DETAILS DESCRIBED HEREIN ARE GENERIC AND MAY NOT REFLECT ACTUAL CONDITIONS FOR A SPECIFIC SITE. IF SITE CONDITIONS CAUSE INSTALLATION TO DEVIATE FROM THE REQUIREMENTS DETAILED HEREIN, A LICENSED ENGINEER OR ARCHITECT SHALL PREPARE SITE SPECIFIC DOCUMENTS FOR USE WITH THIS DOCUMENT.



HERMES F. NORERO, P.E.  
FLORIDA P.E. No. 73778  
BUILDING DROPS, INC.  
1900 NE MIAMI CT, SUITE 2-15  
MIAMI, FL 33132  
FBPE CERT. OF AUTHORIZATION No. 29578

FL #: FL41934

DATE: 09.02.25

DWG. BY:  
HJ

CHK. BY:  
HFN

SCALE: NTS

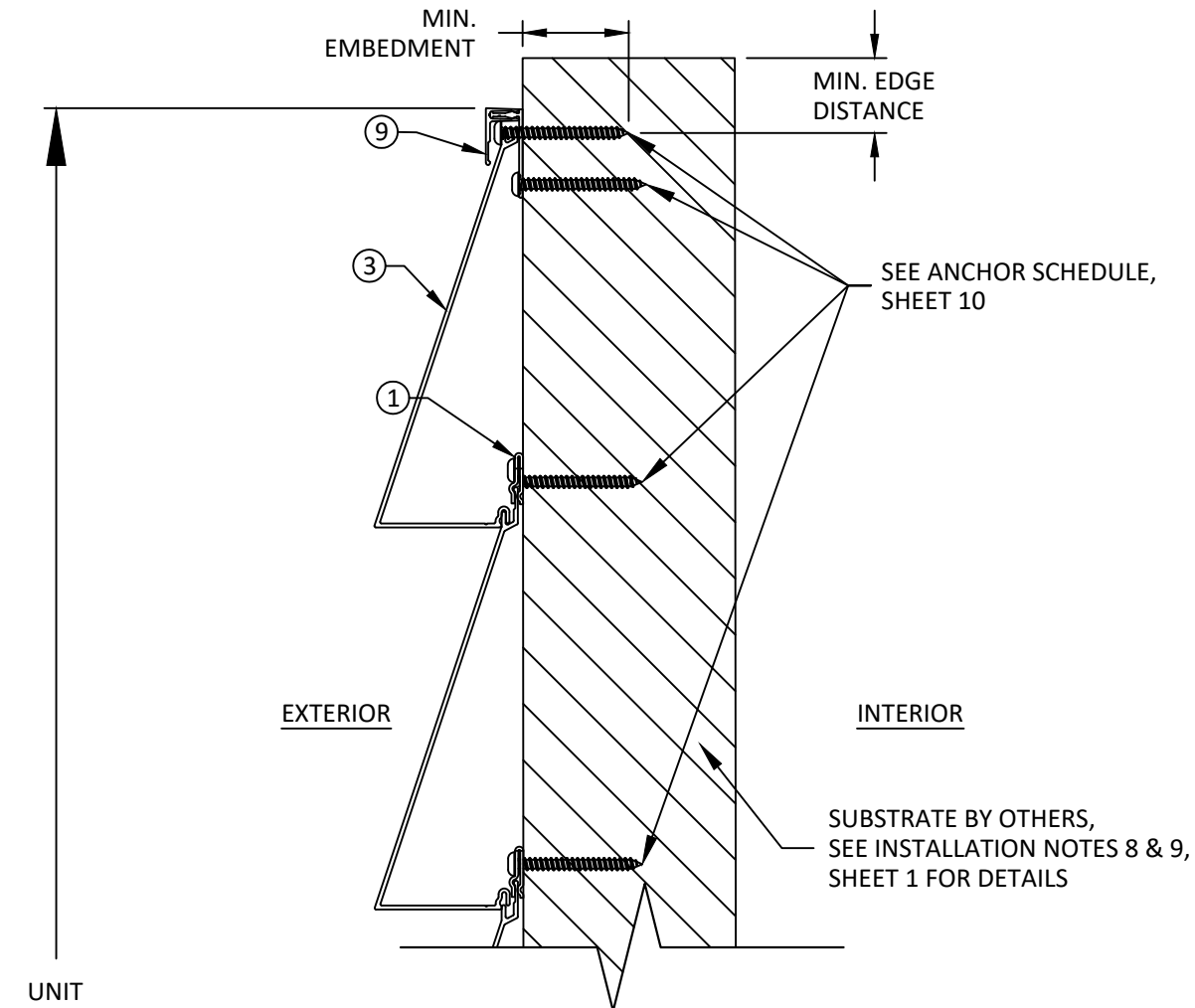
DWG. #: LBD007

SHEET:

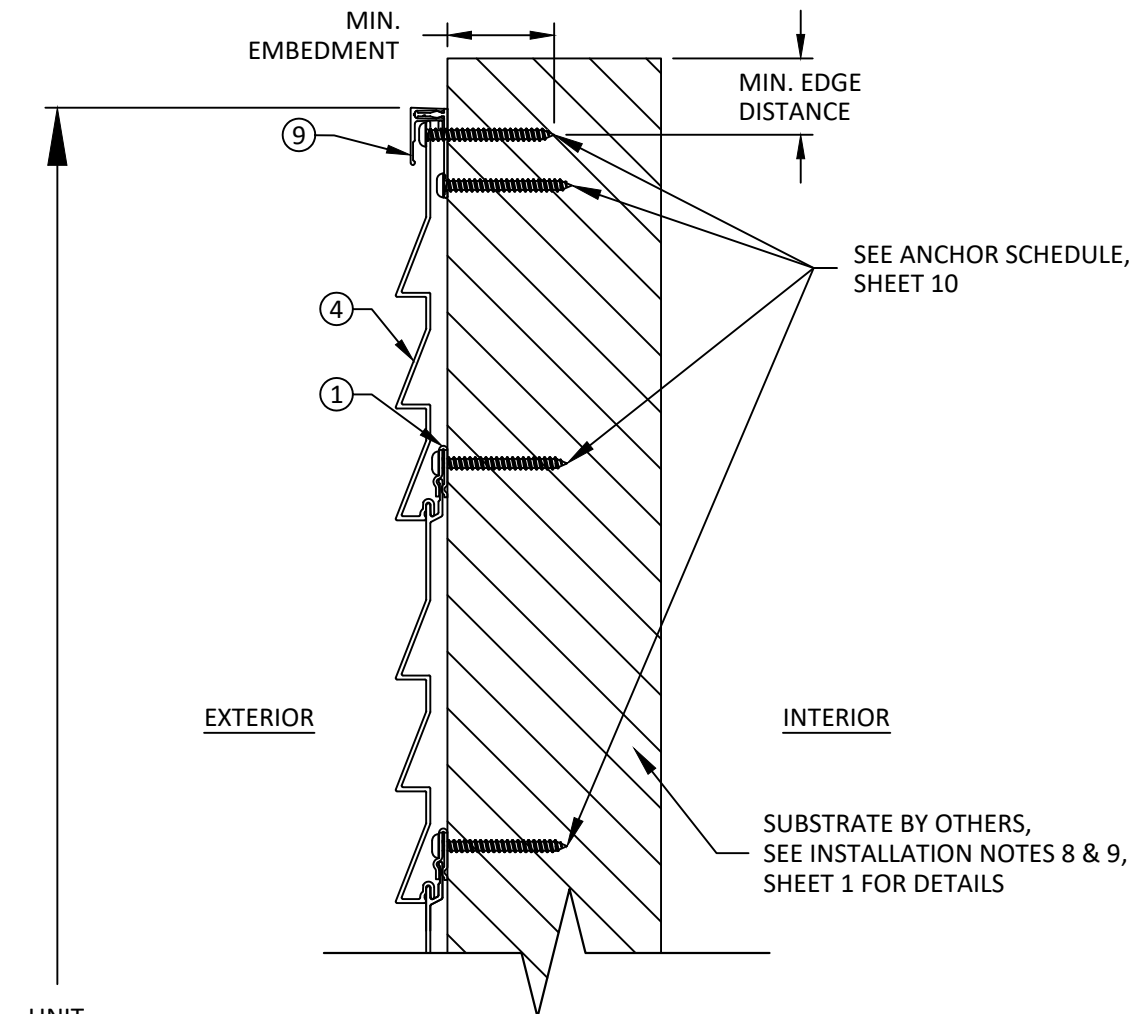
5



c:\users\harley\my\building drops, inc\building drops landing - common\projects\longboard architectural products\lbc-25-0267 - fbc submittal - textured plank wall cladding\dwgs\lbd007.dwg 9/8/2025 5:54 PM



**A**  
**6** VERTICAL SECTION  
6" SINGLE BEVEL SIDING PLANK



**B**  
**6** VERTICAL SECTION  
6" TRIPLE BEVEL SIDING PLANK



1777 CLEARBROOK RD #120  
ABBOTSFORD, BC V2T 5X5, CANADA  
PH: (800) 604-0343

TITLE: TEXTURED PLANK WALL  
CLADDING SYSTEM  
(HVHZ)

VERTICAL SECTIONS

PREPARED BY:

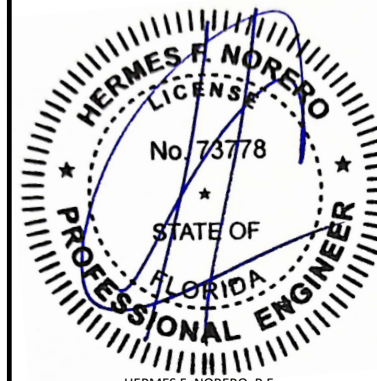
BUILDING DROPS, INC.  
1900 NE MIAMI CT, SUITE 2-15  
MIAMI, FL 33132

PH: (554)399-8478  
FAX: (954)744-4738  
WEB: www.buildingdrops.com



REMARKS	BY	DATE

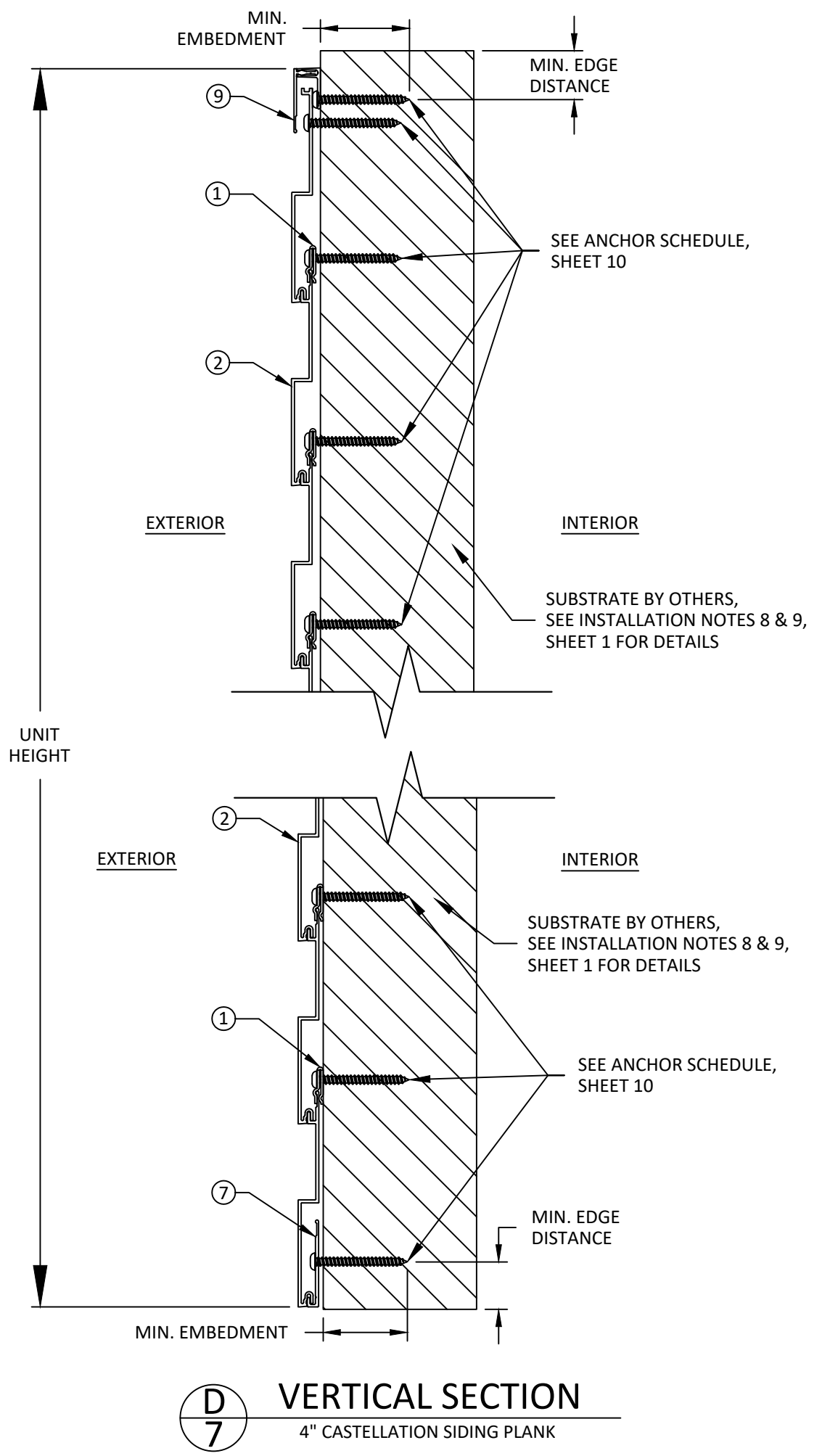
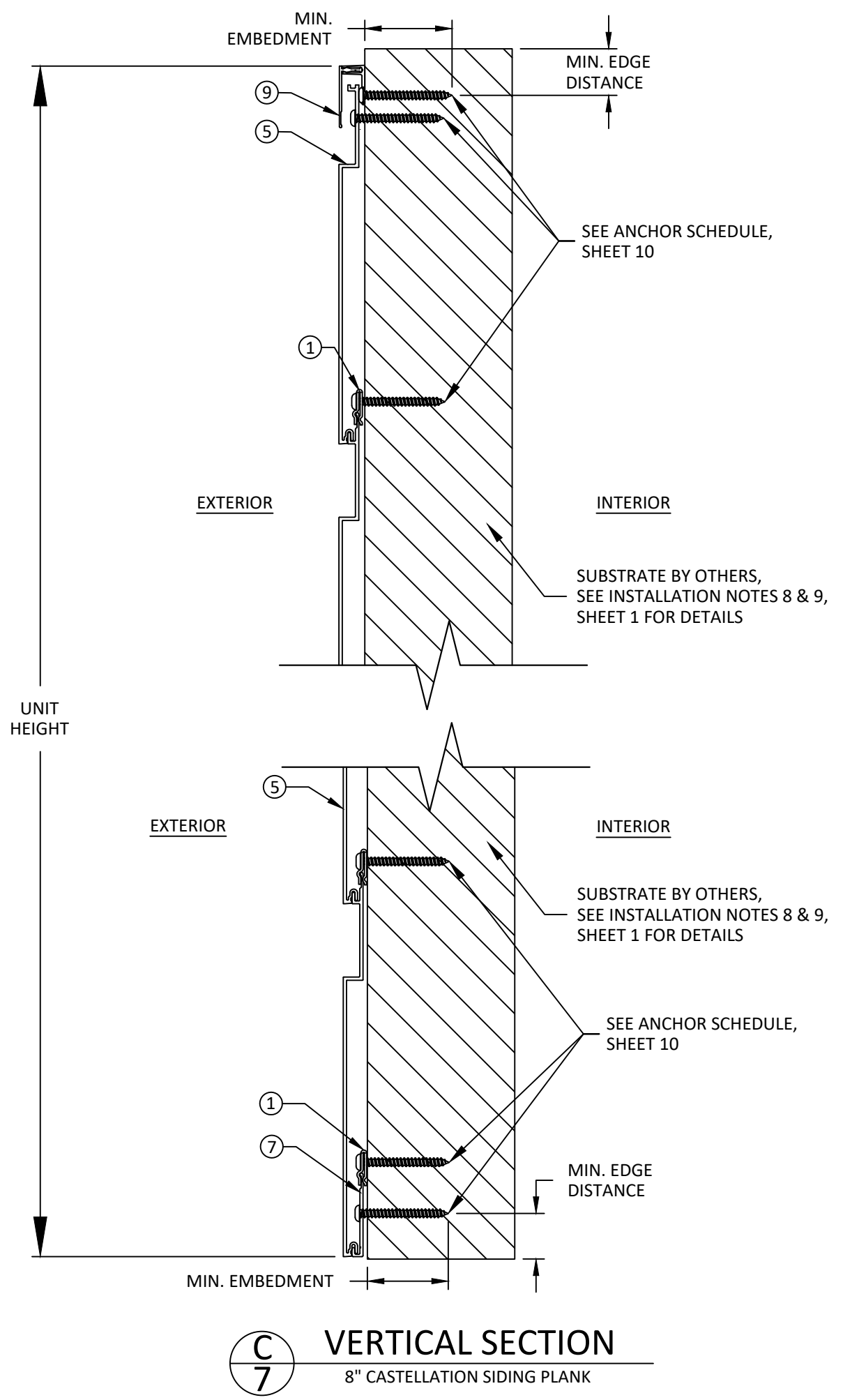
THE INSTALLATION DETAILS DESCRIBED HEREIN ARE GENERIC AND MAY NOT REFLECT ACTUAL CONDITIONS FOR A SPECIFIC SITE. IF SITE CONDITIONS CAUSE INSTALLATION TO DEVIATE FROM THE REQUIREMENTS DETAILED HEREIN, A LICENSED ENGINEER OR ARCHITECT SHALL PREPARE SITE SPECIFIC DOCUMENTS FOR USE WITH THIS DOCUMENT.



HERMES F. NORERO, P.E.  
FLORIDA P.E. No. 73778  
BUILDING DROPS, INC.  
1900 NE MIAMI CT, SUITE 2-15  
MIAMI, FL 33132  
FBPE CERT. OF AUTHORIZATION No. 29578

FL #:	FL41934
DATE:	09.02.25
DWG. BY:	CHK. BY:
HJ	HFN
SCALE:	NTS
DWG. #:	LBD007
SHEET:	6

c:\users\harley\my\building drops, inc\building drops landing - common\projects\longboard architectural products\lbc-25-0267 - fbc submittal - textured plank wall cladding\dwgs\lbd007.dwg 9/8/2025 5:54 PM



1777 CLEARBROOK RD #120  
ABBOTSFORD, BC V2T 5X5, CANADA  
PH: (800) 604-0343

TITLE: TEXTURED PLANK WALL  
CLADDING SYSTEM  
(HVHZ)

VERTICAL SECTIONS

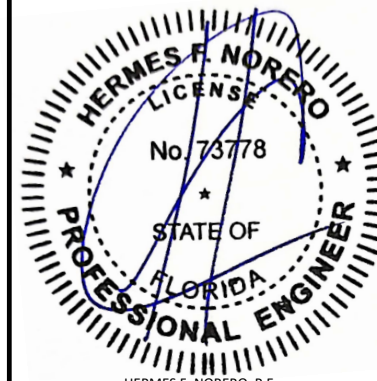
PREPARED BY:

BUILDING DROPS, INC.  
1900 NE MIAMI CT, SUITE 2-15  
MIAMI, FL 33132  
PH: (554)399-8478  
FAX: (954)744-4738  
WEB: www.buildingdrops.com



REMARKS	BY	DATE

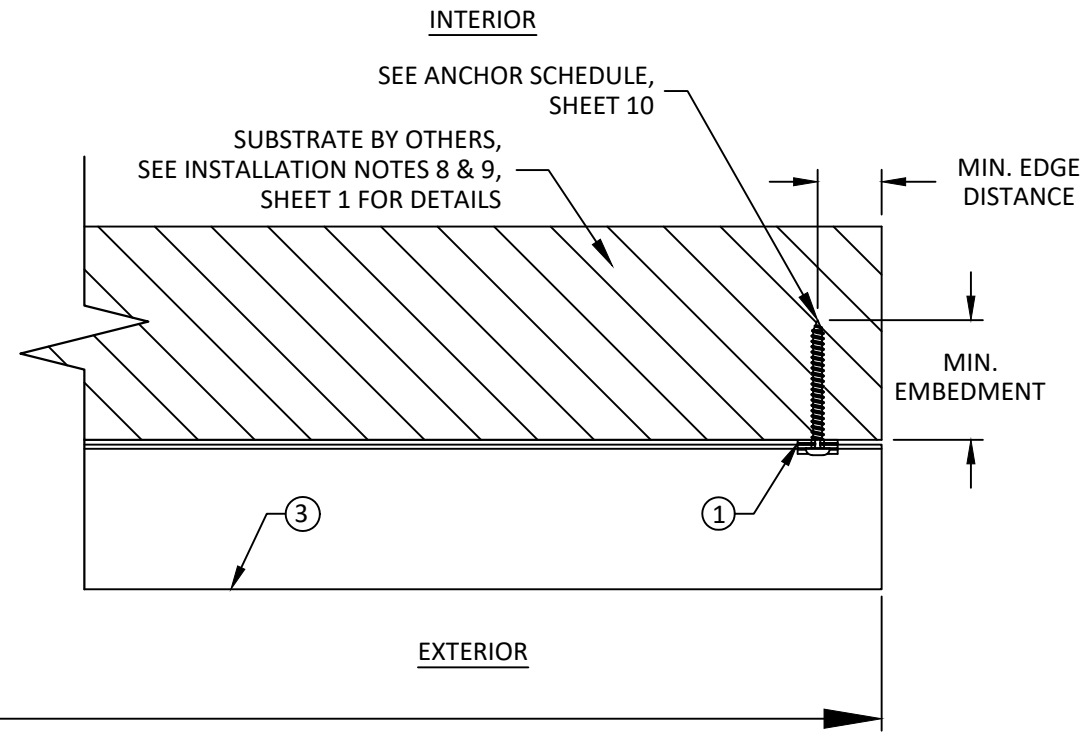
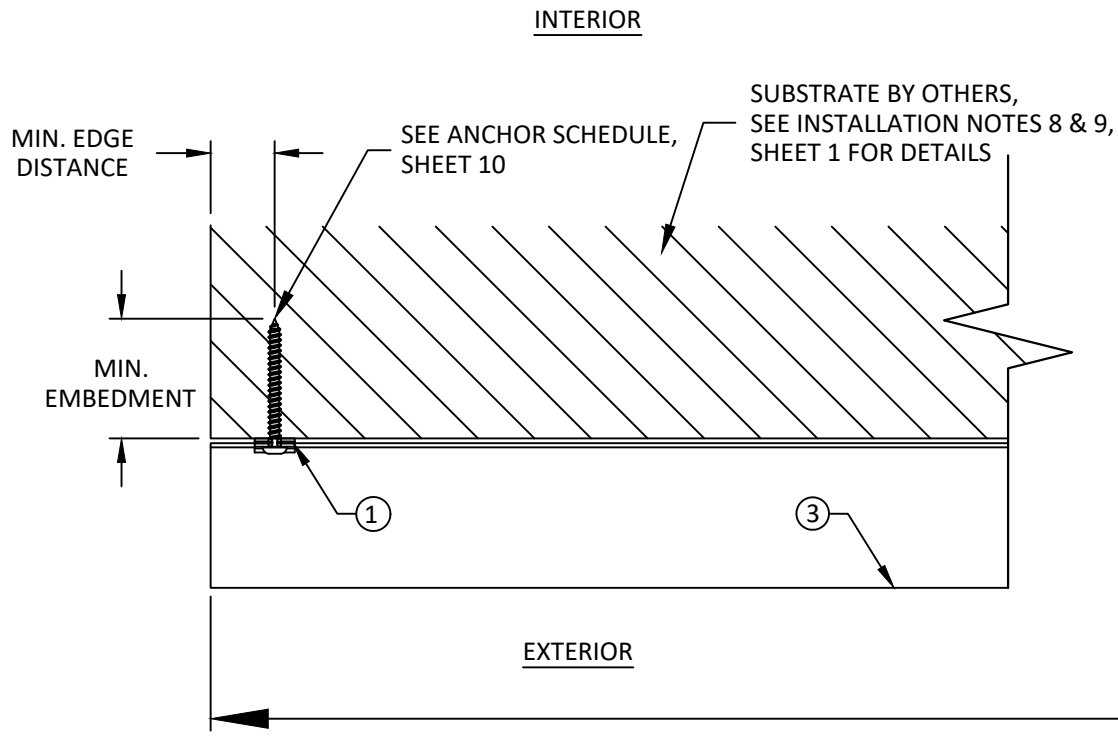
THE INSTALLATION DETAILS DESCRIBED HEREIN ARE GENERIC AND MAY NOT REFLECT ACTUAL CONDITIONS FOR A SPECIFIC SITE. IF SITE CONDITIONS CAUSE INSTALLATION TO DEVIATE FROM THE REQUIREMENTS DETAILED HEREIN, A LICENSED ENGINEER OR ARCHITECT SHALL PREPARE SITE SPECIFIC DOCUMENTS FOR USE WITH THIS DOCUMENT.



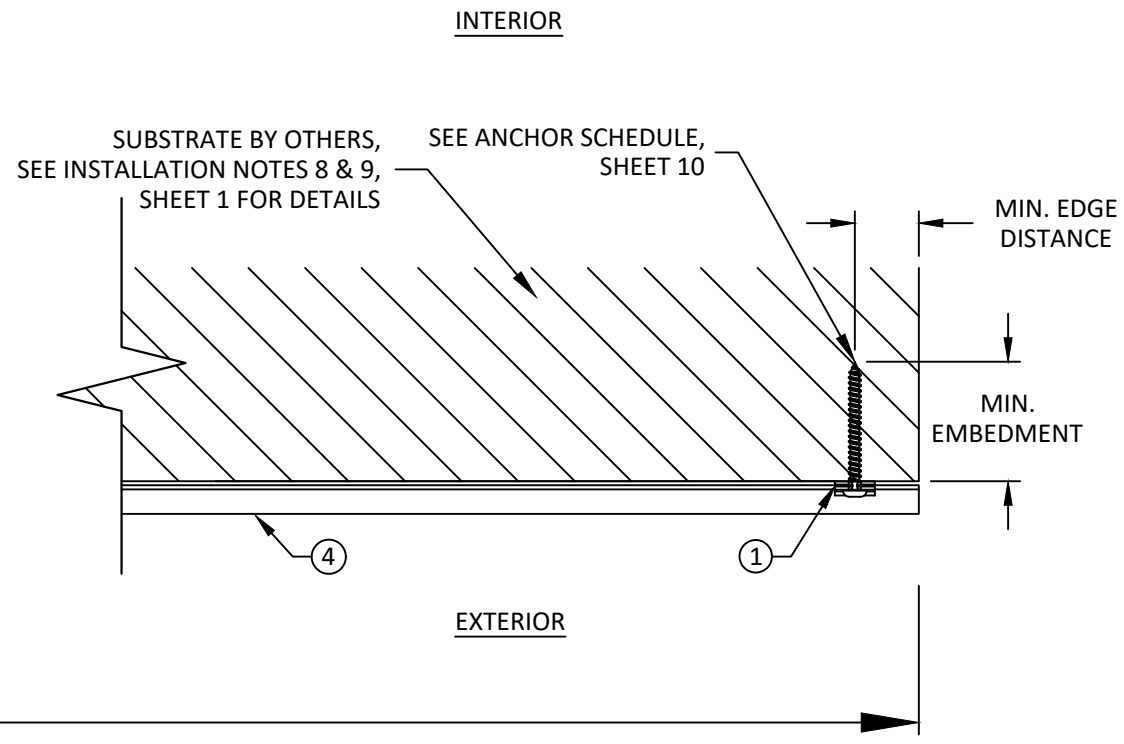
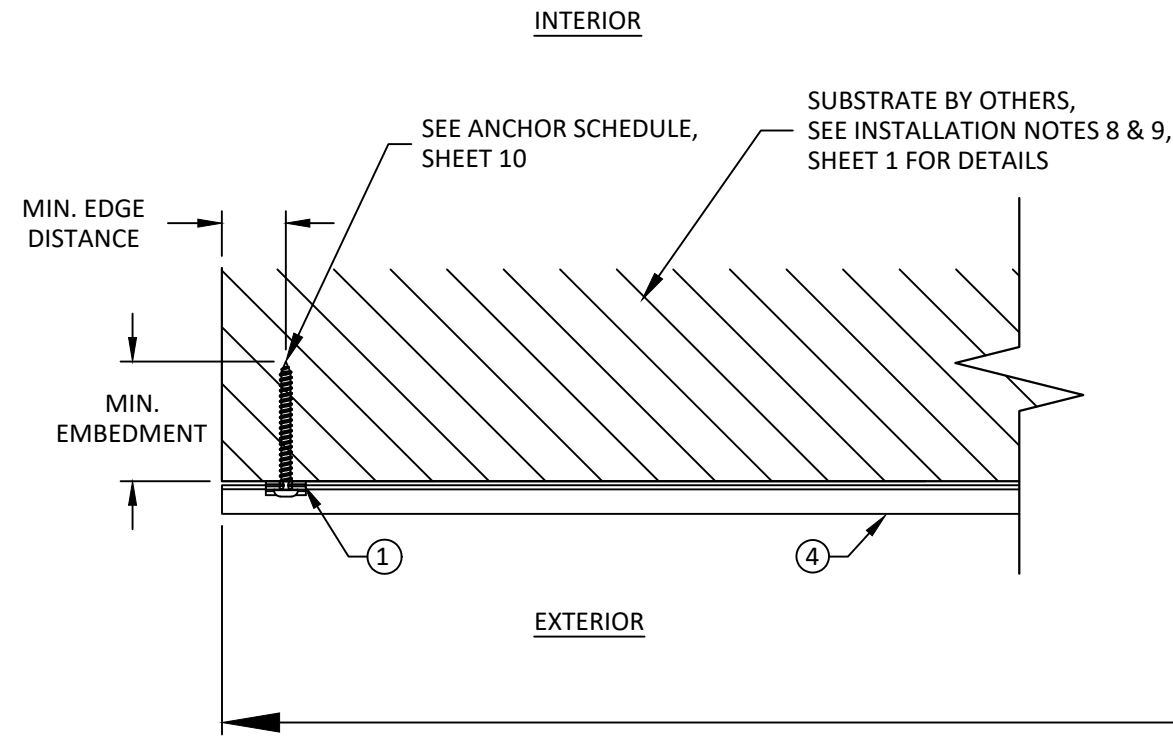
HERMES F. NORERO, P.E.  
FLORIDA P.E. No. 73778  
BUILDING DROPS, INC.  
1900 NE MIAMI CT, SUITE 2-15  
MIAMI, FL 33132  
FBPE CERT. OF AUTHORIZATION No. 29578

FL #:		FL41934	
DATE:		09.02.25	
DWG. BY:		CHK. BY:	
HJ		HFN	
SCALE:		NTS	
DWG. #:		LBD007	
SHEET:		7	
		OF 10	

c:\users\harley\appdata\local\temp\building drops, inc\building drops landing - common\projects\longboard architectural products\lbc-25-0267 - fbc submittal - textured plank wall cladding\dwgs\lbd007.dwg 9/8/2025 5:54 PM



**E**  
**8** **HORIZONTAL SECTION**  
6" SINGLE BEVEL SIDING PLANK



**F**  
**8** **HORIZONTAL SECTION**  
6" TRIPLE BEVEL SIDING PLANK



1777 CLEARBROOK RD #120  
ABBOTSFORD, BC V2T 5X5, CANADA  
PH: (800) 604-0343

TITLE: TEXTURED PLANK WALL  
CLADDING SYSTEM  
(HVHZ)

HORIZONTAL SECTIONS

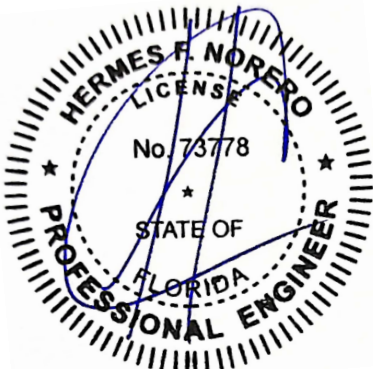
PREPARED BY:  
BUILDING DROPS, INC.

1900 NE MIAMI CT, SUITE 2-15  
MIAMI, FL 33132  
PH: (354) 399-8478  
FAX: (954) 744-4738  
WEB: www.buildingdrops.com



REMARKS	BY	DATE

THE INSTALLATION DETAILS DESCRIBED HEREIN ARE GENERIC  
AND MAY NOT REFLECT ACTUAL CONDITIONS FOR A SPECIFIC  
SITE. IF SITE CONDITIONS CAUSE INSTALLATION TO DEVIATE  
FROM THE REQUIREMENTS DETAILED HEREIN, A LICENSED  
ENGINEER OR ARCHITECT SHALL PREPARE SITE SPECIFIC  
DOCUMENTS FOR USE WITH THIS DOCUMENT.

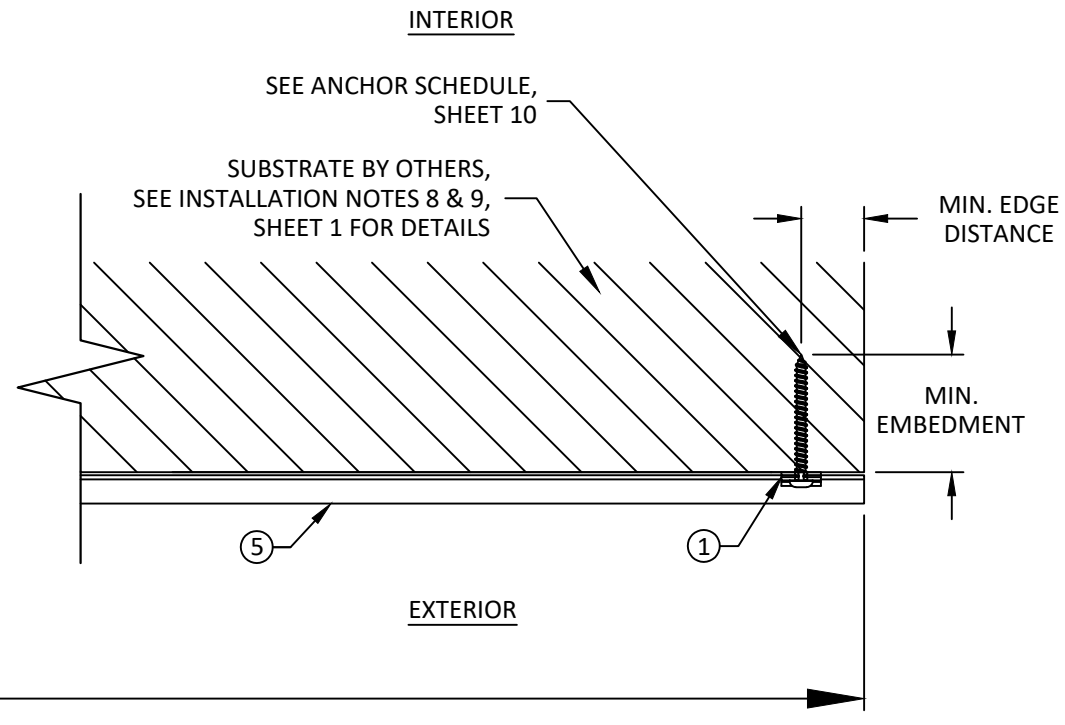
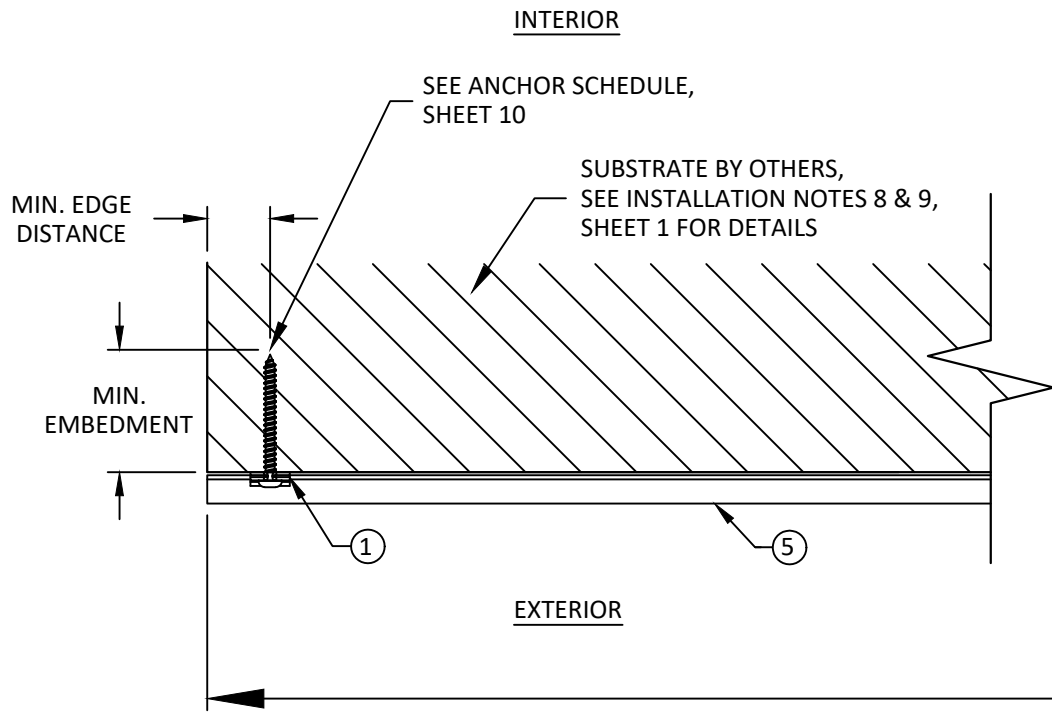


HERMES F. NORERO, P.E.  
FLORIDA P.E. No. 73778  
BUILDING DROPS, INC.  
1900 NE MIAMI CT, SUITE 2-15  
MIAMI, FL 33132  
FBPE CERT. OF AUTHORIZATION No. 29578

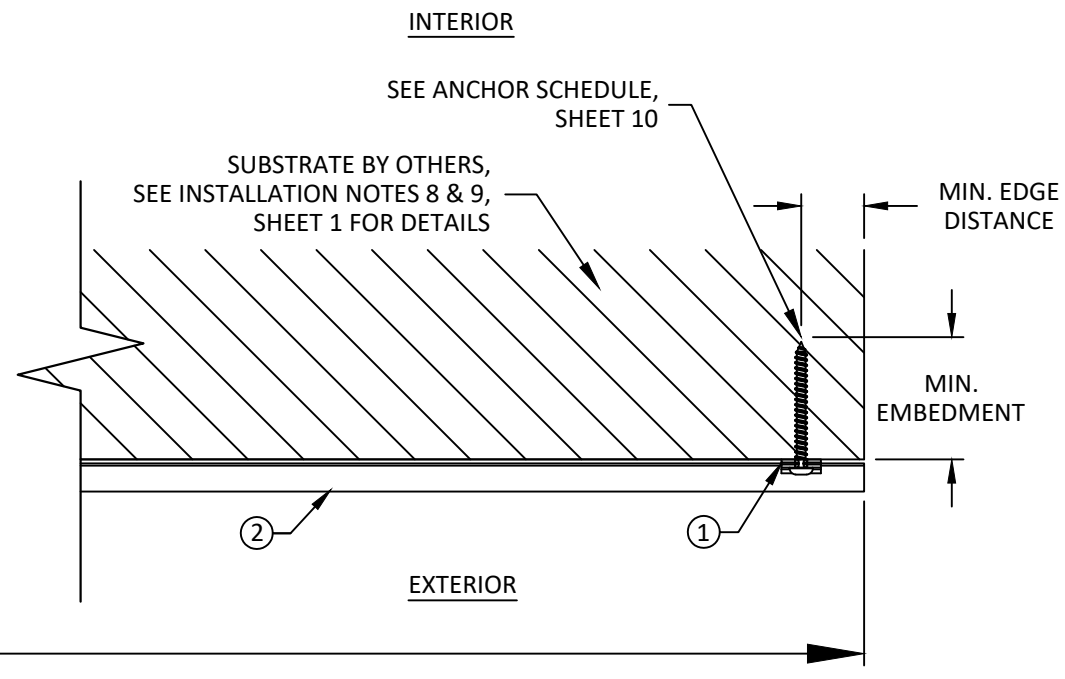
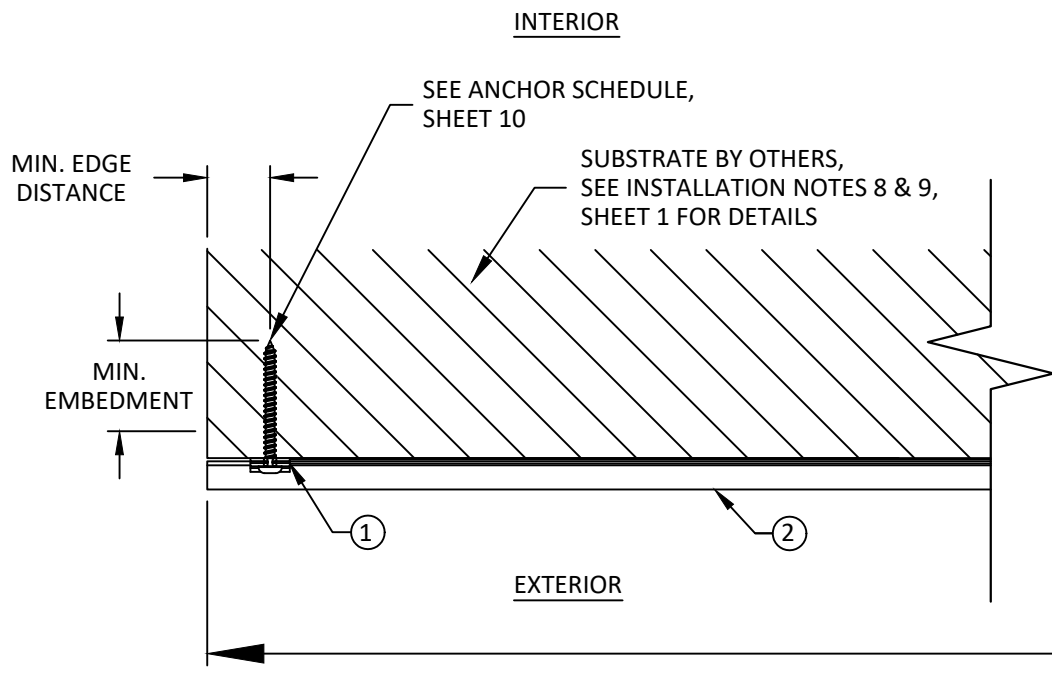
FL #:	FL41934	
DATE:	09.02.25	
DWG. BY:	HJ	CHK. BY: HFN
SCALE:	NTS	
DWG. #:	LBD007	
SHEET:	8	



c:\users\harley\my\building drops, inc\building drops landing - common\projects\longboard architectural products\lbc-25-0267 - fbc submittal - textured plank wall cladding\dwgs\lbd007.dwg 9/8/2025 5:54 PM



**G**  
**9** HORIZONTAL SECTION  
8" CASTELLATION SIDING PLANK



**H**  
**9** HORIZONTAL SECTION  
4" CASTELLATION SIDING PLANK



1777 CLEARBROOK RD #120  
ABBOTSFORD, BC V2T 5X5, CANADA  
PH: (800) 604-0343

TITLE: TEXTURED PLANK WALL  
CLADDING SYSTEM  
(HVHZ)

HORIZONTAL SECTIONS

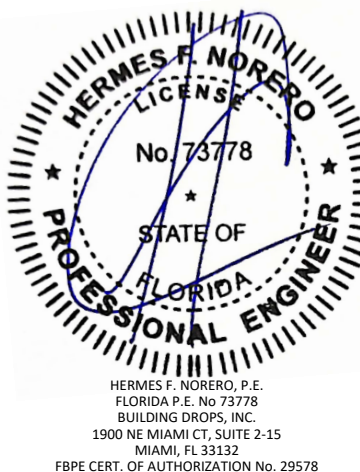
PREPARED BY: BUILDING DROPS, INC.

1900 NE MIAMI CT, SUITE 2-15  
MIAMI, FL 33132  
PH: (354) 399-8478  
FAX: (954) 744-4738  
WEB: www.buildingdrops.com



REMARKS	BY	DATE

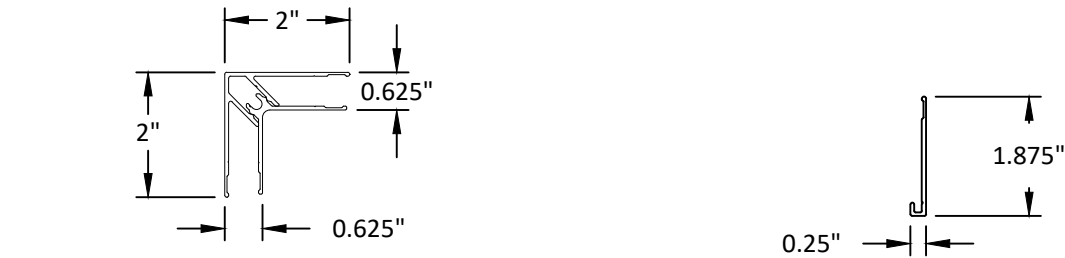
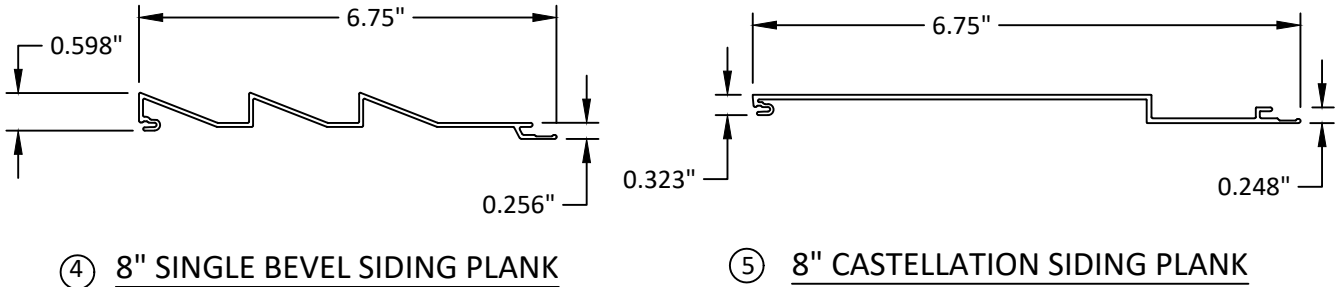
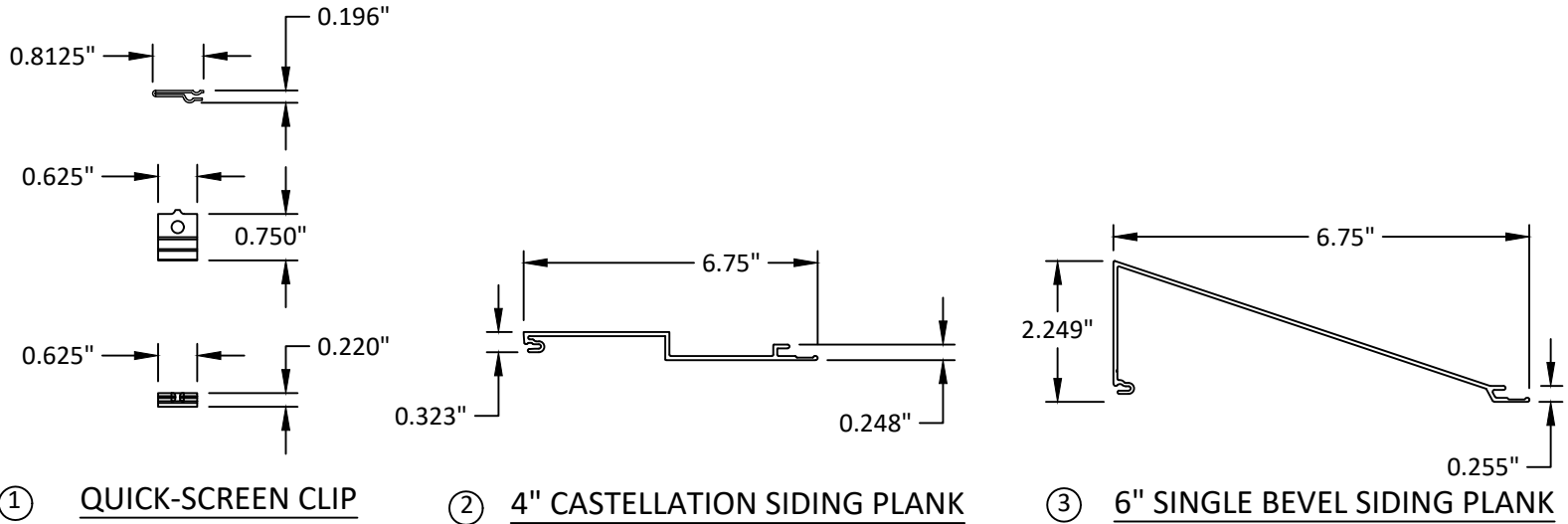
THE INSTALLATION DETAILS DESCRIBED HEREIN ARE GENERIC AND MAY NOT REFLECT ACTUAL CONDITIONS FOR A SPECIFIC SITE. IF SITE CONDITIONS CAUSE INSTALLATION TO DEVIATE FROM THE REQUIREMENTS DETAILED HEREIN, A LICENSED ENGINEER OR ARCHITECT SHALL PREPARE SITE SPECIFIC DOCUMENTS FOR USE WITH THIS DOCUMENT.



FL #:	FL41934	
DATE:	09.02.25	
DWG. BY:	HJ	CHK. BY: HFN
SCALE:	NTS	
DWG. #:	LBD007	
SHEET:	9	

BILL OF MATERIALS		
PART NO.	DESCRIPTION	MATERIAL
1	QUICK-SCREEN CLIP	316 STAINLESS STEEL
2	4" CASTELLATION PLANK	ALUMINUM 6063-T5
3	6" SINGLE BEVEL PLANK	ALUMINUM 6063-T5
4	6" TRIPLE BEVEL PLANK	ALUMINUM 6063-T5
5	8" CASTELLATION PLANK	ALUMINUM 6063-T5
6	TRADITIONAL CORNER SET	ALUMINUM 6063-T5
7	TRADITIONAL STARTER STRIP	ALUMINUM 6063-T5
8	CRAFTSMAN J-TRACK	ALUMINUM 6063-T5
9	TRADITIONAL TWO PIECE J-TRACK (1-3/8")	ALUMINUM 6063-T5

ANCHOR SCHEDULE			
SUBSTRATE	ANCHOR DESCRIPTION	MIN. EMBEDMENT	MIN. EDGE DISTANCE
WOOD: MIN. S.G. = 0.55	#10 WOOD PAN HEAD SCREW	1.50"	0.50"
WOOD: MIN. 5/8" C/D GRADE PLYWOOD		0.25" PAST PLYWOOD STRUCTURE	1"
STEEL: MIN. 18 GA., MIN. Fy=36 KSI	#10 SELF-DRILLING OR SELF-TAPPING PAN HEAD SCREW	3 THREADS PENETRATION PAST METAL STRUCTURE	0.75"
ALUM.: MIN. 1/8", MIN. 6063-T5			
CONCRETE: MIN. F'C = 3000 PSI	3/16" HEX HEAD ITW TAPCON	1"	1.875"
HOLLOW / GROUT-FILLED BLOCK PER C-90: MIN. F'C = 2000 PSI		1"	2"



1777 CLEARBROOK RD #120  
ABBOTSFORD, BC V2T 5X5, CANADA  
PH: (800) 604-0343

TITLE: TEXTURED PLANK WALL  
CLADDING SYSTEM  
(HVHZ)

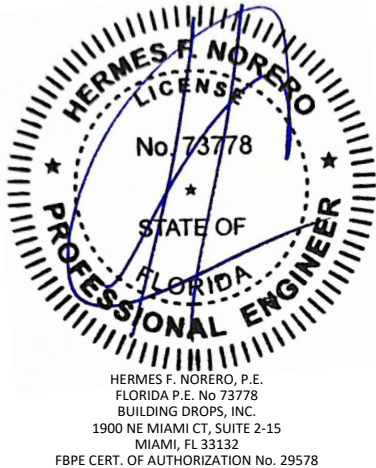
BILL OF MATERIALS, COMPONENTS, &  
ANCHOR SCHEDULE

PREPARED BY:  
 BUILDING DROPS

BUILDING DROPS, INC.  
1900 NE MIAMI CT, SUITE 2-15  
MIAMI, FL 33132  
PH: (354)399-8478  
FAX: (954)744-4738  
WEB: www.buildingdrops.com

REMARKS	BY	DATE

THE INSTALLATION DETAILS DESCRIBED HEREIN ARE GENERIC AND MAY NOT REFLECT ACTUAL CONDITIONS FOR A SPECIFIC SITE. IF SITE CONDITIONS CAUSE INSTALLATION TO DEVIATE FROM THE REQUIREMENTS DETAILED HEREIN, A LICENSED ENGINEER OR ARCHITECT SHALL PREPARE SITE SPECIFIC DOCUMENTS FOR USE WITH THIS DOCUMENT.



FL #: **FL41934**

DATE: **09.02.25**

DWG. BY: **HJ**      CHK. BY: **HFN**

SCALE: **NTS**

DWG. #: **LBD007**

SHEET: **10**

OF 10