



LONGBOARD®
INSPIRING ARCHITECTURE



PRODUCT CATALOG



+1 800 604 0343

longboardproducts.com • info@longboardproducts.com



At Longboard, we seamlessly blend innovation, sustainability, and quality in our architectural products to meet the demands of your designs. Our offerings combine the aesthetic appeal of wood and specialty finishes with the strength and longevity of extruded aluminum. It involves selecting exquisite materials without sacrificing performance, ensuring ease of installation, and delivering products promptly to your job site. Our mission is to positively impact the environment while inspiring the people and communities we serve.

All our exterior products and systems are powder coated with AAMA 2604/2605 certified powder, ensuring high-quality materials that withstand exterior elements, including corrosion and UV rays. All our products are VOC free, created with a chrome-free processes, and 100% non-combustible.

At Longboard, we handle every step of the process in-house, from aluminum extrusion to finishing touches, packaging, and shipping. Explore our various systems and feel free to contact us with any questions.

Content

Tongue & Groove	4
Technical Details	6
Components	8
Acoustics	10
Siding	12
Technical Details	14
Components	16
Link & Lock™	18
Technical Details	20
Components	22
Privacy Beam	24
Technical Details	26
Components	28
Dauntless Ceiling System	30
Technical Details	32
Components	34
Hitch™ Cladding Attachment System	36
Technical Details	38
Components	40
Our Finishes	42
Color Chart	44
Testing & Certifications	46
Sustainability	47
The Longboard Difference	49



The background image shows a modern building at dusk. The building features a large glass facade on the left side, reflecting the interior lights and the sky. The rest of the building is clad in horizontal panels, likely the Tongue & Groove system being advertised. The sky is a deep blue, and the interior lights of the building are on, creating a warm glow.

TONGUE & GROOVE

PROJECT

Union Community Health Connection

COLOR

Light National Walnut & Anodic Ice

PRODUCT

6" V-Groove

SECTOR

Healthcare

The Longboard Tongue & Groove system is a beautiful and versatile solution for cladding and soffit. It's made of 100% extruded architectural aluminum, easy to install, non-combustible, and weather resistant.



PROJECT
Hilton Garden Inn

PRODUCT
6" V- Groove

COLOR
Light Cherry

SECTOR
Hospitality

Tongue & Groove

Applications

Exterior: Cladding, Soffit & Panelboard™
Interior: Ceilings, Walls & Panelboard™





These 100% extruded aluminum systems are available in visually striking woodgrains, solid colors, specialty finishes. Easy to install, non-combustible, and weather resistant, these systems are available in different plank dimensions with optional perforation solutions for vented applications.


Available in 24 ft. lengths, or 12 ft. on request. They can be easily fabricated in a pre-fab facility or on-site to suit project conditions.

Technical Specifications

Physical Data

- 6063-T5 Extruded Aluminum
 - 100% Recyclable
 - Warranty: Finish:15 year (standard)/ 20 year* (ultra)
 - Aluminum: 50 year
 - Weight (lbs/sqft): ~1.5
- 

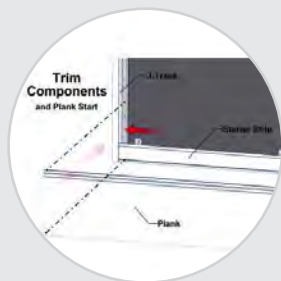
Fire Rating: Class A Non-Combustible by
ASTM E136 & ASTM E84 A2-s1,d0 by EN 13501-1
- 

Wind load:Up to 121 psf (5794 Pa) TAS 202, TAS 203
- 

Light reflectance (LRV): 5% (Black) Up to 73.2% (Ultra White)

Testing

ICC-ESR 4182 Evaluation Report - Division: 07 00 00 Thermal and Moisture Protection Section: 07 46 00 - Siding
AAMA 509 Rainscreen: W1, V2LARR - Los Angeles Department of Building Safety (LADBS) accepts ICC-ES reports as proof of compliance
Florida Product Code: FI41934 Miami Dade, Florida, Notice of Acceptance (NOA)
NOA No. 22-0209.01-Expiration Date: January 26, 2028
Impact testing: TAS 201
WUI (The Wildland-Urban Interface) - California Department of Forestry & Fire Protection Office of the State Fire Marshal Listing No. 8140-2286:0500



Plank Profiles

V-Groove: 2-1/2", 4", 6"
Smooth: 6"
Channel: 6"
Standard Lengths: 24', 12'
96 SQ FT/box

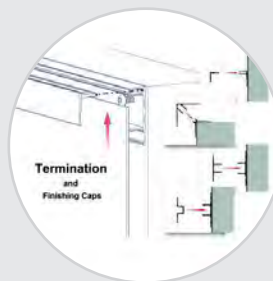
Component Trims

Standard Lengths: 24ft, 12ft



Attachment

Planks: Quick-screen clips w. #10 screws* @ 32" o.c. (standard).
Quick-screen clips included: 135 pcs/4" box, 90 pcs/6" box.
Trims: hard fasten w. #10 screws* @ 16" o.c. *Screws not included.



Finishes

Woodgrains, solid color, naturally aged metal, custom solid color matching (additional lead times apply)

BIM & CAD

RVT & DWG files available, see website for details

Rain Screen Cladding

Wall assemblies with drained and back-ventilated (DBV) rain screen cladding are becoming an increasingly popular choice across North America for architects, building science professionals, and building owners to construct sustainable high performance building enclosures.

These type of wall assemblies not only effectively deal with water and moisture, but also avoid radiant heat gain, accommodate continuous exterior insulation for improved thermal performance and improve IEQ (Indoor Environmental Quality).



Tongue & Groove Planks



V-Groove Planks

V-Groove Planks

Size	12'	24'
2½"	3V.145	-
4"	4V.145	4V.289
6"	6V.145	6V.289



Channel Planks

Channel Planks

Size	12'	24'
6"	6CH.145	6CH.289



Castellation Planks

Castellation Planks

Size	12'	24'
4"	4CA.145	4CA.289
8"	8CA.145	8CA.289

* Vertical Install Only
 * 4" / 8" Castellation Planks only available in Solid Finishes
 * 4" / 8" Castellation Planks with Link & Lock™ Battens in Solid & Woodgrain Finishes



Smooth Planks

Smooth Planks

Size	12'	24'
6"	6PSP.145	6PSP.289



Perforated Planks

Perforated Planks

Size	12'	24'
2½" V-Groove Plank	3VP.145	-
6" V-Groove Plank	6VPA.145	6VA.289
6" V-Smooth Plank	6PSPP.145	6PSP.289

Accoustical Soundtex® Scrim

6" V-Groove Plank	6PSP.145	6PSP.289
6" Smooth Plank	6PSPPA.1454	6PSPPA.289



Bevel Planks

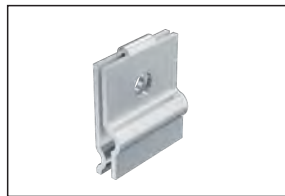
Bevel Planks

Size	12'	24'
6" Single	6SB.145	6SB.289
6" Triple	6TB.145	6TB.289

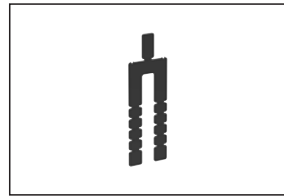
Accessories



Butt Joint Fastening Kit
 20 Kits, bag - TGBJKIT



Quick Screen Clips
 1750, box - CLIP.N1750



1/16" U-Shim
 250, bag - SHIM.1001



Touch Up Pens
 TUP *Reach out to confirm color with account manager.*

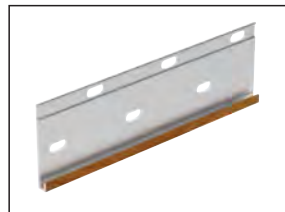
Component Trims

Starter



Precision Starter J-Track

Dimensions: (5/8") - 12'
 SKU: 1SJT.145



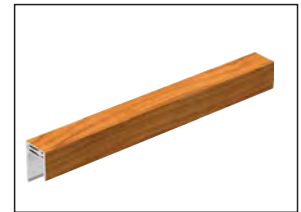
Traditional Starter Strip

Dimensions: (1-7/8") - 12'
 SKU: 2SS.145



Traditional Back-to-Back
 Starter Strip

Dimensions: (1-7/8") - 12'
 SKU: 2BTBSS.145



Precision Two-Piece J-Track

Dimensions: (5/8") - 12'
 SKU: 1X1JT.145



Traditional Two Piece J-Track

Dimensions: (1-3/8") - 12'
 SKU: 1X2JT.145



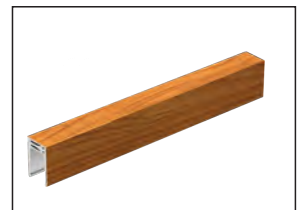
Precision J-Track

Dimensions: (5/8") - 12'
 SKU: 1JT.145



Craftsman J-Track

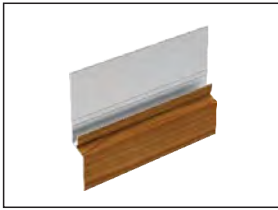
Dimensions: (7/8") - 12'
 SKU: JT23.145



Craftsman 2 Piece J-Track

Dimensions: (7/8") - 12'
 SKU: JT23S.145

Compression Joint



Traditional Compression Joint

Dimensions: (1-3/8") - 24'
SKU: 2CJ.289

Corner



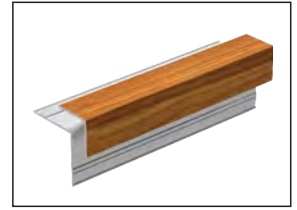
Traditional 3" Smooth Corner

Dimensions: (3")-24'
SKU: 3SCP.289



Traditional 3" V Groove Corner

Dimensions: (3")-24'
SKU: 3VCP.289



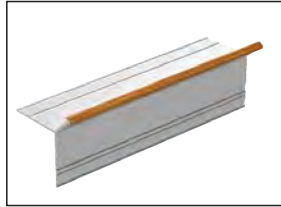
Craftsman Outside Corner

Dimensions: (1") - 12'
SKU: 1OC.145



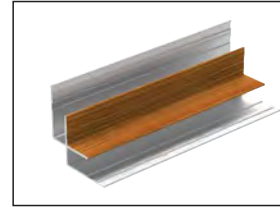
Traditional Corner Set

Dimensions: (2") - 12'
SKU: 2CORS.145



Precision Outside Corner

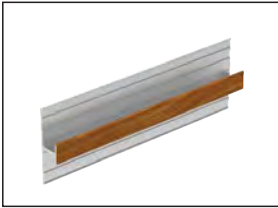
Dimensions: (3/16") - 12'
SKU: 05OC.145



Craftsman Inside Corner

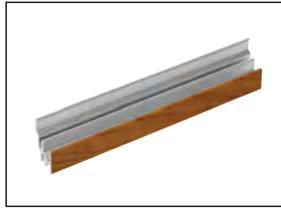
Dimensions: (3/4") - 12'
SKU: 1IC.145

Reveal



Precision Flat Reveal

Dimensions: (1/2") - 12'
SKU: 1FR.145



Precision T&G Flat Reveal

Dimensions: (1/2") - 24'
SKU: 1TGFR.289



Craftsman U-Reveal Set

Dimensions: (3/4") - 12'
SKU: 1URS.145



Craftsman T&G U-Reveal

Dimensions: (3/4") - 24'
SKU: 1TGURK.289



Traditional U-Reveal Set

Dimensions: (1-1/2") - 12'
SKU: 2URS.145



Traditional Flat Reveal Set

Dimensions: (1-1/2") - 12'
SKU: 2FRS.145



Traditional T&G U-Reveal

Dimensions: (1 1/2") - 24'
SKU: 2TGURK.289



Traditional Offset Flat Reveal Set, J-Track Base

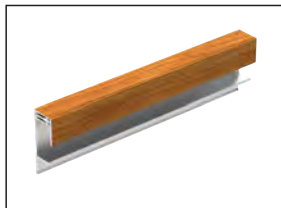
Dimensions: (2") - 12'
SKU: 2OFFJ.145

Termination



Traditional Offset Flat Reveal Set, Termination Base

Dimensions: (2") - 12'
SKU: 2OFFT.145



Precision Termination Set

Dimensions: (5/8") -12'
SKU: 1TS.145



Craftsman Termination Set

Dimensions: (7/8") -12'
SKU: TS23S.145



Traditional Termination Set

Dimensions: (1-3/8") -12'
SKU: 2TS.145

Acoustical Performance

There are three main areas of interest involving the acoustic performance of interior surfaces: sound absorption, sound transmission and sound reflection/diffusion.

Sound Absorption

Sound absorption is important for reducing the overall noise level in an area and for preventing "echoing" of sound. The common measurement is the Noise Reduction Coefficient (NRC). NRC can be achieved with Longboard systems that utilize openings in various forms like perforations, reveals, or grooves. These openings allow a percentage of sound energy to pass through into the sound absorbing materials (e.g.Soundtex scrim, fiberglass or mineral fiber batt) positioned beyond the openings.

Sound Attenuation (Blocking)

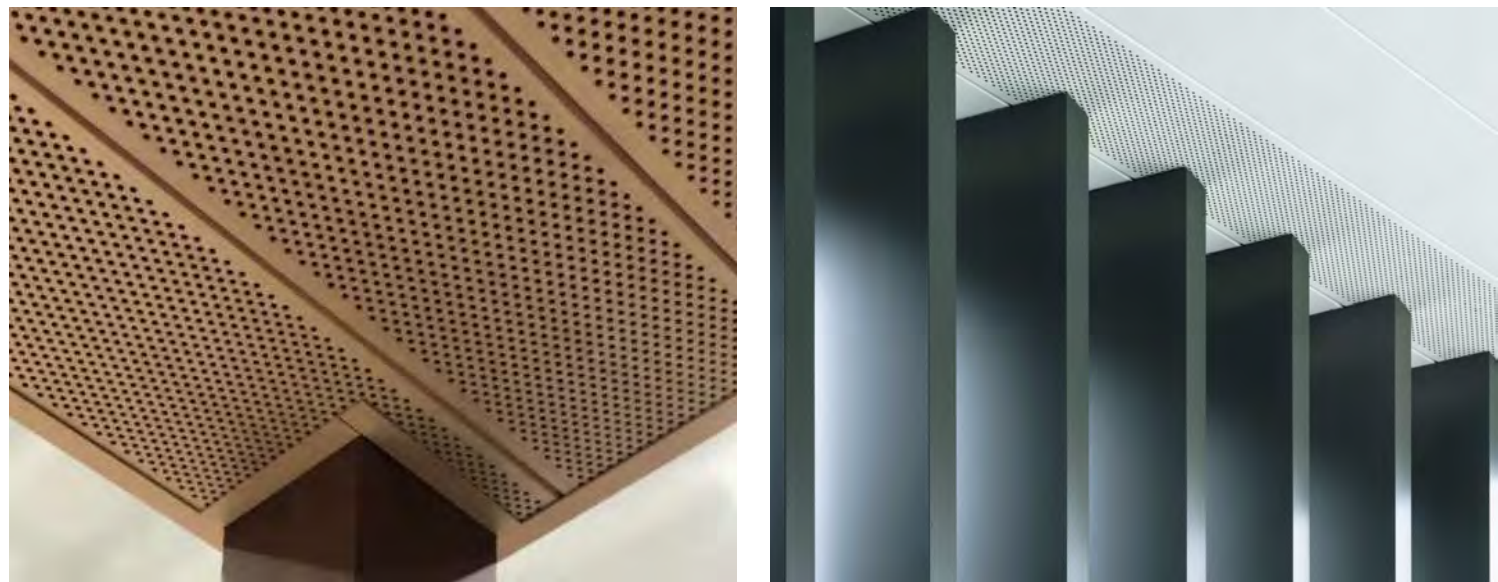
Sound attenuation rates the performance of a ceiling system as a barrier to airborne sound transmission through a common plenum between adjacent closed spaces, such as offices. This property is measured as the Ceiling Articulation Class (CAC), with higher numbers indicating better performance.

Sound Reflection/Diffusion

Acoustical materials may provide a means of reflecting or diffusing sound. The degree of reflection and the amount of diffusion are greatly affected by the type of material, density of the material and surface finish.

Metal Linear Ceilings Closed Joint Systems	Backer (Insulation)	NRC	SAA	Metal Linear Ceilings Open Joint Systems	Backer (Insulation)	NRC	SAA
PROVIDED BY LONGBOARD				PROVIDED BY LONGBOARD			
2-1/2" Perforated Plank	No Backer	0.05	0.03	6" Link & Lock Baffles	No Backer	0.10	0.12
6" V-Groove Plank	No Backer	0.15	0.12	6" Dauntless Baffles	No Backer	0.05	0.05
6" Perforated Plank	Soundtex®	0.75	0.75	LONGBOARD BAFFLES WITH BACKER PROVIDED BY OTHERS			
LONGBOARD PLANKS WITH BACKER PROVIDED BY OTHERS				6" Link & Lock Baffles @ 6" O.C.	Fiberglass 1" thickness @ 3lbs/ft3	0.80	0.81
2-1/2" Perforated Plank	Fiberglass 1" thickness @ 3lbs/ft3	0.70	0.72	4" Dauntless Baffles @ 6" O.C.	Fiberglass 1" thickness @ 3lbs/ft3	0.75	0.75
6" V-Groove Plank	Fiberglass 1" thickness @ 3lbs/ft3	0.10	0.11	6" Dauntless Baffles @ 6" O.C.	Fiberglass 1" thickness @ 3lbs/ft3	0.79	0.80
6" Perforated Plank	Fiberglass 1" thickness @ 3lbs/ft3	0.70	0.70	6" Dauntless Baffles @ 6" O.C. (with Insulation above rails)	Fiberglass 1" thickness @ 3lbs/ft3	0.65	0.65
6" Perforated Plank	Fiberglass 2" thickness @ 3lbs/ft3	0.95	0.96				

The test reported in this document conformed explicitly with ASTM C423-17 "Standard Test Method for Sound Absorption and Sound Absorption Coefficients by the Reverberation Room Method."









SIDING

PROJECT

Latimer Lake Office Park (Parking Lot)

COLOR

Bone White

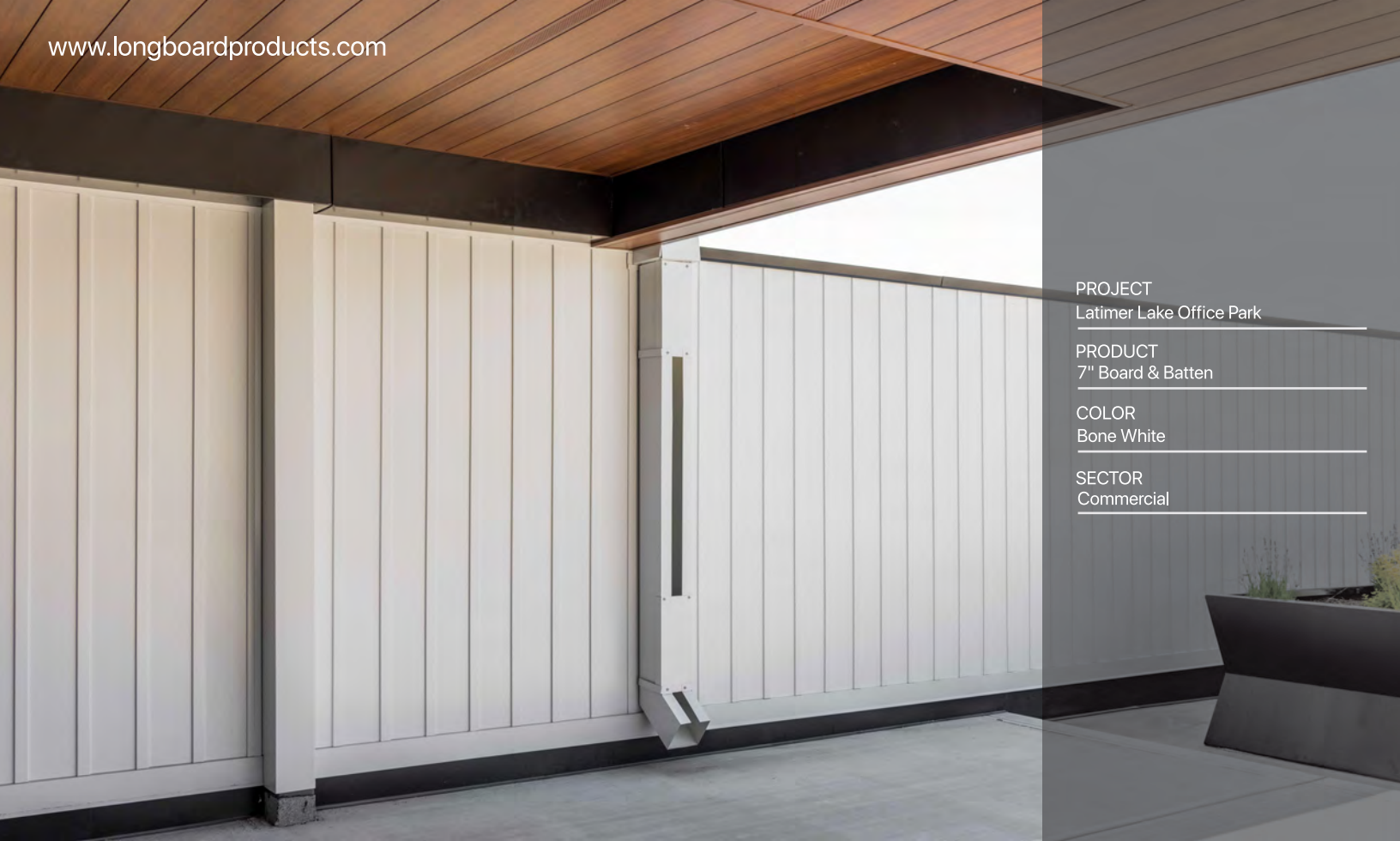
PRODUCT

7" Board & Batten

SECTOR

Commerical

Achieve the timeless aesthetic of traditional lap siding, now with the modern advantages of architectural aluminum. Engineered for long-lasting durability, this profile features a 1.5mm thickness and is crafted from premium 6063-T5 aluminum, offering exceptional resistance to denting, warping, and fading.



PROJECT
Latimer Lake Office Park

PRODUCT
7" Board & Batten

COLOR
Bone White

SECTOR
Commercial

Siding

Applications

Exterior: Lap Siding, Board & Batten






Lap Siding and Board & Batten deliver a classic architectural look with contemporary performance. Designed primarily for residential applications, these systems are equally suited for commercial projects that seek a refined, lasting finish.

With the strength of aluminum and our industry-leading coating technology, they offer a seamless combination of elegance and durability.

Technical Specifications

Physical Data

6063-T5 Extruded Aluminum
100% Recyclable
Warranty: Finish:15 year (standard)/ 20 year* (ultra)
Aluminum: 50 year
Weight (lbs/sqft): ~1.04

-  Fire Rating: : Class A Non-Combustible by ASTM E136 & ASTM E84 ;A2-s1,d0 by EN 13501-1
-  Wind load:Up to 121 psf (5794 Pa) TAS 202, TAS 203
-  Light reflectance (LRV): 5% (Black) Up to 73.2% (Ultra White)

Testing

ICC-ESR 4182 Evaluation Report - Division: 07 00 00 Thermal and Moisture Protection Section: 07 46 00 - Siding
AAMA 509 Rainscreen: W1, V2
LARR - Los Angeles Department of Building Safety (LADBS) accepts ICC-ES reports as proof of compliance
WUI (The Wildland-Urban Interface) - California Department of Forestry & Fire Protection Office of the State Fire Marshal Listing No. 8140-2286:0500

Lap Siding

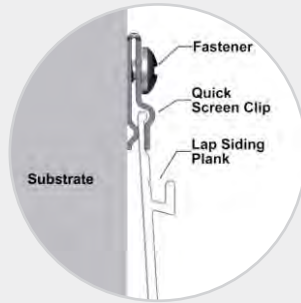


Profiles

Lap plank: 6"
Standard Lengths: 12' only
48 SQ FT/box (8/12s)

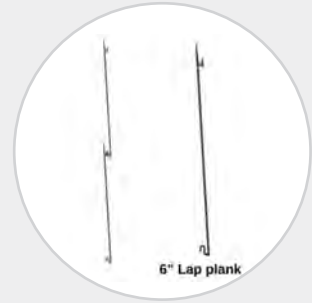
Components

Standard Lengths: 12'



Attachment

Planks: Quick-screen clips w. #10 Pan Head screws* @ 32" o.c. (standard).
Quick-screen clips included: 56 pcs/box (8/12's)
Trims: hard fasten w. #10 Pan Head screws* @ 16" o.c.
*Supplied by others.



Finishes

Available: 4 solid Tier 1 colors

BIM & CAD

RVT & DWG files available, see website for details



Board & Batten

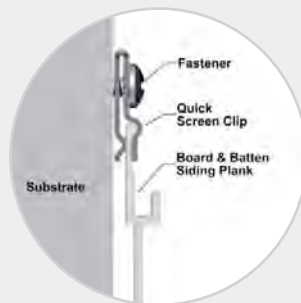


Profiles

Board & Batten plank: 7"
Standard Lengths: 6', 12'
Box: 56 SQ FT (8/12's)

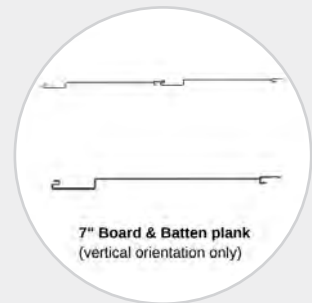
Components

Standard Lengths: 12'



Attachment

Planks: Quick-screen clips w. #10 Pan Head screws* @ 32" o.c. (standard).
Quick-screen clips included: 56 pcs/box (8/12's)
Trims: hard fasten w. #10 Pan Head screws* @ 16" o.c.
*Supplied by others.



Finishes

Available: 4 solid Tier 1 colors

BIM & CAD

RVT & DWG files available, see website for details

Siding



Lap Siding (Double)



Board & Batten (Double)
* Vertical Install Only



Butt Joint Fastening Kit



Quick Screen Clips



Touch Up Pens

Lap Siding

Size	12'
6"	6L.145

48 sq. ft. box quantities

Board & Batten

Size	12'
7"	7BB.145

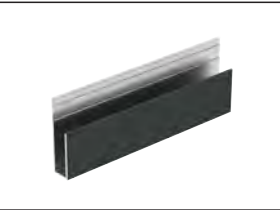
56 sq.ft. box quantities

Accessories

Product	Qty	SKU
Quick Screen Clips	1750, box	CLIP.N1750
Quick Screen Clips	100, bag	CLIP.N100
Butt- Joint Fastening Kit (6")	20 kits, bag	TGBJKIT
Touch Up Pens <i>Reach out to confirm color with account manager.</i>	N/A	TUP

Trim Components

J-Track



Traditional J Track

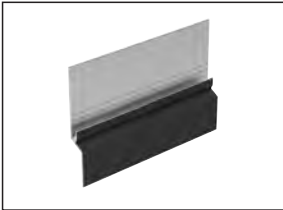
Dimensions: (1-3/8")-12'
SKU: JT35.145



Traditional Two piece J-Track

Dimensions: (1-3/8")-12'
SKU: 1X2JT.145

Compression



Traditional Compression Joint

Dimensions: (1-3/8")-12'
SKU: 2CJ.289

Corner



Traditional Corner Set

Dimensions: (1"-2")-12'
SKU: 2CORS.145

Reveal



Traditional Flat Reveal Set

Dimensions: (1"-2")-12'
SKU: 2FRS.145



Traditional Offset Flat Reveal Set

Dimensions: (2")-12'
SKU: 2OFFJ.145



Traditional U Reveal Set

Dimensions: (1"-1/2")-12'
SKU: 2URS.145

Starter



Traditional Starter Strip

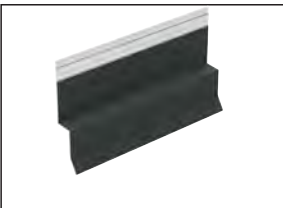
Dimensions: (1-7/8")-12'
SKU: 2SS.145



Board & Batten Back to Back Starter

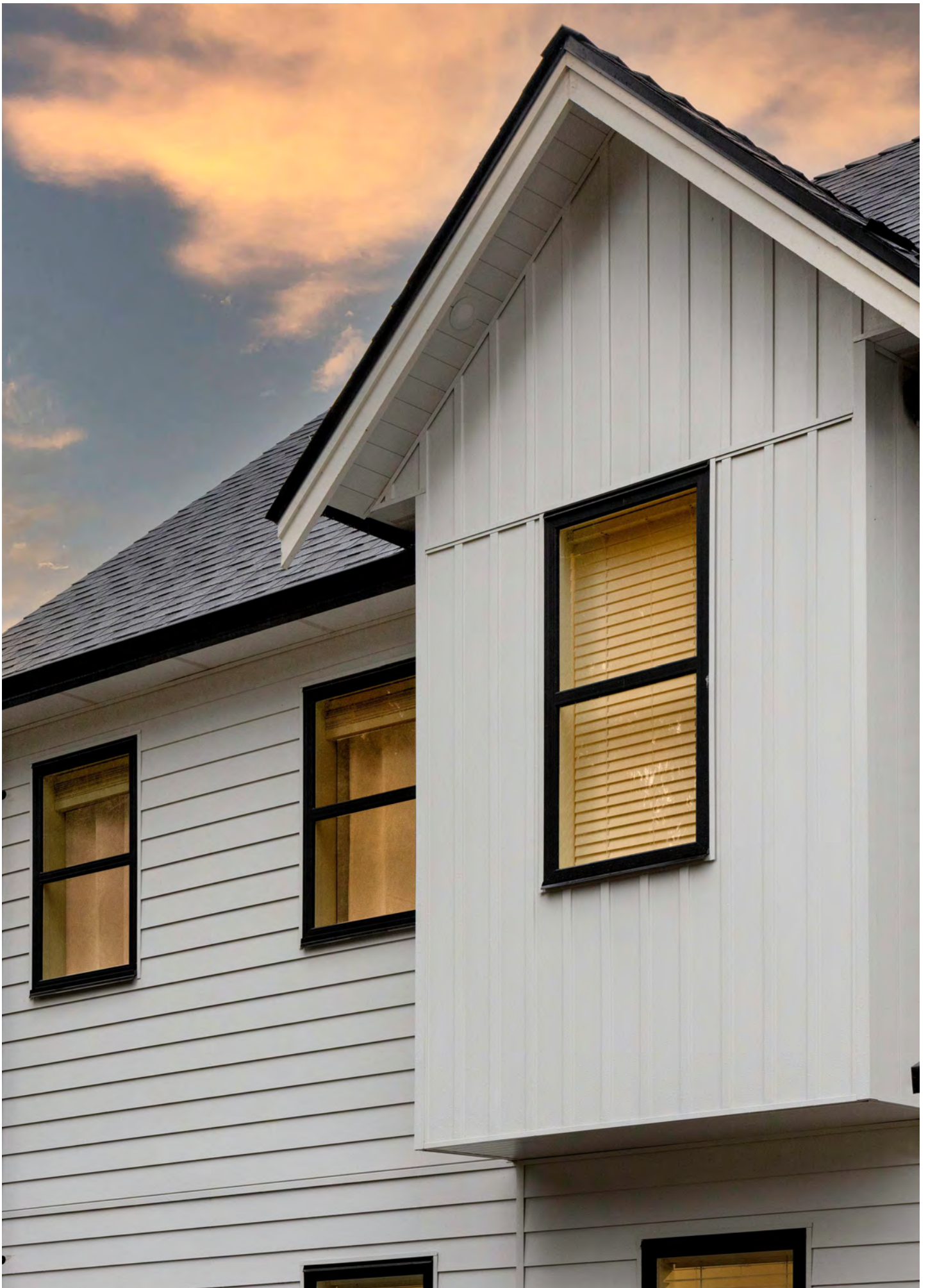
Dimensions: (5.5")-12'
SKU: 6BTBS.145

Drip Edge



Drip Edge

Dimensions: (1-3/8")-12'
SKU: 2DE.145







LINK & LOCK™

PROJECT

Northern Lakes College

COLOR

Birchwood

PRODUCT

4" Link & Lock™

SECTOR

Education

Link & Lock™ is the innovative hidden fastener solution!
The system was designed for easy install and creative adaptability in a variety of exterior & interior applications.



Link & Lock™

Applications

Exterior: Cladding, Soffit, Screens & Enclosures
Interior: Ceilings, Walls, Screens & Partitions





The system was designed for easy install and creative adaptability in a variety of exterior applications. The Link & Lock™ aluminum batten system compliments any architectural design being non-combustible and weather resistant and uses matching Longboard end caps where needed to create a finished look.

The system is available in various dimensions and all woodgrain, solid color, naturally aged metal, and specialty finish options. These 2-piece battens can be installed in a variety of different ways and orientations to achieve beam, fin or louvre designs.

Technical Specifications

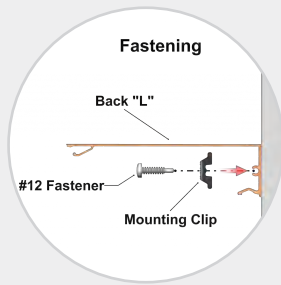
Physical Data

6063-T5 Extruded Aluminum
100% Recyclable
Warranty: Finish: 15 year (standard)/ 20 year* (ultra)
Aluminum: 50 yea
Weights: 0.93 (2"), 1.3 (4"), 1.6 (6"), 1.9" (8"), 1.8 (4"x4"), 2.1 (4"x 6")

-  Fire Rating: Class A Non-Combustible by ASTM E136 & ASTM E84 A2-s1,d0 by EN 13501-1
-  Light reflectance (LRV): 5% (Black) Up to 73.2% (Ultra White)

Testing

ICC-ES Evaluation Report - Division: 05 00 00 – METALS •
Section: 05 50 00 - Metal Fabrications
LARR - Los Angeles Department of Building Safety (LADBS) accepts ICC-ES reports as proof of compliance
International Building Code (IBC).
International Residential Code (IRC)
California Building Code (CBC),
California Residential Code (CRC)
City of Los Angeles Building Code (LABC)
City of Los Angeles Residential Code (LARC)
Florida Building Code – Building, Florida Building Code – Residential

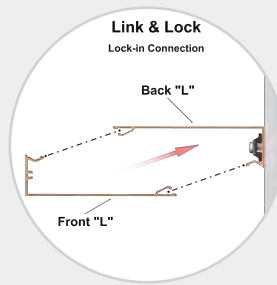


Profiles

1-5/8" x 2", 4", 6", 8", 4"x 4", 4"x 6"
HD: 2" x 4", 6", 8"
Standard lengths: 24', 12'

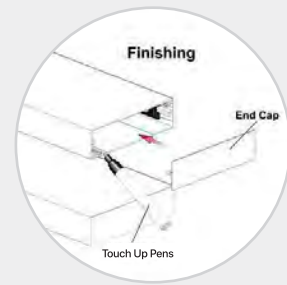
Components

End Caps, Mounting Clips
End Mounts & Mounting Brackets



Attachment

Fasten w. #12 screws
Using mounting clips. (*Not included)
See install guide for details.



Finishes

Woodgrains, solid color,
naturally aged metal, custom
solid color matching
(additional lead times apply)

BIM & CAD

RVT & DWG files available,
see website for details

Rain Screen Solutions

Open-joint cladding is a rainscreen solution consisting of cladding beams, fins, or planks installed with intentional gaps between each member. This design creates a fresh, modern aesthetic that is currently trending among architects and designers to create unique building facades. These types of cladding solutions add texture and depth to walls, enhancing the structure's visual appeal.

Aluminum is widely used for open-joint cladding due to its durability, corrosion resistance, and lightweight nature. It is strong yet easy to handle and install, offering design flexibility with various finishes. Additionally, aluminum is a sustainable choice as it is recyclable and requires minimal maintenance, making it both environmentally friendly and cost-effective in the long run.



Link & Lock™

Link & Lock™ Battens



Size	12'	24'	End Caps 20 / Box	End Caps 20 / Box
2"	2X2LL.145	2X2LL.289	2LLEC.2	2LLEM.2
4"	2X4LL.145	2X4LL.289	2LLEC.4	2LLEM.4
6"	2X6LL.145	2X6LL.289	2LLEC.6	2LLEM.6
8"	2X8LL.145	2X8LL.289	2LLEC.8	2LLEM.8

Link & Lock™ HD Battens



4"	2X4LLHD.145	2X4LLHD.289	2LLHDEC.4	2LLHDEM.4
6"	2X6LLHD.145	2X6LLHD.289	2LLHDEC.6	2LLHDEM.6
8"	2X8LLHD.145	2X8LLHD.289	2LLHDEC.8	2LLHDEM.8

Link & Lock™ Box Battens



4" x 4"	4X4LL.145	4X4LL.289	4LLEC.4
4" x 6"	4X6LL.145	4X6LL.289	4LLEC.6

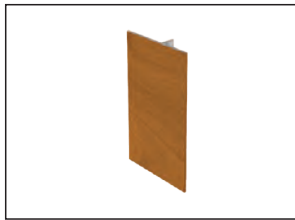
Link & Lock™ Mounting Brackets

	Single	Dual
45° LEFT FIXED	LLMBK.45LF	LLDMBK.45LF
45° RIGHT FIXED	LLMBK.45RF	LLDMBK.45RF
90° CENTER FIXED	LLMBK.90F	LLDMBK.90F
45° LEFT SLIDING	LLMBK.45LS	LLDMBK.45LS
45° RIGHT SLIDING	LLMBK.45RS	LLDMBK.45RS
90° CENTER SLIDING	LLMBK.90S	LLDMBK.90S

Mounting Accessories

	Qty	SKU
Link & Lock Mounting Clip	48 / bag	LLMC.N48
Link & Lock™ Isolation Washer	48 / bag	LLIW.N48
Dewalt® 1/2" Pilot Point Drill Bit	1	DRILLBT.05
24' Link & Lock Internal Stiffener	1	LLSTIFF.289
3M® Double Sided Adhesive Tape - 108'	1 / roll	LLTAPE.1296

Accessories



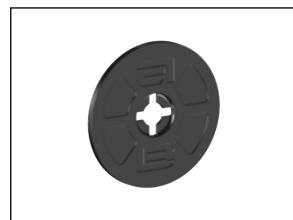
End Caps

Qty: 20 / box
SKU: Please see above chart



End Mounts

Qty: 20 / box
SKU: Please see above chart



Isolation Washer

Qty: 48 / bag
SKU: LLIW.N48



Link & Lock Mounting Clip

Qty: 48 / bag
SKU: LLMC.N48



Single & Dual Brackets

Qty: 1
SKU: Please see above chart



45° Mounting Brackets Fixed

Qty: 1
SKU: Please see above chart



45° Mounting Brackets Sliding

Qty: 1
SKU: Please see above chart



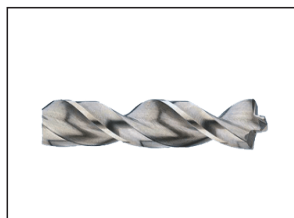
90° Fixed & Sliding

Qty: 1
SKU: Please see above chart



24 ft Link & Lock Internal Stiffener

Qty: 1
SKU: LLSTIFF.289



Dewalt® 1/2" Pilot Point Drill Bit

Qty: 1
SKU: DRILLBT.05



3M® Double Sided Tape - 108'

Qty: 1 / Roll
SKU: LLTAPE.1296



Tanger Outlet



PRIVACY BEAMS

PROJECT

Tanger Outlets

COLOR

Dark Cherry

PRODUCT

1" x 3" Privacy Beam

SECTOR

Retail

Our Privacy Beams can be used as stand alone screening members and can be mechanically fastened to any building structure.



PROJECT
NY Cooling Tower

PRODUCT
1" x 3" & 1" x 5" Privacy Beam

COLOR
Dark National Walnut & Dark Fir

SECTOR
Commercial

Privacy Beams

Applications

Exterior: Cladding, Soffit, Screens & Enclosures
Interior: Walls, Screens & Partitions



Longboard Privacy Beams can function as independent screening elements and can be mechanically attached to any building structure. Alternatively, they can be integrated into the Longboard Privacy Screen System, available in either a floating or end-frame configuration.

Privacy Beam profiles are available in 1"x5" or 1"x3" dimensions with thickenings in the side wall to allow for mechanical fastening and come in a wide variety of wood grain, solid color, and specialty finish options. The beams are designed to accept matching Longboard end caps where needed to create a premium finished look.



blocks.

The Longboard Privacy Screen System in an end-frame configuration is designed as a dual-sided application utilizing double posts as intermediate supports with single posts at corners and termination points. Spacing for the floating system is created with mounting brackets and spacer bars whereas the end-frame system utilizes spacer

Technical Specifications

Physical Data

6063-T5 Extruded Aluminum
100% Recyclable
Warranty:
Finish:15 year (standard)/ 20 year (ultra *10 week lead time);
Aluminum: 50 year
Weight (lbs/lf): 0.7 (1X3); 1.1 (1X5)

-  Fire Rating: Class A Non-Combustible by ASTM E136 & ASTM E84 A2-s1,d0 by EN 13501-1
-  Light reflectance (LRV): 5% (Black) Up to 73.2% (Ultra White)

Testing

ICC-ES Evaluation Report – Division: 05 00 00 – METALS •
Section: 05 50 00 - Metal Fabrications
LARR - Los Angeles Department of Building Safety (LADBS) accepts ICC-ES reports as proof of compliance
Florida Building Code – Building,
Florida Building Code - Residential
WUI (The Wildland-Urban Interface) - California Department of Forestry & FireProtection Office of the State Fire Marshall Listing
No. 8140-2286:0500



Profiles

1" x 3", 1" x 5" - Standard Lengths 24'

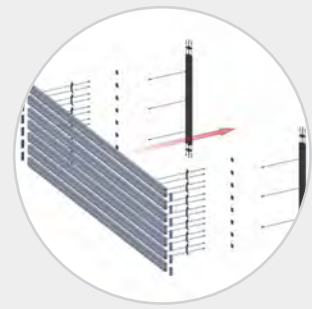
Components

Single Post, Double Post - Standard 24'L
Beam End Cap, Post End Cap - (20pcs)
Spacer Bar (1", 12'), Spacer Block (100 pcs)
Mounting Bracket - 100pcs)



Attachment

Floating System attached with Mounting Brackets, End Frame System placed in posts and supported with Spacer Blocks.
Spacer Bar - Comes in 12ft Lengths - cut for variable heights
Spacer Block - 1-1/2" Spacer



Finishes

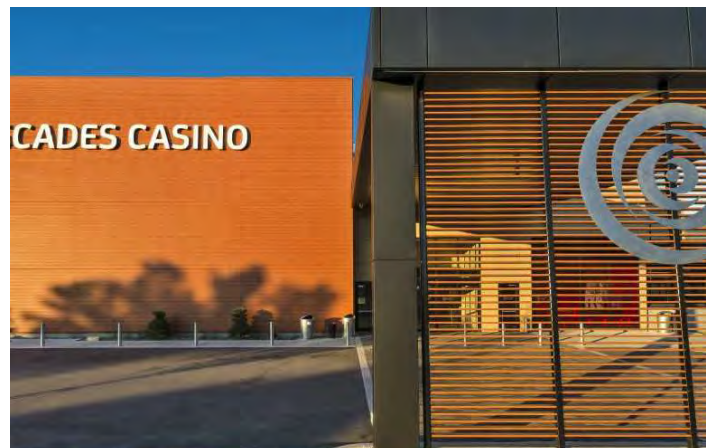
Woodgrains, solid color, naturally aged metal, custom solid color matching (additional lead times apply)

BIM & CAD

RVT & DWG files available, see website for details

Rain Screen Solutions

Our Privacy Screen System can be used as an open joint cladding rainscreen when installed in a floating configuration. The system uses single posts that are designed to be installed behind the beams anchoring the system to the sub-structure providing a continuous and seamless look. Spacing for the floating system is created with mounting brackets and spacer bars.



Privacy Beams



Size	Product	24'	End Caps (20/box)
1"x 3"	Privacy Beam	1X3B.289	1BEC.3
1"x 5"	Privacy Beam	1X5B.289	1BEC.5
2"x 2"	Privacy Post - Single	2X2SP.289	2X2PC.2
2"x 3"	Privacy Post - Double	2X3DP.289	2X3PC.3

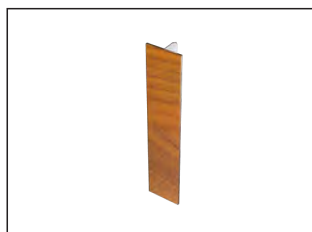
Mounting Accessories	Qty	SKU
Spacer Block	100/ box	2X2SB.N100
1" Spacer Bar Stock Length	1	1X2FB.145
1"x 3" Spacer Bar	100/ box	1X2FB.1
1"x 5" Spacer Bar	100/ box	1X2FB.3
3" Mounting Bracket	100/ box	3PSMB.1
#10 Black Screws	100/ box	PECS.N100

Components



1"x3" End Cap

Qty: 20/ Box
SKU: 1BEC.3



1"x5" End Cap

Qty: 20/ Box
SKU: 1BEC.5



Single Post End Cap

Qty: 20/ Box
SKU: 2X2PC.2



Double Post End Cap

Qty: 20/ Box
SKU: 2X3PC.3



2" x 2" Privacy Post - Single

Dimensions: 24'
SKU: 2X2SP.289



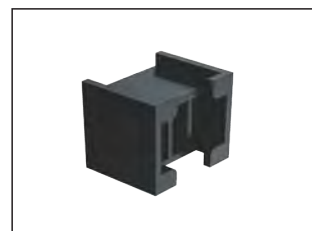
2" x 3" Privacy Post - Double

Dimensions: 24'
SKU: 2X3SP.289



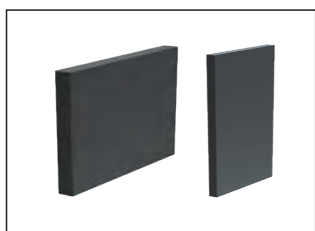
3" Privacy Beam Mounting Bracket

Qty: 100/ Box
SKU: 3PSMB.1



1" x 3" & 1"x5" Spacer Block

Qty: 100/ Box
SKU: 2X2SB.N100



1" x 3" & 1"x 5" Spacer Bar

Dimesions: 12'
SKU: 1X2FB.145



1" x 3" Spacer Bar

Qty: 100/ Box, Precut at 1"
SKU: 1X2FB.1



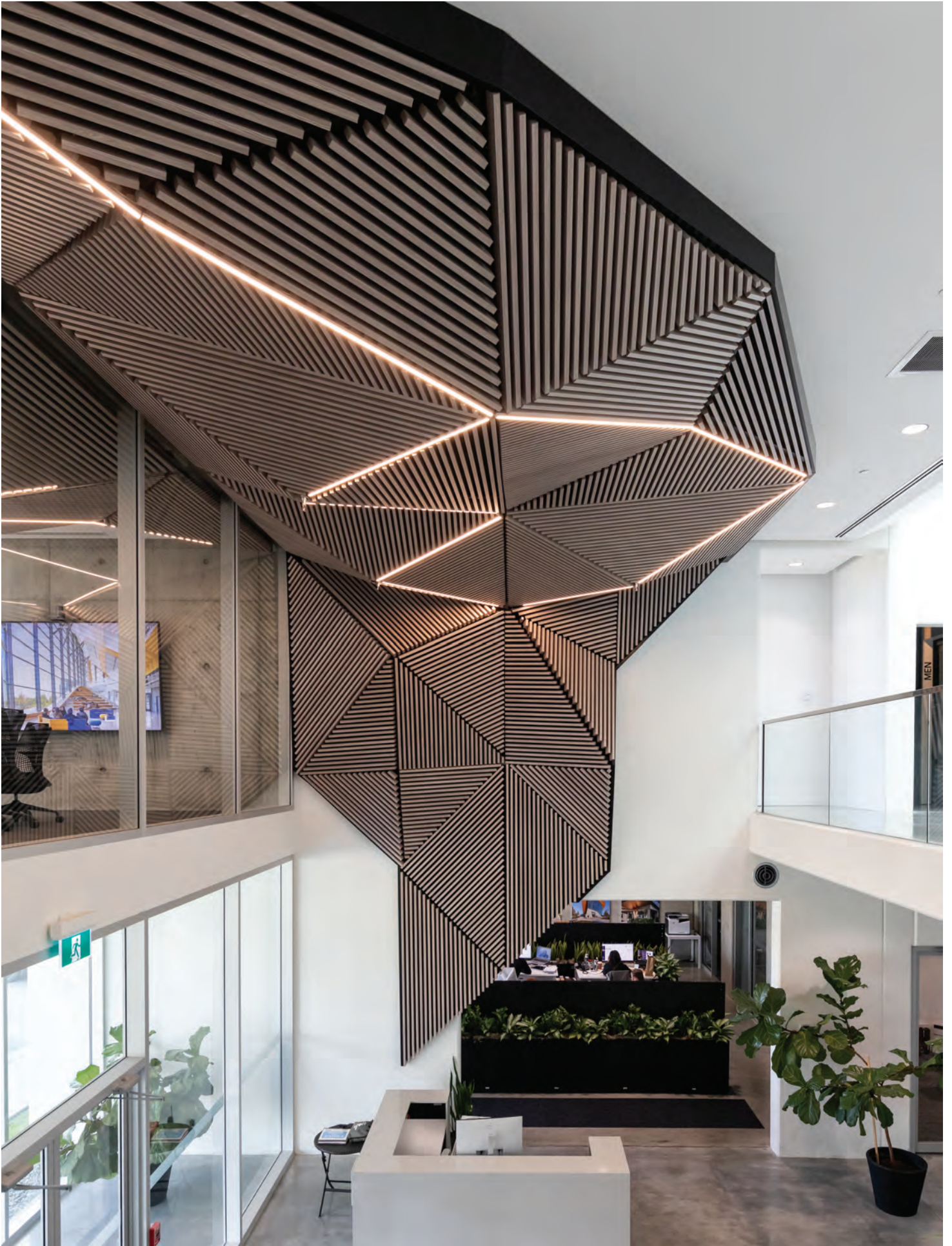
1" x 5" Spacer Bar

Qty: 100/ Box, Precut at 1"
SKU: 1X2FB.3



10 Black Screws

Qty: 100/ Box
SKU: PECS.N100



Privacy Beams





DAUNTLESS

SUSPENDED CEILING SYSTEM

PROJECT

Equinox

COLOR

Sand Drift

PRODUCT

6" Dauntless Beam

SECTOR

Commercial

Often overlooked, ceilings play a vital role in various settings such as schools, hospitals, and hotels. Technological advancements have revolutionized the construction of ceilings, enabling easy access to overhead mechanical systems. Additionally, their acoustic benefits effectively reduce ambient noise while improving energy efficiency.



PROJECT
Ebata Optometry

PRODUCT
4" Dauntless

COLOR
Light Bamboo

SECTOR
Commercial

Dauntless Suspended Ceilings

Applications

Interior: Ceilings - Dauntless Align & Dauntless Curve



Longboard® provides ceiling, wall, and privacy systems that contribute to improved indoor air quality and well being. Improve comfort, save installation time, enhancing building efficiency, and create aesthetically pleasing spaces. Our goal is to develop cutting-edge and sustainable indoor solutions that add value to buildings with their design and performance.



Our Dauntless system offers a unique open joint appearance while at the same time being incredibly easy to install and service.

The clip and rail system we have developed makes install a snap. Dauntless ceiling systems are built for adaptability and creative install. Design either a linear look using our Align documentation or Curve for geometric variations. Like all open cell ceiling systems, our Dauntless system allows for the use of acoustic batts for improved sound performance. Explore the possibilities with the freedom to create a visually stunning space with a product that also serves a practical purpose.

Technical Specifications


Physical Data

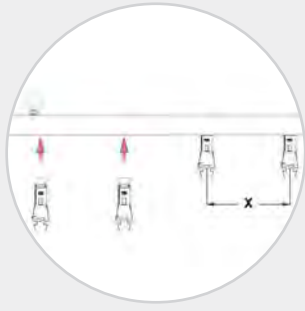
6063-T5 Extruded Aluminum
100% Recyclable
Warranty: Finish: 15 year (standard)/20 year* (ultra)
(*10 week lead time)
Aluminum: 50 year
Weight (lbs/lf): 1.3 (4"); 1.6 (6")

-  Fire Rating: Class A Non-Combustible by ASTM E136 & ASTM E84 A2-s1,d0 by EN 13501-1
-  Light reflectance (LRV): 5% (Black) Up to 73.2% (Ultra White)

Testing

ICC-ES Evaluation Report - Division: 05 00 00 - METALS
Section: 05 50 00 - Metal Fabrications
CAN/ULC S102
CAN/ULC S114
LARR - Los Angeles Department of Building Safety (LADBS) accepts ICC-ES reports as proof of compliance
Florida Product Code: FL20075WUI (The Wildland-Urban Interface) -
California Department of Forestry & Fire
Protection Office of the State Fire Marshal Listing No. 8140-2286:0500

-  Acoustical Rating with insulation: NRC up to 0.79



Profiles

1-5/8" X 4" & 6" - Standard Lengths: 24'

Components

1-1/2" Rail - Standard Lengths:
24'Hanger, Baffle End Cap,
Baffle Spline -Units (1pc)



Attachment

Rail spacings to be calculated by design team to suit layout and project requirements, suspended from structure above (by others)*refer to submittal package for load calculation data
1-1/2" Rail - Standard Lengths: 24'Hanger, Baffle



Finishes

Woodgrains, solid color, naturally aged metal, custom solid color matching (additional lead times apply)

BIM & CAD

RVT & DWG files available, see website for details

Acoustic Solutions

Like all open cell ceiling systems, our Dauntless system allows for the use of acoustic batts for improved sound performance. Explore the possibilities with the freedom to create a visually stunning space with a product that also serves a practical purpose.

We offer perforation options to offer designers freedom in achieving their desired look while also delivering acoustically enhancing capabilities. These products meet the same quality and environmental benchmarks of our other products, including being VOC free, LBC red list free, 100% recyclable, and offering up to LR.73 light reflectance. Through independent testing we have been able to achieve NRC ratings of between 0.7 and 0.8 that verifies our new perforated ceiling systems will reduce reverberation and achieve sound absorption needs.



Dauntless Ceiling System

Beams

Dimensions	Product	12'	24'	End Caps (20/box)
1-5/8" x 4"	Beam	2X4CB.145	2X4CB.289	2BEC.4
1-5/8" x 6"	Beam	2X6B.145	2X6CB.289	2BEC.6

Clip Mounting System

Product	Kind	Qty	SKU
Single Rail	24' Carrier Rail	1	CBR.289
Double Rail	24' Carrier Rail	1	CBDR.289
1-1/2" Single Hanger Clip	Clip	20 / box	HCS.2
3" Hanger Clip	Clip	20 / box	HC.3
Eye Bolt with T-Nuts	Attachment	20 / box	CBEB.N20

Includes 7 Eye-Bolts with T-Nuts

Hanger Bracket Mounting System

Product	Kind	Qty	SKU
Side Rail	24' Carrier Rail	1	2CBSR.289
Beam Spline Connection Top	Accessory	1	BSCT.6
2" Hanger Bracket	Bracket	1	CBHB.2
4" Hanger Bracket	Bracket	1	CBHB.4
6" Hanger Bracket	Bracket	1	CBHB.6
8" Hanger Bracket	Bracket	1	CBHB.8
10" Hanger Bracket	Bracket	1	CBHB.10
12" Hanger Bracket	Bracket	1	CBHB.12



Hanger Clip Assembly



Hanger Bracket Assembly



Touch-up Pen



End Caps

Components



4" Beam

Dimensions: 1-5/8" x 4"
SKU: 2X4CB.145



6" Beam

Dimensions: 1-5/8 x 6"
SKU: 2X6B.145



Hanger Bracket

Dimensions: 2"-12"
SKU: CBHB.4/6/8/10/12



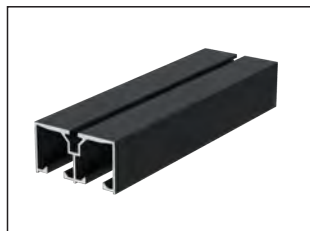
Hanger Clip

Qty: 1-1/2" - 3"
SKU: HCS.2 / HC.3



Single Carrier Rail

Dimensions: 24'
SKU: CBR.289



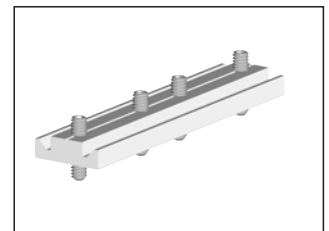
Double Carrier Rail

Dimensions: 24'
SKU: CBDR.289



Side Carrier Rail

Dimensions: 24'
SKU: 2CBSR.289



Beam Spline

Qty: 1
SKU: BSCT.5







HITCH™

CLADDING ATTACHMENT SYSTEM

PROJECT

Montana Museum of Arts & Culture

COLOR

Birchwood

PRODUCT

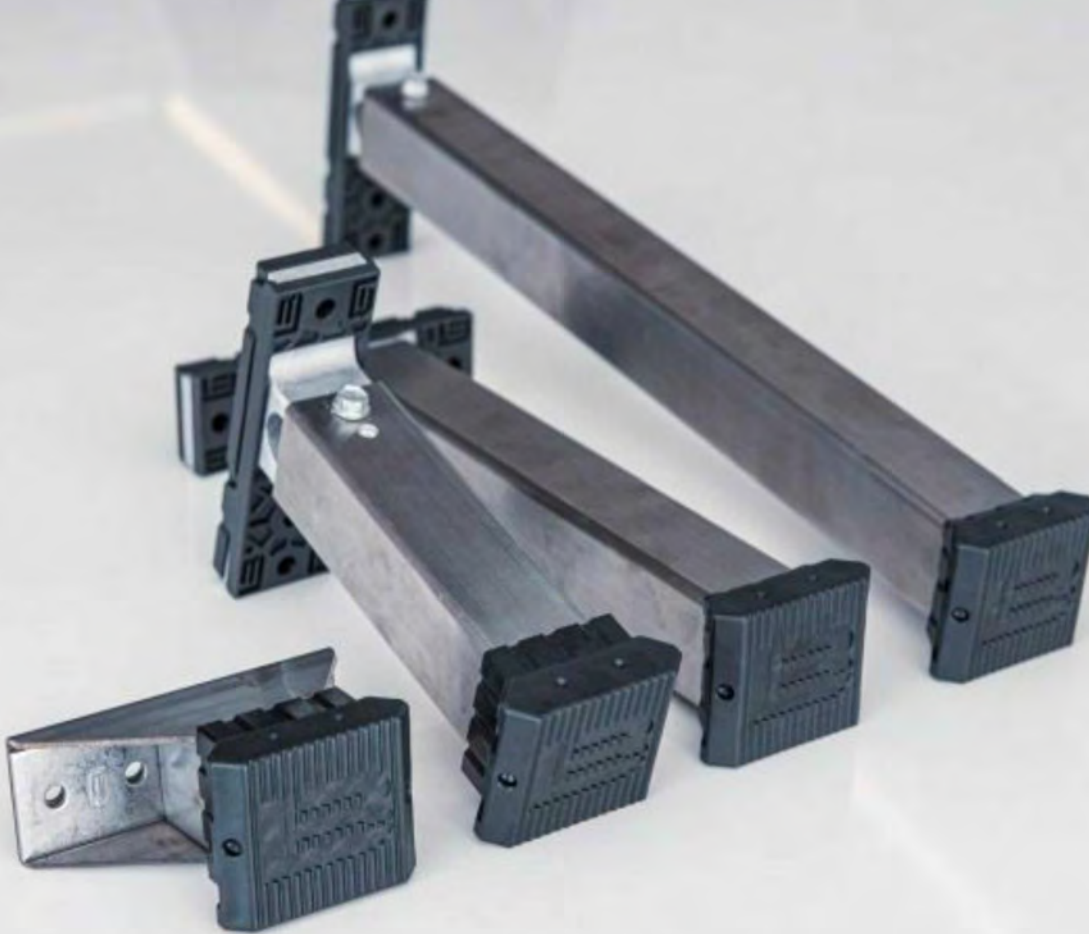
Hitch™, 6" Link & Lock™, 6" Smooth Plank

SECTOR

Civic

The HITCH™ cladding attachment system, is certified by PHI as an Advanced Component Façade Anchor, it supports various cladding types with incredible capacity and thermal efficiency. Its use of premium materials like galvalume steel ensures durability, reduced costs, faster installation time, and superior thermal performance compared to other certified anchors.

MTANA MUSEUM OF ART AND CULTURE



HITCH™ SD, HD & HD+

High tensile aluminum, stainless & galvalume steel for improved structural performance

Supports vertical and horizontal girt designs, & one- or two-layer girt assemblies

Accommodates continuous exterior insulation between 1" – 16" thick for >R60 walls

HITCH™

Pat. 11913234. Pat. 11933053

A revolutionary system for rear ventilated facades



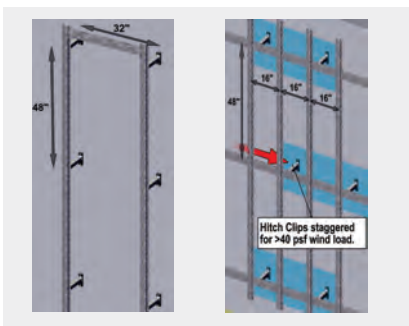
Our Hitch™ cladding attachment system is a patented modular building product for rain screen and exterior wall assemblies offering a thermally broken and intermittent structural solution. Hitch™ is unparalleled when it comes to structural capacity, flexibility, and thermal performance. Building codes and high-performance energy standards like Passive House and Net-Zero are evolving to meet multiple objectives, including reducing energy consumption and reducing greenhouse gas emissions.

The most efficient methods of insulating a building's exterior walls are those that incorporate the principals of continuous exterior insulation with no or minimal thermal bridging to limit thermal loss. Hitch™ can achieve effective R-values exceeding R60 for various types of wall assemblies while supporting heavy cladding loads in high wind load and seismic conditions. The Hitch™ system can accommodate continuous exterior insulation thicknesses between 1" and 16" and is therefore suitable for use in all Passive House and ASHRAE climate zones across North America.

Substructure Design Options

Single Layer Girts

Dual Layer Girts



Hitch™ Clip Spacing Consistent, to maintain Thermal Efficiency

Single Layer Girts

Wind Load < 40 PSF using Long board Planks

Horizontal Cladding Install

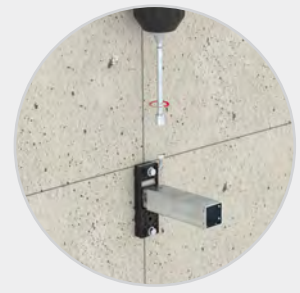
Girts Installed Vertically

Dual Layer Girts

Wind Load > 40 PSF using Long board Planks

Horizontal Cladding Install

First Layer girts installed vertically and Second Layer Girts Installed Horizontally



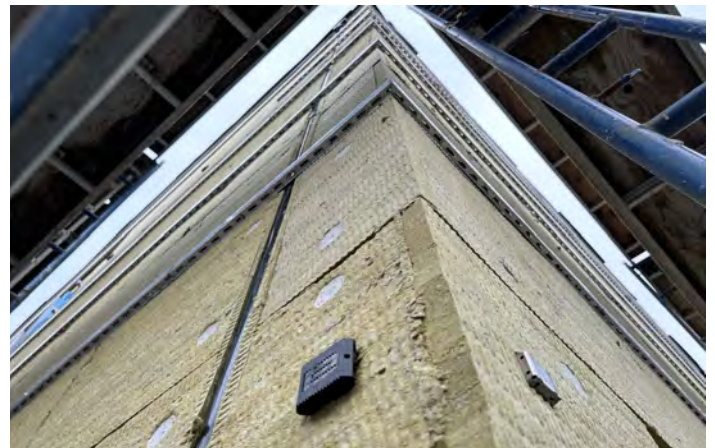
- Premium system, durably designed & constructed for a service life of over 50yrs
- High tensile aluminum, stainless & galvalume steel for improved performance
- Supports vertical and horizontal girt designs
- Supports one- or two-layer girt assemblies
- Fully engineered and independently verified by RDH Building Science Inc.
- High structural capacity system for heavy cladding loads up to 15psf under high wind load conditions up to 120psf
- Certified by the Passive House Institute

- Modular & adaptable system
- Accommodates continuous exterior insulation between 1" – 16" thick for >R60 walls
- Telescopically adjustable up to 1"
- Thermally broken attachment system with high thermal efficiency of more than 90%
- Proprietary piercing technology for fast and effective insulation installation
- Cost effective system that is quick & easy to install
- Designed to be used on various types of building structures including masonry, concrete, wood and steel stud

Passive House Component

Passive House is a building standard developed by the Passive House Institute (PHI) in Germany which is recognized internationally as the optimal way to build healthy, climate-resilient, and energy-efficient. Passive House compliant buildings allow for space heating and cooling related energy savings of up to 90% compared to conventional buildings and over 75% compared to average new builds.

This is achieved by means of highly efficient building systems, careful planning, and use of Passive House certified building components. As an independent authority, the PHI tests and certifies components in respect of their suitability for use in Passive Houses which are normally two to three times more efficient.



Hitch™ Cladding Attachment System

Please note, clip SKUs and order information are non-exhaustive and for illustrative purposes only. Sample clip sizes are presented that would accommodate a certain exterior insulation thickness. Always consult the Hitch calculator and Longboard technical representatives to verify clip order information.

Hitch™ SD

Insulation Thickness	SKU
1"	HITCH.SD.15
1 ½"	HITCH.SD.20
2"	HITCH.SD.25
2 ½"	HITCH.SD.30

Hitch™ HD

Insulation Thickness	SKU
3"	HITCH.HD.22
4"	HITCH.HD.32
6"	HITCH.HD.52
8"	HITCH.HD.72
10"	HITCH.HD.92
16"	HITCH.HD.152

Hitch™ HD +

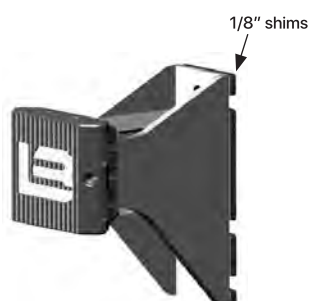
Insulation Thickness	SKU
6"	HITCH.HDP.47
8"	HITCH.HDP.67
10"	HITCH.HDP.87
12"	HITCH.HDP.107
14"	HITCH.HDP.127
16"	HITCH.HDP.147

Installation Accessories

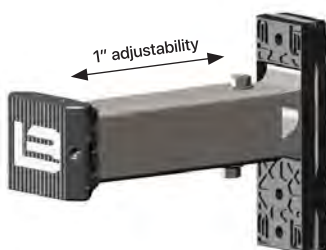
Product	Qty	SKU
Girt Adapter	1	HITCH.GRTADPTR
Girt Connector	1	HITCH.GRTCNCNTR
Insulation Piercing Tool	1	HITCH.PRCNGTL
Insulation Plunger Tool	1	HITCH.PLNGRTL
Insulation Piercing Kit	1	HITCH.INSULKIT
SD Thermal Base Shims	48 / Bag	SDTHBSHM.N48
1/16" U-SHIM	250 / Bag	SHIM.1001

Girts

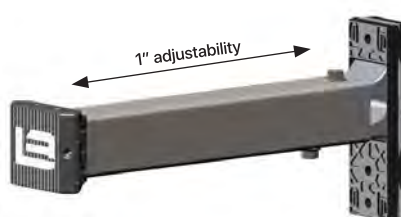
Depth	Type	72"	96"	120"	144"	192"
¾"	Standard	-	HITCH.75STDGRT.96	HITCH.75STDGRT.120	HITCH.75STDGRT.144	HITCH.75STDGRT.192
¾"	Edge	-	HITCH.75EDGGRT.96	HITCH.75EDGGRT.120	HITCH.75EDGGRT.144	HITCH.75EDGGRT.192
¾"	Corner	HITCH.75CRNGRT.72	-	-	-	-
¾"	Corner Edge	HITCH.75CRNEDGGRT.72	-	-	-	-
1"	Standard	-	HITCH.1STDGRT.96	HITCH.1STDGRT.120	HITCH.1STDGRT.144	HITCH.1STDGRT.192
1"	Edge	-	HITCH.1EDGGRT.96	HITCH.1EDGGRT.120	HITCH.1EDGGRT.144	HITCH.1EDGGRT.192
1"	Corner	HITCH.1CRNGRT.72	-	-	-	-
1"	Corner Edge	HITCH.1CRNEDGGRT.72	-	-	-	-



Hitch™ SD



Hitch™ HD



Hitch™ HD+



Standard Girt



Edge Girt



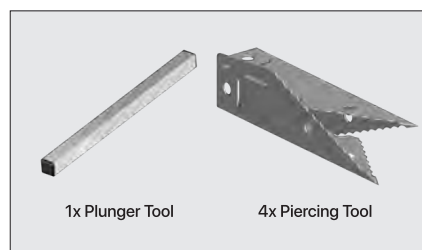
U-Shim



Girt Adapter



Girt Connector



Insulation Piercing Kit



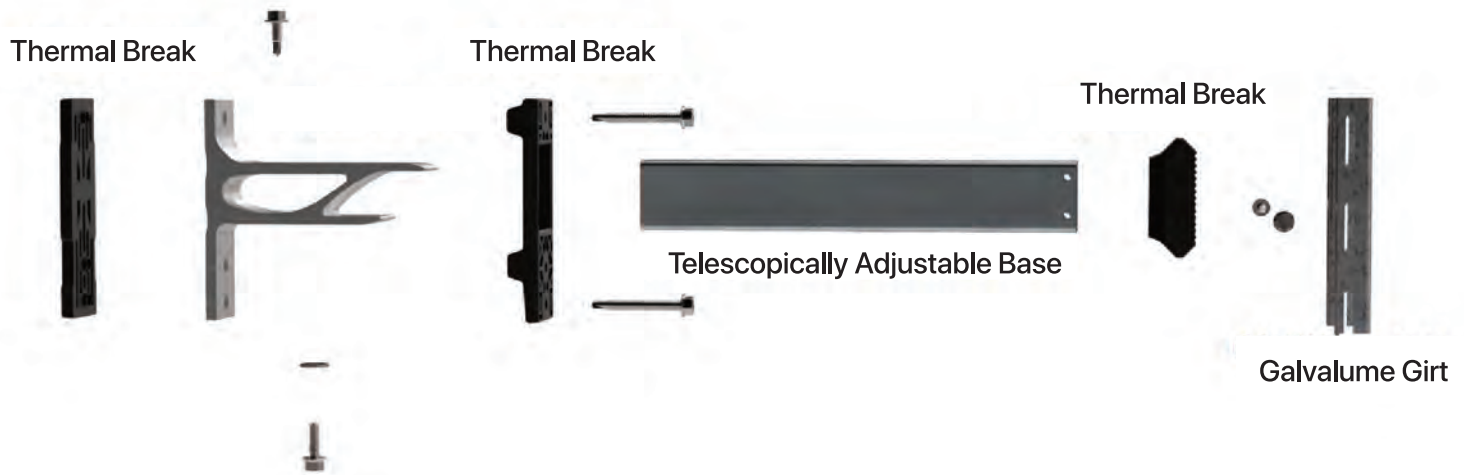
Corner Girt



Corner Edge Girt

How HITCH™ Reduces Thermal Bridges

The HITCH™ system was designed with integrated thermal breaks at the head and the foot of the system. These are primarily designed to reduce the thermal energy transfer into the substructure or building. At standard spacing of 32" by 48", the HITCH™ clip & girt system achieves up to 94% thermal efficiency. This is made possible by the combination of high performance isolators and materials, reducing surface contact, reducing the transfer pass for energy and creating dissimilar contact interactions.



Building codes and energy standards like Passive House are evolving to meet objectives of reducing energy consumption and greenhouse gas emissions. Developed by the Passive House Institute in Germany, Passive House is recognized internationally for building healthy, climate-resilient, and energy-efficient structures. These buildings achieve up to 90% energy savings in heating and cooling through efficient systems and certified components. The PHI tests and certifies products, providing efficiency classes to distinguish highly energy-efficient options.

Cladding attachment systems are essential for meeting Passive House energy efficiency standards. These systems reduce thermal bridging, support exterior insulation, and simultaneously minimize the total number of penetrations into the building envelope. They provide design flexibility and secure support for various cladding materials, including metal panels, fiber cement, and terracotta. Systems like HITCH™, minimize heat loss and maximize energy efficiency through effective thermal breaks. With a combination of proper insulation thickness and installation, cladding attachment systems contribute to sustainable and fire-safe building designs.





OUR FINISHES

Longboard has been applying high performance powder coating and sublimation finishes to extruded aluminum products for nearly 20 years. Powder coating is a solvent-free (volatile organic compounds or VOC's) dry powder and as a class of coating generally is considered an environmentally friendly and high-performance finish, particularly in respect to its outstanding toughness and durability. Producing quality painted material is largely dependent on the process used for cleaning the metals, and the chemicals used historically have been chrome or phosphate based.

These standards measure the coating performance based on a variety of factors including:

- Color uniformity and gloss
 - Coating thickness and hardness.
 - Adhesion of the coating to the metal substrate.
 - Impact, abrasion and chemical resistance.
 - Humidity and salt spray corrosion resistance.
 - Weathering resistance with regards to color and gloss retention
 - erosion resistance and chalk resistance.
-

If a custom finish is required, we will work with our industry leading coating suppliers to develop a custom finish solution.

Woodgrains

Longboard's woodgrain finishes have a slight texture with matte sheen.



Black Oak



Burnt Cherry



Italian
Rosewood



Dark Olive



Light Olive



Dark Walnut



Dark National
Walnut



Light National
Walnut



Table Walnut



Dark Antique
Oak



National
Mahogany



Western Cedar



Dark Cherry



Dark Acacia



Dark Bamboo



Dark Knotty
Pine



Light Bamboo



Dark Fir



Light Cherry



Light Fir



Light Oak



Southern
Yellow Pine



Rock Elm



Birchwood



Blonde Oak



Beechwood



Grey Hemlock



Driftwood



Grey Douglas
Fir



White Oak

Solid & Specialty



Onyx Black
Textured Matte
Solid



Dark Brown
Smooth Satin
Solid



Classic Bronze
Smooth Satin
Solid



Imperial Slate
Textured Matte
Solid



Slate Grey
Smooth Satin
Solid



Shale
Textured Matte
Solid



Venus
Smooth Satin
Metallic



Bone White
Smooth Satin
Solid



Ultra White
Smooth Satin
Solid



Moonstone
Smooth Satin
Metallic



Medium Blue
Smooth Satin
Solid



Chilli Pepper
Smooth Satin
Solid



Copper Penny
Smooth Satin
Metallic

Speckle



Brownstone	Baked Clay	Burnt Sienna	Biscotti	Relic Stone	Limestone	Bedrock	Pebble	Alabaster	Portland Stone
Textured Matte Speckle	Textured Matte Speckle	Smooth Matte Speckle	Smooth Matte Speckle	Textured Matte Speckle	Textured Matte Speckle	Textured Matte Speckle	Textured Matte Speckle	Textured Matte Speckle	Textured Matte Speckle

Naturally Aged Metals



Liberty	Brooklyn	Eiffel	Empire	Golden Gate
Textured Matte Naturally Aged Metal	Smooth Glossy Naturally Aged Metal	Textured Matte Naturally Aged Metal	Textured Matte Naturally Aged Metal	Textured Matte Naturally Aged Metal



**Our finishes have varying lead times
Please check our website for details**

Most Popular Finishes
(Ready to ship within 1 week for orders less than 15k sq.ft)
Additional Finishes
(Contact a Sales Rep for Lead Times)

Achieve your vision.

If a custom finish is required, we will work with our industry leading coating suppliers to develop a custom finish solution. All finishes are rigorously tested for corrosion and weathering resistance to ensure that it will stand up and deliver superior performance in the built environment.

We perform accelerated weathering testing in our onsite laboratory and work closely with coating suppliers to review weathering results of finishes undergoing natural Florida exposure testing.

Our disciplined approach to powder coating, quality and process control distinguishes it as industry leading product manufacturer and ensures that its premium products stay looking beautiful for many, many years.

The pre-treatment chemicals used by Longboard contain no chromates, cyanides, phosphates or other metals listed by the EPA or the OSHA.

SAMPLE BARS

Print, Screens, and our pictures do not accurately reflect aspects of our finishes – textures, sheen, woodgrain hues, etc.

Always order a physical sample before purchase!

Our Color Bars swatches and samples will provide an accurate representation.

Longboard Finish Classification

Type: Woodgrain / Solid / Metallic / Speckle & Naturally Aged Metal
Surface: Smooth / Textured
Sheen: Matte / Satin / Glossy
Performance: AAMA 2604 / AAMA 2605
Finish Warranty: 15 Year / 20 Year



PROJECT
Makers Mark Distillery

PRODUCT
6" V-Groove Custom Facade

COLOR
Dark Brown, Classic Bronze,
Slate Grey, Black

SECTOR
Commercial Manufacturing

Testing & Certification

ISO 14001:2015 Proof has been furnished by means of an audit that the requirements of ISO 9001:2015 are met	ISO 14001:2015 Proof has been furnished by means of an audit that the requirements of ISO 14001:2015 are met	Declare. LBC Red List Free - T&G, Endura, Link & Lock™, Intrepid, Dauntless, Panelboard™, HITCH™	NFPA 285 Evaluates flame propagation of exterior wall assemblies
NRC Acoustical testing NRC can be achieved with Longboard systems that utilize openings in various forms like perforations, reveals, or grooves.	ICC ESR 4182 / 4183/ 4184 Document for compliance of code approvals and testing certifications.	BS EN ISO 1716 Specifies a method for the determination of the gross heat of combustion of products.	EXAP report Extended application report showing compliance of similar product lines.
Combustibility Products are tested to meet or exceed CAN/ULC S114 / ASTM E136 non-combustibility standards.	EK/EU Fire rating Products are tested to meet or exceed EN 13501-1 standards to achieve class A2-S1, D0 fire ratings.	Flame spread Products are tested to meet or exceed ASTM E2768-11 and ASTM E84 and achieve class 1 fire ratings.	Wildland-Urban Interface WUI, California.
Florida Product Code FL 41934, FL 41776, FL 41842, FL 42008	Miami Dade NOA No. 22-0209.01 Exp. Date: January 26, 2028.	AAMA 509-9 Certified rainscreen V2/W1.	EPD Product Specific EPD's available.

Sustainability

Our Comittment

We are committed to helping the building design and construction industry become more sustainable. To achieve this, we contribute and participate in programs such as the Energy Step Code, LEED®, and Passive House to help create energy-efficient, low-carbon, and sustainable buildings.

All Longboard products are 100% recyclable, VOC and LBC Red List free, made using a chrome-free pre-treatment, and manufactured using hydroelectric power. Our water filtration system ensures that any water used in the manufacturing and pre-treatment process is returned clean to the environment.

Building with Aluminum

Longboard manufactures most of its products using architectural grade extruded aluminum. Aluminum is a versatile and sustainable building material that is 100% and infinitely recyclable making it one of the few materials on earth that can support a circular economy. It is the third most abundant element after oxygen and silicon and the most abundant metal on earth.

Our Promise

We will ensure our Environmental Management System (EMS) delivers according to the existing local and international standards. We will continuously monitor and seek to improve our environmental performance by regularly reviewing our policy and its impact on the environment.

Our Longboard ECO™ suite of products contain at least 50% recycled aluminum. Manufacturing these products results in less greenhouse gas emissions and generates less than 50% of industry average embodied carbon. These products meet the same strict quality benchmarks as our standard line of products, are offered with the same robust warranties, and possess verified life cycle impact analysis (LCIA) and environmental product declarations (EPD).



PROJECT
Humber College Barrett Centre for Technology

PRODUCT
6" V Groove

COLOR
Light Oak

SECTOR
Education



PROJECT
Alberni by Keno Kugumi

PRODUCT
Custom Extrusion

COLOR
Custom Color

SECTOR
Residential Multi Family

The Longboard Difference

By embracing our 3 Core Pillars – **Innovation, Sustainability, and Quality** – and the differentiators that set us apart, we make socially and environmentally responsible decisions, helping the design and construction community bring their visions to light.

Inspiring Architecture is the End Goal!

At Longboard®, we craft premium building products designed to elevate the built environment with enduring beauty and performance. Backed by skilled experts, cutting-edge equipment, and meticulous process control, we ensure every product meets the highest standards of quality and precision.

Our Formula for Lasting Impact:

Inspiring Architecture = Thoughtful Design + Premium Products + Quality Workmanship

- We Own the Production Process - We don't outsource any of our manufacturing, extrusion, powder coating or finishing, allowing us to control the Quality & Supply.
- Our Products are Ready to Ship - We produce most orders in our Teir 1 category
- (most popular finishes) within 1 week and have secured raw materials to meet large orders.
- Our main products come in longer lengths at 24 ft
- We offer a vibrant spectrum of over 50 colors in Woodgrain, Solid colours, Naturally aged metals & Speckle finishes
- Our Pinnacle warranty offers a 15 to 20-Year Finish Warranty - At Longboard, we understand the importance of durability, longevity, and peace of mind when it comes to your investment. Longboard's relentless focus on quality and durability ensures your project continues to impress decades later.
- A wide range of products for interior and exterior applications with full testing documentation, BIM library and live technical support
- Products designed for simple, efficient installation & Rapid sample fulfilment.
- We are committed to helping the building design and construction industry become more sustainable. To achieve this, we contribute and participate in programs such as the Energy Step Code, LEED®, and Passive House to help create energy-efficient, low-carbon, and sustainable buildings. All Longboard products are 100% recyclable, VOC and LBC Red List free, made using a chrome-free pre-treatment, and manufactured using hydroelectric power.

*****The Pinnacle Warranty applies to all products except Longboard Lap Siding and Board & Batten, which carry the Core Warranty.



Design Assist Services *Your Designs, Our Solutions*

At Longboard, we value true partnerships. We know that inspiring architecture is unique by design and isn't always presented with an out-of-the-box solution. Your projects come in remarkably beautiful forms of all shapes, styles, and colors, so the products you use should emphasize these qualities. Being devoted to the art of design and product development ourselves, we truly understand the concept that ideas start out as fragile, barely formed thoughts, but that they ultimately can become extremely powerful energy forces in life! That's why Longboard is dedicated to work with you in finding creative and innovative solutions to accommodate your unparalleled designs.

We combine the beauty of wood and specialty building product finishes with the durability and longevity of extruded aluminum. With industry-dominating lead times, commitment to radical client care, and ever-evolving product lines, we are devoted to finding the solution that match your needs. If we don't have a standard offering that works for you, let's work together to create something that will. As a building product manufacturer with its own in-house engineering and product design team, that owns its entire manufacturing process and that also understand the buildings sciences, it truly makes us the design assist partner of choice. We can offer various custom solutions ranging from custom aluminum extrusions, unique powder coating finishes, value added processing using our CNC metal fabrication capabilities, prefabrication, and modular design solutions. *Contact us to explore your unique ideas together.*



[illegible]



PROJECT
Holiday Farms

PRODUCT
6" V Groove

COLOR
Light Cherry

SECTOR
Retail



LONGBOARD[®]
INSPIRING ARCHITECTURE

+1 800 604 0343

longboardproducts.com • info@longboardproducts.com